

ARC MN

Slim block with and without ball chain. ARC55MN is without ball chain.

For high load applications or any application where severe chock-loads may occur, the standard version offers better safety margins by its higher static limit (C0). For light to medium loads where a very long lifetime is required, the ball-cage will show superior life span and reliability.

Please note that ball chain versions must never be used for linear speeds exceeding 3 m/s!

Size 15 delivered with straight standard nipple.
Size 20 – 55 delivered with angled standard nipple.

Lubrications injections ports on the block:

N1: Front of the block. All blocks are delivered with front mounted standard grease nipple.

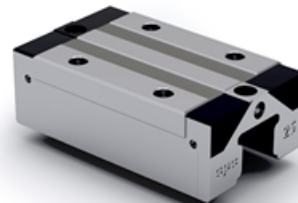
N2: Side of the block. The side lubrication injection port is sealed on delivery to prevent leakage of lubrication.

N3: Top of the block with an O-ring seal. The top lubrication injection port is sealed on delivery to prevent leakage of lubrication.

Dimensions in mm.

Lead times in the table below are only indications. Choice of preload, accuracy class and other options will affect lead time. Please contact us for exact delivery time for your request.

For more information about calculation of life, load rating and static moment see Technical information.



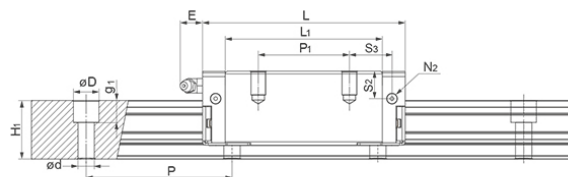
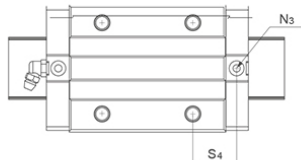
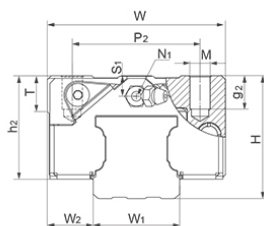
General Data



Designation	Remark	Dynamic Load Capacity C (N)	Static Load Capacity C ₀ (N)	Static Moment M _{p0} (Nm)	Static Moment M _{r0} (Nm)
ARC15MN	-	9900	17500	105	140
ARC20MN	-	17100	30000	230	325
ARC25MN	-	24800	42500	385	540
ARC30MN	-	32800	53700	565	845
ARC35MN	-	45900	82900	1080	1700
ARC45MN	-	71300	122100	1910	3200
ARC55MN	No ball chain	128000	186000	3278	4949

Designation	Static Moment M _{y0} (Nm)	Dynamic Moment M _r (Nm)	Dynamic Moment M _p (Nm)	Dynamic Moment M _y (Nm)	Weight Block (g)
ARC15MN	105	79	59	59	158
ARC20MN	230	185	131	131	266
ARC25MN	385	315	225	225	420
ARC30MN	565	516	345	345	800
ARC35MN	1080	941	598	598	1120
ARC45MN	1910	1869	1115	1115	2120
ARC55MN	3278	3406	2256	2256	4200

Dimensions



**E: Size 15 delivered with straight standard nipple.
Size 20 – 55 delivered with angled standard nipple.

Designation	L	H	W	L1	H1	h2	W1	W2	S1
ARC15MN	55.5	24	34	40.3	15	20.7	15	9.5	4.5
ARC20MN	69	28	42	52	20	23	20	11	4
ARC25MN	81.2	33	48	62.2	23	27	23	12.5	5
ARC30MN	95.5	42	60	71.5	27	35.2	28	16	7.5
ARC35MN	111.2	48	70	86.2	32	40.4	34	18	8
ARC45MN	135.5	60	86	102.5	39	50.7	45	20.5	11.1
ARC55MN	168.5	70	100	126.5	45.7	58	53	23.5	13.5

Designation	S2	S3	S4	E	T	N1	N2	N3	M x g2	D x d x g1
ARC15MN	7.5	9.8	10.9	5.3	6	M3x6.5	M3x6	P3	M4x7	7.5 x 4.5 x 5.3
ARC20MN	7.4	13	13.7	10	8	M3x7.5	M3x5.5	P4	M5x7	9.5 x 6 x 8.5
ARC25MN	9.3	16.6	17.6	12	8	M6x7.5	M3x6.5	P4	M6x9	11 x 7 x 9
ARC30MN	12	20.8	20.5	12	12	M6x8.5	M6x5	P5	M8x10	14 x 9 x 12
ARC35MN	15	23.4	24.1	12	14	M6x10	M6x7	P5	M8x13	14 x 9 x 12
ARC45MN	18.1	27.3	27.2	14	14	PTI/8x12.5	M6x10.5	P5	M10x17	20 x 14 x 17
ARC55MN	23.5	34.8	33.8	12	16	M6x10	M6x13	P5	M12x20	24 x 16 x 20

Designation	P1	P2	Hole Pitch (P)
ARC15MN	26	26	60
ARC20MN	32	32	60
ARC25MN	35	35	60
ARC30MN	40	40	80
ARC35MN	50	50	80
ARC45MN	60	60	105
ARC55MN	75	75	120