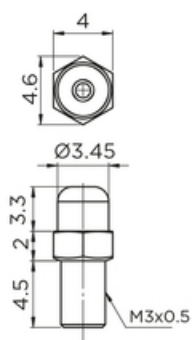


## Standard grease nipple

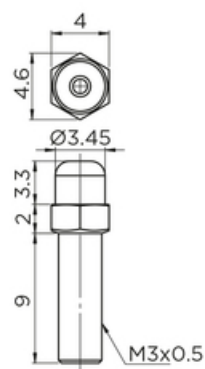
When external NBR seal is chosen (SN), please use long type grease nipple.



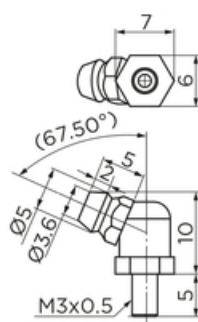
**A-M3**



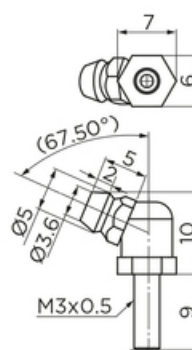
**A-M3-L**



**B-M3**

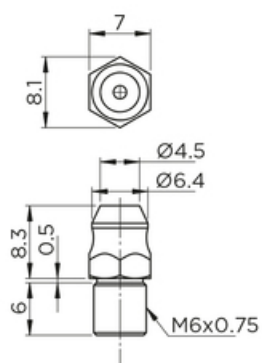


**B-M3-L**

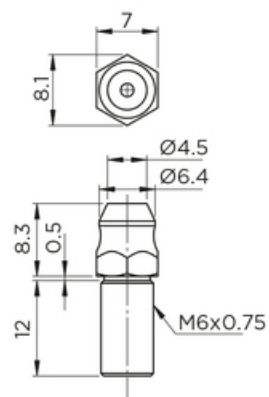


## Standard grease nipple

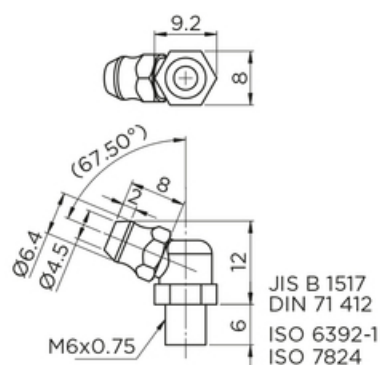
**A-M6**



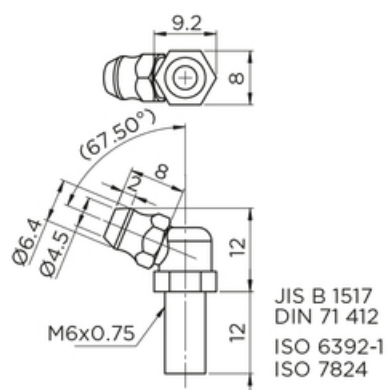
**A-M6-L**



**B-M6**

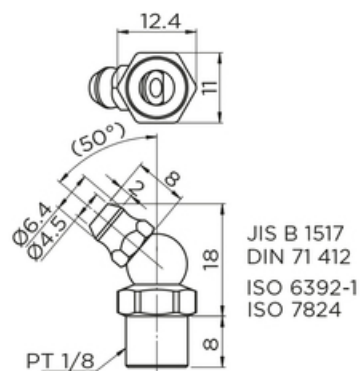


**B-M6-L**

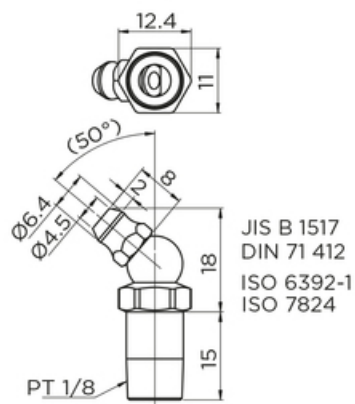


## Standard grease nipple

**B-PT1/8**



**B-PT1/8-L**



**Port sizes for grease nipple**

Type	Port size		Top o-ring size
	Front	Side	
HRC/ARC 15	M3	M3	P3
HRC/ARC 20	M3	M3	P4
HRC/ARC/ERC 25	M6	M3	P4
HRC/ARC 30	M6	M6	P5
HRC/ARC 35	M6	M6	P5
HRC/ARC 45	PT1/8	M6	P5
HRC/ARC 55	M6	M6	P5
WRC 21/15	M3	M3	P3
WRC 27/20	M3	M3	P4

## General Data

Designation	Compatible with	Remark	Thread	Type
<b>A-M3</b>	Block size 15	-	M3x0.5	Normal
<b>A-M3-L</b>	Block size 15	For block with external seal (SN)	M3x0.5	Normal
<b>B-M3</b>	Block size 20	-	M3x0.5	Normal
<b>B-M3-L</b>	Block size 20	For block with external seal (SN)	M3x0.5	Long
<b>A-M6</b>	Block size 25, 30, 35 & 55	-	M6x0.75	Normal
<b>A-M6-L</b>	Block size 25, 30, 35 & 55	For block with external seal (SN)	M6x0.75	Long
<b>B-M6</b>	Block size 25, 30, 35 & 55	-	M6x0.75	Normal
<b>B-M6-L</b>	Block size 25, 30, 35 & 55	For block with external seal (SN)	M6x0.75	Long
<b>B-PT1/8</b>	Block size 45	-	PT 1/8	Normal
<b>B-PT1/8-L</b>	Block size 45	For block with external seal (SN)	PT 1/8	Long