

## Table of contents

- CP planetary gearbox
- CPS planetary gearbox
- CPSK bevel gearbox
- CPK bevel gearbox
- NP planetary gearbox
- NPL planetary gearbox
- NPS planetary gearbox
- NPK bevel gearbox
- NPLK bevel gearbox
- NPSK bevel gearbox
- Adapter kit RHL

## CP planetary gearbox

Economical entry level planetary gearbox with impressive price-performance and quality. CP offers a simple and compact B14 output interface with smooth shaft or with a keyway. The stated maximal backlash is kept throughout the lifetime of the gearbox.

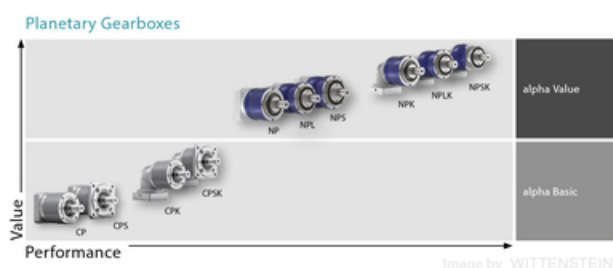
**Ratio:** 3-100

**Max. Torque (Nm):** 17 - 800

**Other models:** food-grade lubrication



Image by WITTENSTEIN



## General Data

Designation	Ratio	Size
CP005	4 / 5 / 7 / 8 / 10 / 16 / 20 / 25 / 28 / 35 / 40 / 50 / 70 / 100	05
CP015	3 / 4 / 5 / 7 / 8 / 9 / 10 / 12 / 15 / 16 / 20 / 25 / 28 / 30 / 35 / 40 / 50 / 70 / 100	015
CP025	3 / 4 / 5 / 7 / 8 / 9 / 10 / 12 / 15 / 16 / 20 / 25 / 28 / 30 / 35 / 40 / 50 / 70 / 100	025
CP035	3 / 4 / 5 / 7 / 8 / 9 / 10 / 12 / 15 / 16 / 20 / 25 / 28 / 30 / 35 / 40 / 50 / 70 / 100	035
CP045	5 / 8 / 10 / 25 / 50 / 100	045

## CPS planetary gearbox

Economical entry level planetary gearbox with impressive price-performance and quality. CPK offers a long, cylindrical output interface with an optional B5-style flange. Output shaft smooth or with a keyway. The stated maximal backlash is kept throughout the lifetime of the gearbox

**Ratio:** 3-100

**Max. Torque (Nm):** 48-272

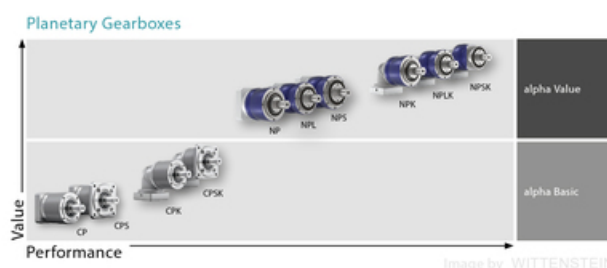
**Other models:** food-grade lubrication



Image by WITTENSTEIN



Image by WITTENSTEIN



## General Data

Designation	Ratio	Remark	Size
<b>CPS015</b>	3 / 4 / 5 / 7 / 8 / 9 / 10 / 12 / 15 / 16 / 20 / 25 / 28 / 30 / 35 / 40 / 50 / 70 / 100	Compatible with Linear unit RHL80 + Adapter kit RHL80	015
<b>CPS025</b>	3 / 4 / 5 / 7 / 8 / 9 / 10 / 12 / 15 / 16 / 20 / 25 / 28 / 30 / 35 / 40 / 50 / 70 / 100	-	025
<b>CPS035</b>	3 / 4 / 5 / 7 / 8 / 9 / 10 / 12 / 15 / 16 / 20 / 25 / 28 / 30 / 35 / 40 / 50 / 70 / 100	Compatible with Linear unit RHL110+ Adapter kit RHL110	035

## CPSK bevel gearbox

The right-angle gearboxes of the alpha Basic Line are specially designed for applications with medium requirements for positioning accuracy. The extremely compact bevel gear stage enables use in applications with space constraints.

**Ratio:** 3-100

**Max. Torque (Nm):** 33-272

**Other models:** food-grade lubrication



Image by WITTENSTEIN

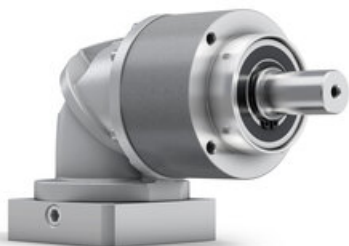
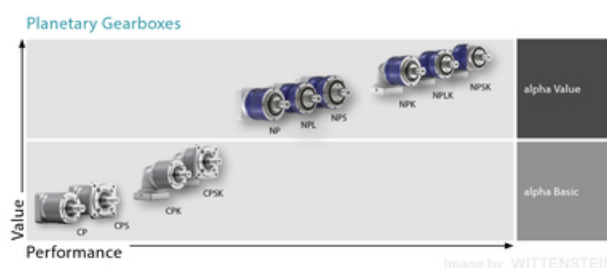


Image by WITTENSTEIN



## General Data

Designation	Ratio	Remark	Size
<b>CPSK015</b>	3 / 4 / 5 / 7 / 8 / 9 / 10 / 12 / 15 / 16 / 20 / 25 / 28 / 30 / 35 / 40 / 50 / 70 / 100	Compatible with Linear unit RHL80 + Adapter kit RHL80	015
<b>CPSK025</b>	3 / 4 / 5 / 7 / 8 / 9 / 10 / 12 / 15 / 16 / 20 / 25 / 28 / 30 / 35 / 40 / 50 / 70 / 100	-	025
<b>CPSK035</b>	3 / 4 / 5 / 7 / 8 / 9 / 10 / 12 / 15 / 16 / 20 / 25 / 28 / 30 / 35 / 40 / 50 / 70 / 100	Compatible with Linear unit RHL110 + Adapter kit RHL100	035

## CPK bevel gearbox

The most economical right-angle planetary gearbox. Based on the CP gearbox with an additional bevel-gear input stage. Used where space-constraints does not allow an in-line assembly with the motor. The stated maximal backlash is kept throughout the lifetime of the gearbox.

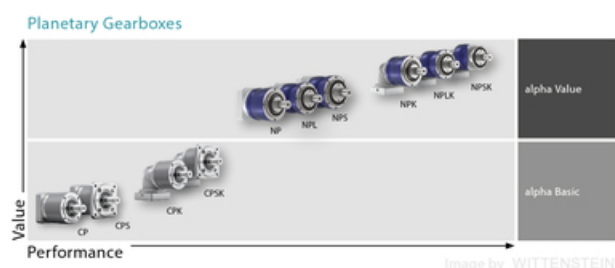
**Ratio:** 3-100

**Max. Torque (Nm):** 14 - 700

**Other models:** food-grade lubrication



Image by WITTENSTEIN





## General Data

Designation	Ratio	Size
CPK005	4 / 5 / 7 / 8 / 10 / 16 / 20 / 25 / 28 / 35 / 40	005
CPK015	3 / 4 / 5 / 7 / 8 / 9 / 10 / 12 / 15 / 16 / 20 / 25 / 28 / 30 / 35 / 40 / 50 / 70 / 100	015
CPK025	3 / 4 / 5 / 7 / 8 / 9 / 10 / 12 / 15 / 16 / 20 / 25 / 28 / 30 / 35 / 40 / 50 / 70 / 100	025
CPK035	3 / 4 / 5 / 7 / 8 / 9 / 10 / 12 / 15 / 16 / 20 / 25 / 28 / 30 / 35 / 40 / 50 / 70 / 100	035
CPK045	5 / 8 / 10 / 25 / 50 / 100	045

## NP planetary gearbox

Universally suitable gearbox from alpha Value Line with the best price-performance level. With LP+ B14 output geometry. Smooth or keyed output shaft. Optional available in High Torque execution for ratio 3:1 and 4:1 and products thereof for 2-stage gears. The stated maximal backlash is kept throughout the lifetime of the gearbox. Contact Rollco for CAD-files.

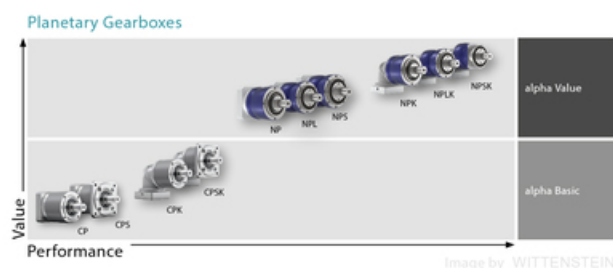
**Ratio:** 3-100

**Max. Torque (Nm):** 18 - 800

**Other models:** food-grade lubrication



Image by WITTENSTEIN



## General Data

Designation	Ratio	Size
<b>NP005</b>	4 / 5 / 7 / 8 / 10 / 16 / 20 / 25 / 28 / 35 / 40 / 50 / 64 / 70 / 100	005
<b>NP015</b>	3 / 4 / 5 / 7 / 8 / 10 / 12 / 15 / 16 / 20 / 25 / 28 / 30 / 32 / 35 / 40 / 50 / 64 / 70 / 100 (Gearbox model Standard)	015
<b>NP025</b>	3 / 4 / 5 / 7 / 8 / 9 / 10 / 12 / 15 / 16 / 20 / 25 / 28 / 30 / 32 / 35 / 40 / 50 / 64 / 70 / 100 (Gearbox model Standard)	025
<b>NP035</b>	3 / 4 / 5 / 7 / 8 / 9 / 10 / 12 / 15 / 16 / 20 / 25 / 28 / 30 / 32 / 35 / 40 / 50 / 64 / 70 / 100 (Gearbox model Standard)	035
<b>NP045</b>	5 / 8 / 10 / 25 / 32 / 50 / 64 / 100	045

## NPL planetary gearbox

Universally suitable gearbox from alpha Value Line. With LP+ B14 output geometry. Smooth or keyed cylindrical output shaft or DIN 5480 involute splined shaft. Reinforced output bearings enable applications with high radial and axial shaft loads. Optional available in High Torque execution for ratio 3:1 and 4:1 and products thereof for 2-stage gears. The stated maximal backlash is kept throughout the lifetime of the gearbox. Contact Rollco for CAD-files.

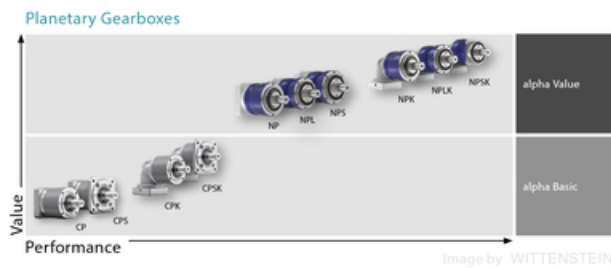
**Ratio:** 3-100

**Max. Torque (Nm):** 51 - 800

**Other models:** food-grade lubrication



Image by WITTENSTEIN



## General Data

Designation	Ratio	Size
<b>NPL015</b>	3 / 4 / 5 / 7 / 8 / 10 / 12 / 15 / 16 / 20 / 25 / 28 / 30 / 32 / 35 / 40 / 50 / 64 / 70 / 100 (Gearbox model Standard)	015
<b>NPL025</b>	3 / 4 / 5 / 7 / 8 / 9 / 10 / 12 / 15 / 16 / 20 / 25 / 28 / 30 / 32 / 35 / 40 / 50 / 64 / 70 / 100 (Gearbox model Standard)	025
<b>NPL035</b>	3 / 4 / 5 / 7 / 8 / 9 / 10 / 12 / 15 / 16 / 20 / 25 / 28 / 30 / 32 / 35 / 40 / 50 / 64 / 70 / 100 (Gearbox model Standard)	035
<b>NPL045</b>	5 / 8 / 10 / 25 / 32 / 50 / 64 / 100	045

## NPS planetary gearbox

Universally suitable gearbox from alpha Value Line with the best price-performance level. With SP+ B5 output geometry. Smooth or keyed cylindrical output shaft or DIN 5480 involute splined shaft. Reinforced output bearings enable applications with high radial and axial shaft loads. Optional available in High Torque execution for ratio 3:1 and 4:1 and products thereof for 2-stage gears. The stated maximal backlash is kept throughout the lifetime of the gearbox.

Contact Rollco for CAD-files.

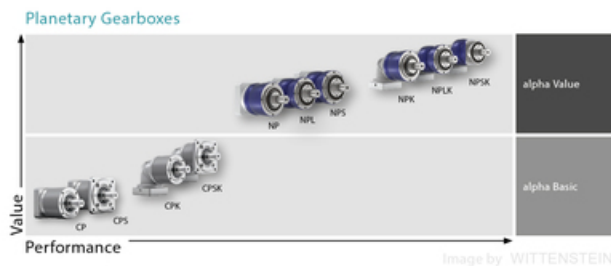
**Ratio:** 3-100

**Max. Torque (Nm):** 51 - 800

**Other models:** food-grade lubrication



Image by WITTENSTEIN



## General Data

Designation	Ratio	Size
<b>NPS015</b>	3 / 4 / 5 / 7 / 8 / 10 / 12 / 15 / 16 / 20 / 25 / 28 / 30 / 32 / 35 / 40 / 50 / 64 / 70 / 100 (Gearbox model standard)	015
<b>NPS025</b>	3 / 4 / 5 / 7 / 8 / 9 / 10 / 12 / 15 / 16 / 20 / 25 / 28 / 30 / 32 / 35 / 40 / 50 / 64 / 70 / 100 (Gearbox model standard)	025
<b>NPS035</b>	3 / 4 / 5 / 7 / 8 / 9 / 10 / 12 / 15 / 16 / 20 / 25 / 28 / 30 / 32 / 35 / 40 / 50 / 64 / 70 / 100 (Gearbox model standard)	035
<b>NPS045</b>	5 / 8 / 10 / 25 / 32 / 50 / 64 / 100	045

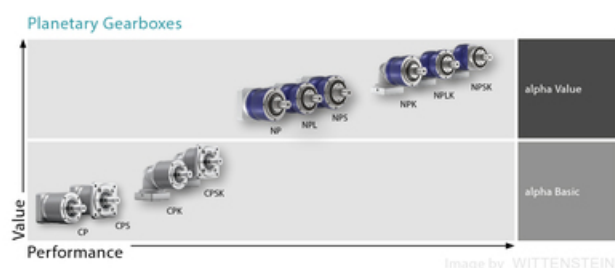
## NPK bevel gearbox

Versatile right-angle planetary gearbox. Based on the NP gearbox with an additional bevel-gear input stage. Used where space-constraints does not allow an in-line assembly with the motor. With LP+ B14 output geometry. Smooth or keyed output shaft. The stated maximal backlash is kept throughout the lifetime of the gearbox. Contact Rollco for CAD-files.

**Ratio:** 3-100

**Max. Torque (Nm):** 14 - 700

**Other models:** food-grade lubrication





## General Data

Designation	Ratio	Size
<b>NPK005</b>	4/5/7/8/10/16/20/25/28/35/40/50/64/70/100 (Gearbox model Standard)	005
<b>NPK015</b>	3/4/5/7/8/10/12/15/16/20/25/28/30/32/35/40/50/64/70/100 (Gearbox model Standard)	015
<b>NPK025</b>	3/4/5/7/8/9/10/12/15/16/20/25/28/30/32/35/40/50/64/70/100 (Gearbox model Standard)	025
<b>NPK035</b>	3/4/5/7/8/9/10/12/15/16/20/25/28/30/32/35/40/50/64/70/100 (Gearbox model Standard)	035
<b>NPK045</b>	5/8/10/25/32/50/64/100 (Gearbox model Standard)	045

## NPLK bevel gearbox

Versatile right-angle planetary gearbox. Based on the NPL gearbox with an additional bevel-gear input stage. Used where space-constraints does not allow an in-line assembly with the motor. With LP+ B14 output geometry. Smooth or keyed cylindrical output shaft or DIN 5480 involute splined shaft. Reinforced output bearings enable applications with high radial and axial shaft loads. The stated maximal backlash is kept throughout the lifetime of the gearbox.

Contact Rollco for CAD-files.

**Ratio:** 3-100

**Max. Torque (Nm):** 33 - 700

**Other models:** food-grade lubrication

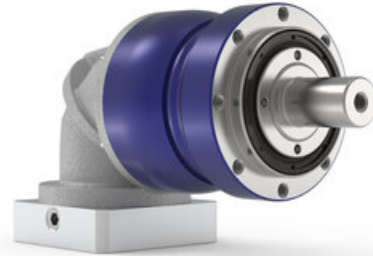
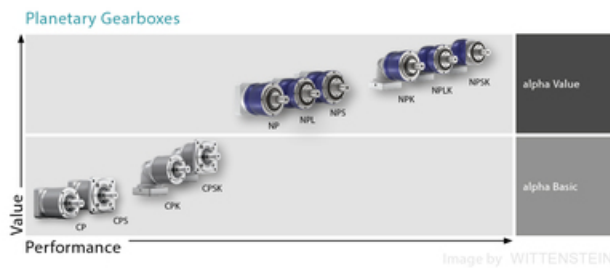


Image by WITTENSTEIN



## General Data

Designation	Ratio	Size
<b>NPLK015</b>	3 / 4 / 5 / 7 / 8 / 10 / 12 / 15 / 16 / 20 / 25 / 28 / 30 / 32 / 35 / 40 / 50 / 64 / 70 / 100 (Gearbox model standard)	015
<b>NPLK025</b>	3 / 4 / 5 / 7 / 8 / 9 / 10 / 12 / 15 / 16 / 20 / 25 / 28 / 30 / 32 / 35 / 40 / 50 / 64 / 70 / 100 (Gearbox model standard)	025
<b>NPLK035</b>	3 / 4 / 5 / 7 / 8 / 9 / 10 / 12 / 15 / 16 / 20 / 25 / 28 / 30 / 32 / 35 / 40 / 50 / 64 / 70 / 100 (Gearbox model standard)	035
<b>NPLK045</b>	5 / 8 / 10 / 25 / 32 / 50 / 64 / 100 (Gearbox model standard)	045

## NPSK bevel gearbox

Versatile right-angle planetary gearbox. Based on the NPL gearbox with an additional bevel-gear input stage. Used where space-constraints does not allow an in-line assembly with the motor. With SP+ B5 output geometry. Smooth or keyed cylindrical output shaft or DIN 5480 involute splined shaft. Reinforced output bearings enable applications with high radial and axial shaft loads. The stated maximal backlash is kept throughout the lifetime of the gearbox.

Contact Rollco for CAD-files.

**Ratio:** 3-100

**Max. Torque (Nm):** 33 - 700

**Other models:** food-grade lubrication

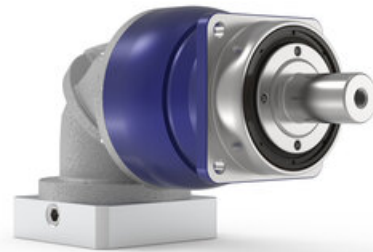
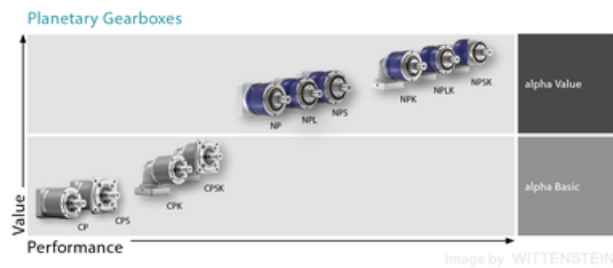


Image by WITTENSTEIN

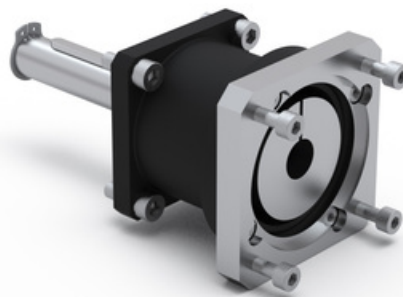


## General Data

Designation	Ratio	Size
<b>NPSK015</b>	3 / 4 / 5 / 7 / 8 / 10 / 12 / 15 / 16 / 20 / 25 / 28 / 30 / 32 / 35 / 40 / 50 / 64 / 70 / 100	015
<b>NPSK025</b>	3 / 4 / 5 / 7 / 8 / 9 / 10 / 12 / 15 / 16 / 20 / 25 / 28 / 30 / 32 / 35 / 40 / 50 / 64 / 70 / 100	025
<b>NPSK035</b>	3 / 4 / 5 / 7 / 8 / 9 / 10 / 12 / 15 / 16 / 20 / 25 / 28 / 30 / 32 / 35 / 40 / 50 / 64 / 70 / 100	035
<b>NPSK045</b>	5 / 8 / 10 / 25 / 32 / 50 / 64 / 100	045

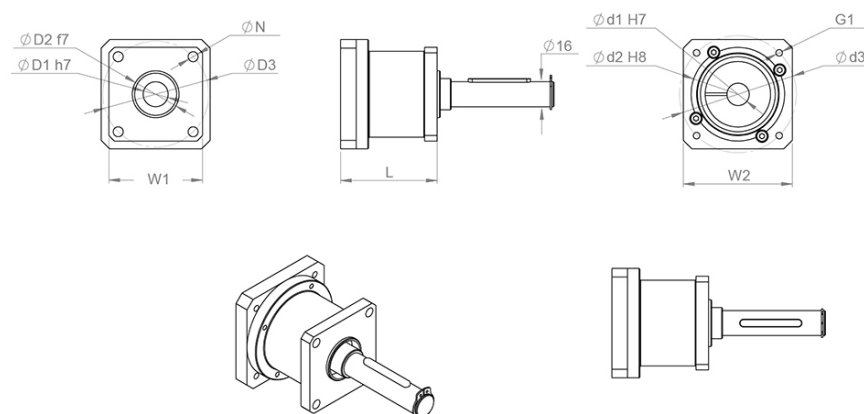
## Adapter kit RHL

Easily connect your RHL Linear unit with a planetary gear by using our adapter-kit. Design your complete solution of RHL Linear unit + Adapter kit + Planetary gear with our CAD-Configurator.

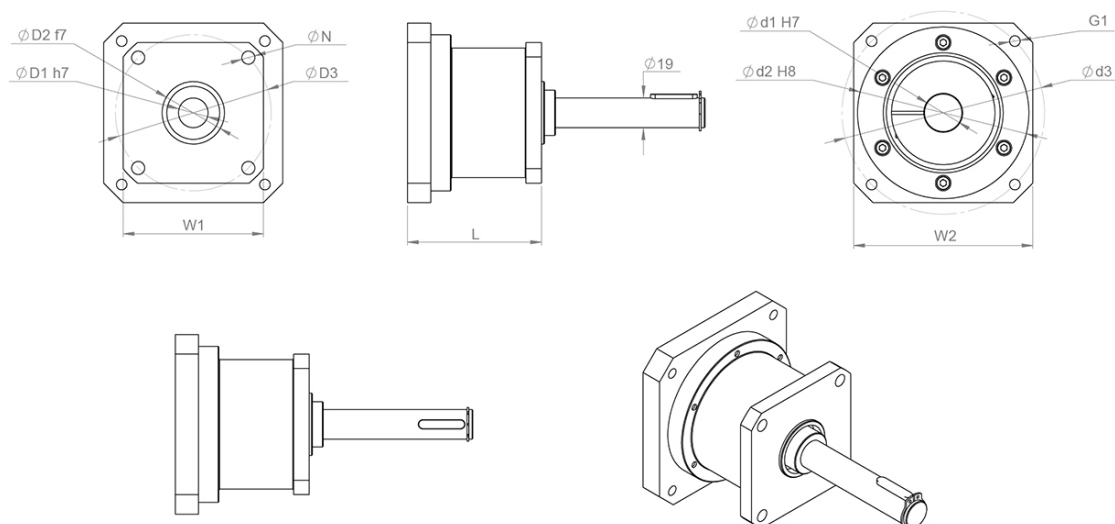


## General Data

RHL80



RHL110



Designation	Compatible with	D1	D2	D3	G1
<b>RHL80-H16-CPS015 Adapter kit</b>	RHL80	14	60	75	M5
<b>RHL110-H19-CPS035 Adapter kit</b>	RHL110	24	110	130	M8

Designation	N1	L	W1	W2
<b>RHL80-H16-CPS015 Adapter kit</b>	6.4	62	60x60	70x70
<b>RHL110-H19-CPS035 Adapter kit</b>	8.4	86	90x90	115x115

