

CPK bevel gearbox

The most economical right-angle planetary gearbox. Based on the CP gearbox with an additional bevel-gear input stage. Used where space-constraints does not allow an in-line assembly with the motor. The stated maximal backlash is kept throughout the lifetime of the gearbox.

Ratio: 3-100

Max. Torque (Nm): 14 - 700

Other models: food-grade lubrication

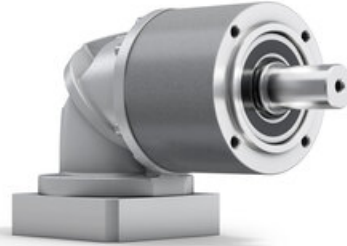
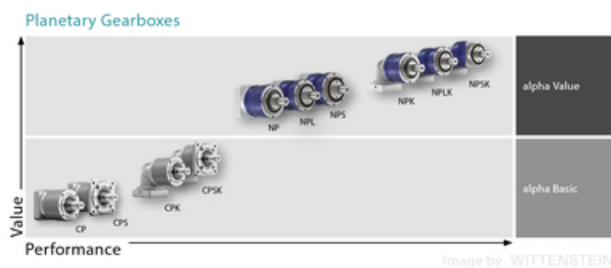


Image by WITTENSTEIN



General Data

Designation	Ratio	Size
CPK005	4 / 5 / 7 / 8 / 10 / 16 / 20 / 25 / 28 / 35 / 40	005
CPK015	3 / 4 / 5 / 7 / 8 / 9 / 10 / 12 / 15 / 16 / 20 / 25 / 28 / 30 / 35 / 40 / 50 / 70 / 100	015
CPK025	3 / 4 / 5 / 7 / 8 / 9 / 10 / 12 / 15 / 16 / 20 / 25 / 28 / 30 / 35 / 40 / 50 / 70 / 100	025
CPK035	3 / 4 / 5 / 7 / 8 / 9 / 10 / 12 / 15 / 16 / 20 / 25 / 28 / 30 / 35 / 40 / 50 / 70 / 100	035
CPK045	5 / 8 / 10 / 25 / 50 / 100	045