

BF40MDK

This is a selection of BF40MDK standard conveyor sizes. Given speeds are based on using an MS63B-4 with the appropriate SB030 gear.

Recommended max. load 75 kg. The recommended max load is evenly spread over the entire conveyor and is in relation to a nominal width and length.

Dimensions in mm.

For other dimensions please contact Rollco.

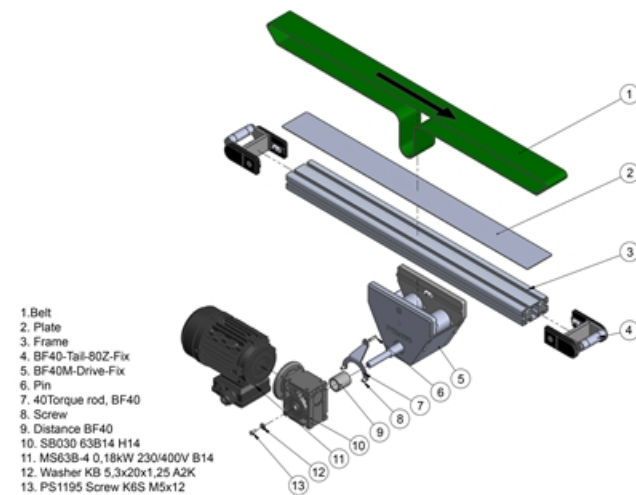
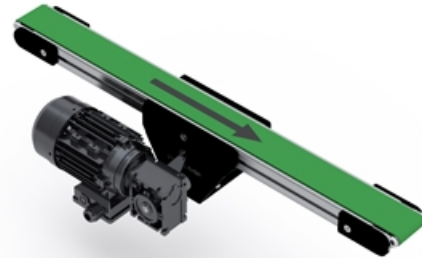
Length (mm): Up to 4000

Gear ratio (I): 5 / 7.5 / 10 / 15 / 20 / 25 / 30 / 40 / 50

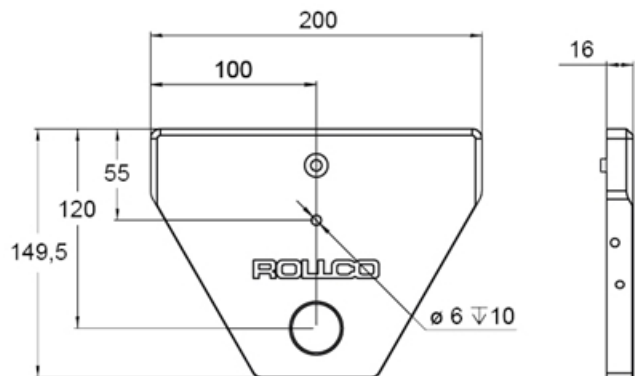
Speed (m/min): 37 (37.3) / 25 (24.9) / 19 (18.7) / 12 (12.4) / 9 (9.4) / 8 (7.5) / 6 (6.2) / 5 (4.7) / 4 (3.7)

Drive side: Right/left

Motor Position: Horizontal/vertical — 1-4

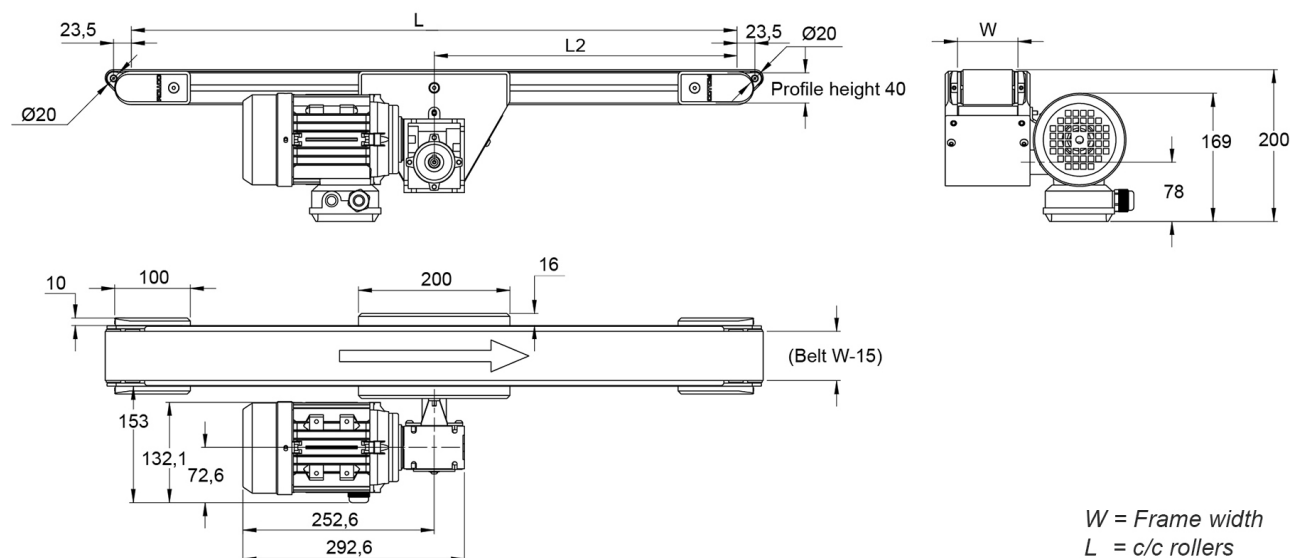


BF40M Drive holder



| Gear ratio (I) | Speed (m/min) |
|----------------|---------------|
| 5 | 37 (37,3) |
| 7,5 | 25 (24,9) |
| 10 | 19 (18,7) |
| 15 | 12 (12,4) |
| 20 | 9 (9,4) |
| 25 | 8 (7,5) |
| 30 | 6 (6,2) |
| 40 | 5 (4,7) |
| 50 | 4 (3,7) |

General Data



| Designation | Width (mm) |
|---------------|------------|
| BF40MDK - 40 | 40 |
| BF40MDK - 80 | 80 |
| BF40MDK - 120 | 120 |
| BF40MDK - 160 | 160 |
| BF40MDK - 200 | 200 |
| BF40MDK - 250 | 250 |
| BF40MDK - 300 | 300 |
| BF40MDK - 350 | 350 |
| BF40MDK - 400 | 400 |