

## Angle Feet Al, adjustable

### Application:

For adjusting and fixing machine frames and protection panel support legs to the floor. Vertical adjustment: 62 mm

### Supply:

1x angle foot

2x t-nut M 8 / ball-type, slide-in

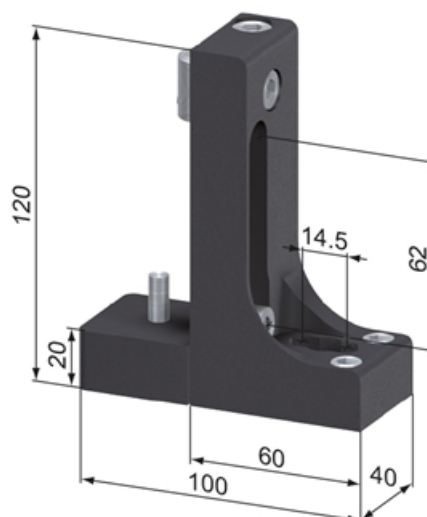
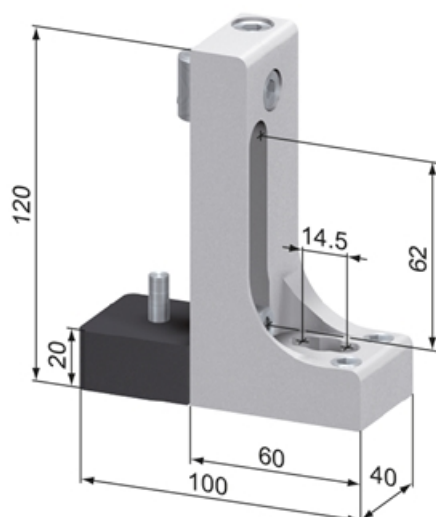
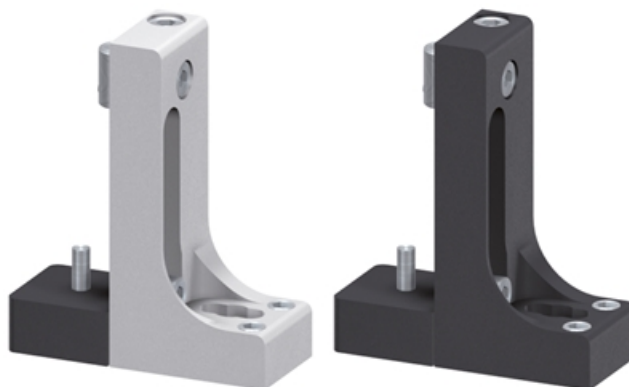
2x cap head screw M 8 x 25, DIN 6912

2x grub screw M 12 x 20

**Material:** Aluminum, natural or black anodized

**System:** 40 - Slot 8

**Type:** Feet



**SZ1710V**

## General Data

Designation	Description	System	Material	Weight (g)
<b>SZ1710V</b>	Fixing Set For Angle Feet	40 - Slot 8	-	-
<b>SF1200N</b>	Angle Foot AS, adjustable	40 - Slot 8	Aluminum, natural anodized	612
<b>SF1200S</b>	Angle Foot AS, adjustable	40 - Slot 8	Aluminum, black anodized	612