

PAS ---.0360

- Polyamide roller combined – fixed with oilamide sliding block
- Lubricated for lifetime
- High abrasion resistance
- Low friction
- High chemical resistance to alcohol, salts, greases and certain acids and alkalis in diluted concentration.

Reduction of value by speed of:

- 1 m/sec: 0%
- 2 m/sec: -20%
- 3 m/sec: -30%

Use profile UP---.0730. See Fixing element rectangular and square.

Order example: Roller + fixing plate PAS040.0360/BQ
1000

Roller Ø 40 mm - welded with mounting element 50 mm x
50 mm x 8 mm

Dimensions in mm.

Temperature: Maximum working temperature 80° C.

Speed: Travel speed up to 5 m/sec

Roller Type: Polyamide

Sizes Available: 40; 50; 60; 100

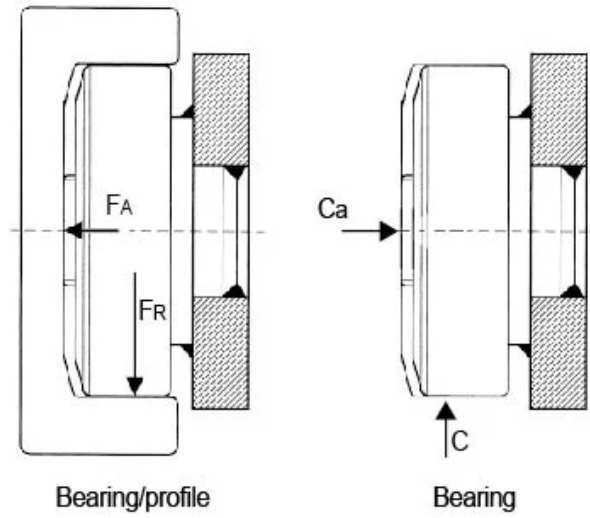


PAS ---.0360



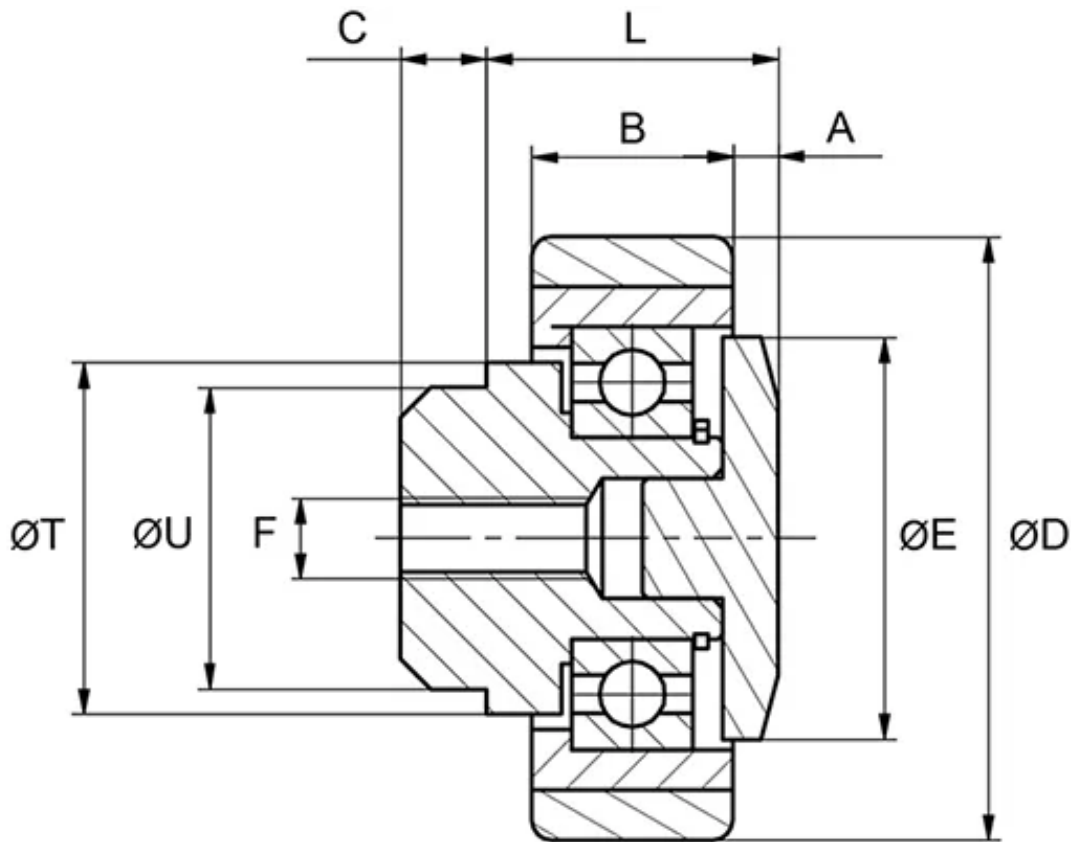
General Data

FA = System Load Capacity Axial
 FR = System Load Capacity Radial
 Ca = Dynamic Load Capacity Axial
 C = Dynamic Load Capacity Radial



| Designation | System Load Capacity Radial (N) | System Load Capacity Axial (N) | Profile |
|-------------|---------------------------------|--------------------------------|------------|
| PAS040.0360 | 900 | 400 | UP---.0730 |
| PAS050.0360 | 1200 | 400 | UP---.0730 |
| PAS060.0360 | 1500 | 600 | UP---.0730 |
| PAS100.0360 | 2500 | 600 | UP---.0730 |

Dimensions



| Designation | A | B | C | D | E | F | L | T | U |
|-------------|-----|----|-----|-------|----|----|----|----|----|
| PAS040.0360 | 2.8 | 15 | 2.8 | 40 | 20 | M6 | 24 | 25 | 20 |
| PAS050.0360 | 5 | 15 | 5 | 52.5 | 31 | M8 | 27 | 35 | 30 |
| PAS060.0360 | 4.5 | 18 | 8.5 | 62.5 | 40 | M8 | 29 | 35 | 30 |
| PAS100.0360 | 6.3 | 25 | 8 | 101.2 | 64 | — | 41 | 50 | 45 |