

Cables

For Mini Linear Units MGBS & MGTB and MCE & MSCE
Mini Electric Cylinders & Sliders.

See documentation below for more information.

Drive to motor cables in general consist of:

- a motor cable,
- an encoder cable,
- a brake cable (only if a motor with a brake is used).

Power cable is used for supplying the power from power supply to the drive.

Signal cable is mandatory for the following cases:

- if a motor with a brake is used,
- if a pulse/direction drive control is used,
- if the limit switches are used.

Dimensions in mm.





General Data

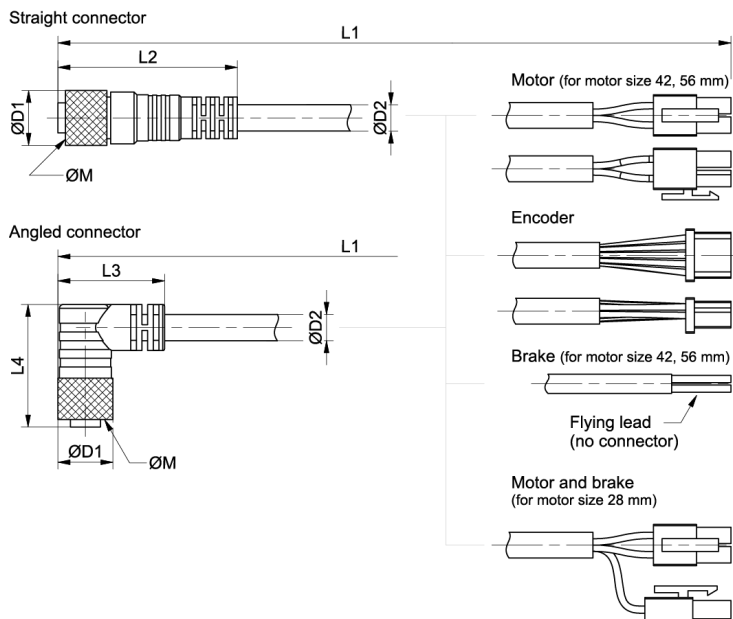
Designation	Compatible with	Type	Cable Length (m)	Cable Diameter D (mm)	Material
STCF-M-A12-...	STMN-42-... ; STMN-56-... ; STDF-...	Motor cable, angled connector	3, 5, 10	5.1	TPE, black
STCF-M-S12-...	STMN-42-... ; STMN-56-... ; STDF-...	Motor cable, straight connector	3, 5, 10	5.1	TPE, black
STCF-B-A8-...	STMN-42-...-B ; STMN-56-...-B ; STDF-...	Brake cable, angled connector	3, 5, 10	4.5	TPE, black
STCF-B-S8-...	STMN-42-...-B ; STMN-56-...-B ; STDF-...	Brake cable, straight connector	3, 5, 10	4.5	TPE, black
STCF-E-A12-...	STMN-42-... ; STMN-56-... ; STDF-...	Encoder cable, angled connector	3, 5, 10	6.7	TPE, black
STCF-E-S12-...	STMN-42-... ; STMN-56-... ; STDF-...	Encoder cable, straight connector	3, 5, 10	6.7	TPE, black
STCF-P-02	STDF-...	Power cable	2	4.6	PVC, black
STCF-S-EC-02	STDF-...-EC	Signal cable, EtherCAT	2	6.4	PVC, black
STCF-S-EN-02	STDF-...-EN	Signal cable, Ethernet based communication	2	6.9	PVC, black
STCF-S-PD-02	STDF-...-PD	Signal cable, Pulse-direction control	2	6.4	PVC, black
STCS-E-A12-...	STD-L-040-C-PN	Encoder cable	3, 5, 10	6.3	-
STCS-E-S12-...	STD-L-040-C-PN	Encoder cable	3, 5, 10	6.3	-
STCS-M-A12-...	STD-L-040-C-PN	Motor cable	3, 5, 10	5.7	-
STCS-M-S12-...	STD-L-040-C-PN	Motor cable	3, 5, 10	5.7	-
STCS-B-A8-...	STD-L-040-C-PN	Brake cable	3, 5, 10	4.5	-
STCS-B-S8-...	STD-L-040-C-PN	Brake cable	3, 5, 10	4.5	-

Designation	Bending Radius (mm)	Shielded	Connector Size	Temperature Range Fixed (°C)	Temperature Range Flexing (°C)
STCF-M-A12-...	min. 7,5 × D	Yes	M12	-40/+70	+5/+70
STCF-M-S12-...	min. 7,5 × D	Yes	M12	-40/+70	+5/+70
STCF-B-A8-...	min. 7,5 × D	Yes	M8	-40/+70	+5/+70

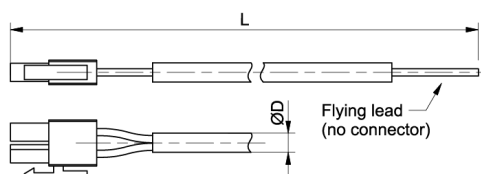
Designation	Bending Radius (mm)	Shielded	Connector Size	Temperature Range Fixed (°C)	Temperature Range Flexing (°C)
STCF-B-S8-...	min. $7,5 \times D$	Yes	M8	-40/+70	+5/+70
STCF-E-A12-...	min. $7,5 \times D$	Yes	M12	-40/+70	+5/+70
STCF-E-S12-...	min. $7,5 \times D$	Yes	M12	-40/+70	+5/+70
STCF-P-02	-	Yes	-	-	-
STCF-S-EC-02	-	Yes	-	-	-
STCF-S-EN-02	-	Yes	-	-	-
STCF-S-PD-02	-	Yes	-	-	-
STCS-E-A12-...	Min. 63	-	-	-20/+80	-25/+60
STCS-E-S12-...	Min. 63	-	-	-20/+80	-25/+60
STCS-M-A12-...	Min. 57	-	-	-20/+80	-25/+60
STCS-M-S12-...	Min. 57	-	-	-20/+80	-25/+60
STCS-B-A8-...	Min. 45	-	-	-20/+80	-5/+60
STCS-B-S8-...	Min. 45	-	-	-20/+80	-5/+60

Dimensions

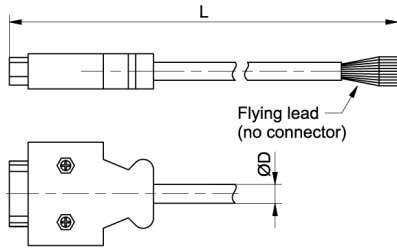
Motor, encoder and brake cables (motor and drive side)



Power cables for the stepper motors (only for the STDF drives)



Signal cables for the stepper motors (only for the STDF drives)



Designation	L1	L2	L3	L4	D1	D2	M	L	D
STCF-M-A12-...	3, 5, 10 (m)	47.7	28.4	32.6	14.6	5.1	M12	-	-
STCF-M-S12-...	3, 5, 10 (m)	47.7	28.4	32.6	14.6	5.1	M12	-	-
STCF-B-A8-...	3, 5, 10 (m)	41.7	30.9	25.2	9.9	4.5	M8	-	-
STCF-B-S8-...	3, 5, 10 (m)	41.7	30.9	25.2	9.9	4.5	M8	-	-
STCF-E-A12-...	3, 5, 10 (m)	47.7	28.4	32.6	14.6	6.7	M12	-	-
STCF-E-S12-...	3, 5, 10 (m)	47.7	28.4	32.6	14.6	6.7	M12	-	-
STCF-P-02	-	-	-	-	-	-	-	2 (m)	4.6
STCF-S-EC-02	-	-	-	-	-	-	-	2 (m)	6.4
STCF-S-EN-02	-	-	-	-	-	-	-	2 (m)	6.9
STCF-S-PD-02	-	-	-	-	-	-	-	2 (m)	6.4
STCS-E-A12-...	-	-	-	-	-	-	-	-	-
STCS-E-S12-...	-	-	-	-	-	-	-	-	-
STCS-M-A12-...	-	-	-	-	-	-	-	-	-
STCS-M-S12-...	-	-	-	-	-	-	-	-	-
STCS-B-A8-...	-	-	-	-	-	-	-	-	-
STCS-B-S8-...	-	-	-	-	-	-	-	-	-