

SSG

Dimensions in mm.

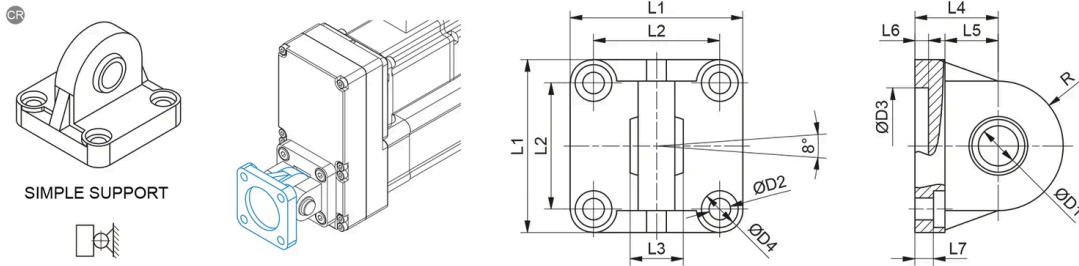
Material: Aluminium or stainless steel AISI 316



General Data

| Designation | Description | Compatible with | Material | Fmax (N) | Mass (kg) |
|---------------------------|-------------|-----------------|--------------------------|----------|-----------|
| SSG 32 - 9292 | SSG 32 | PNCE 32 | Aluminium | F PNCE | 0.09 |
| SSG 32 CR - 69542 | SSG 32 CR | PNCE 32 | Stainless steel AISI 316 | F PNCE | 0.18 |
| SSG 40 - 9294 | SSG 40 | PNCE 40 | Aluminium | F PNCE | 0.13 |
| SSG 40 CR - 69544 | SSG 40 CR | PNCE 40 | Stainless steel AISI 316 | F PNCE | 0.29 |
| SSG 50 - 9296 | SSG 50 | PNCE 50 | Aluminium | 14400 | 0.24 |
| SSG 50 CR - 50709 | SSG 50 CR | PNCE 50 | Stainless steel AISI 316 | 14400 | 0.42 |
| SSG 63 - 9298 | SSG 63 | PNCE 63 | Aluminium | 14400 | 0.3 |
| SSG 63 CR - 69546 | SSG 63 CR | PNCE 63 | Stainless steel AISI 316 | 14400 | 0.66 |
| SSG 80 - 9300 | SSG 80 | PNCE 80 | Aluminium | 22500 | 0.54 |
| SSG 80 CR - 83249 | SSG 80 CR | PNCE 80 | Stainless steel AISI 316 | 22500 | 1.24 |
| SSG 100 - 19731 | SSG 100 | PNCE 100 | Aluminium | 22500 | 0.68 |
| SSG 100 CR - 83250 | SSG 100 CR | PNCE 100 | Stainless steel AISI 316 | 22500 | 1.9 |

Dimensions



| Designation | L1 | L2 | L3 | L4 | L5 | L6 | L7 | D1 | D2 |
|---------------------------|-----|------|----|------------|----|----|------------|-----------|-------------|
| SSG 32 - 9292 | 45 | 32.5 | 14 | 22 (JS 15) | 12 | 5 | 5.5 (±0.5) | Ø 10 (H7) | Ø 6.6 (H13) |
| SSG 32 CR - 69542 | 45 | 32.5 | 14 | 22 (JS 15) | 12 | 5 | 5.5 (±0.5) | Ø 10 (H7) | Ø 6.6 (H13) |
| SSG 40 - 9294 | 52 | 38 | 16 | 25 (JS 15) | 15 | 5 | 5.5 (±0.5) | Ø 12 (H7) | Ø 6.6 (H13) |
| SSG 40 CR - 69544 | 55 | 38 | 16 | 25 (JS 15) | 15 | 5 | 5.5 (±0.5) | Ø 12 (H7) | Ø 6.6 (H13) |
| SSG 50 - 9296 | 65 | 46.5 | 21 | 27 (JS 15) | 15 | 5 | 6.5 (±0.5) | Ø 16 (H7) | Ø 9 (H13) |
| SSG 50 CR - 50709 | 65 | 46.5 | 21 | 27 (JS 15) | 17 | 5 | 6.5 (±0.5) | Ø 16 (H7) | Ø 9 (H13) |
| SSG 63 - 9298 | 75 | 56.5 | 21 | 32 (JS 15) | 20 | 5 | 6.5 (±0.5) | Ø 16 (H7) | Ø 9 (H13) |
| SSG 63 CR - 69546 | 75 | 56.5 | 21 | 32 (JS 15) | 20 | 5 | 6.5 (±0.5) | Ø 16 (H7) | Ø 9 (H13) |
| SSG 80 - 9300 | 95 | 72 | 25 | 36 (JS 15) | 20 | 9 | 10 (±0.5) | Ø 20 (H7) | Ø 11 (H13) |
| SSG 80 CR - 83249 | 95 | 72 | 25 | 36 (JS 15) | 22 | 5 | 10 (±0.5) | Ø 20 (H7) | Ø 11 (H13) |
| SSG 100 - 19731 | 115 | 89 | 25 | 41 (JS 15) | 25 | 9 | 10 (±0.5) | Ø 20 (H7) | Ø 11 (H13) |
| SSG 100 CR - 83250 | 115 | 89 | 25 | 41 (JS 15) | 25 | 5 | 10 (±0.5) | Ø 20 (H7) | Ø 11 (H13) |

| Designation | D3 | D4 | R |
|---------------------------|------------|------------|----|
| SSG 32 - 9292 | Ø 30 (H11) | Ø 11 (H13) | 16 |
| SSG 32 CR - 69542 | Ø 30 (H11) | Ø 11 (H13) | 15 |
| SSG 40 - 9294 | Ø 35 (H11) | Ø 11 (H13) | 18 |
| SSG 40 CR - 69544 | Ø 35 (H11) | Ø 11 (H13) | 18 |
| SSG 50 - 9296 | Ø 40 (H11) | Ø 15 (H13) | 21 |
| SSG 50 CR - 50709 | Ø 40 (H11) | Ø 15 (H13) | 21 |
| SSG 63 - 9298 | Ø 45 (H11) | Ø 15 (H13) | 23 |
| SSG 63 CR - 69546 | Ø 45 (H11) | Ø 15 (H13) | 23 |
| SSG 80 - 9300 | Ø 45 (H11) | Ø 18 (H13) | 28 |
| SSG 80 CR - 83249 | Ø 45 (H11) | Ø 18 (H13) | 27 |
| SSG 100 - 19731 | Ø 55 (H11) | 18 (Ø H13) | 30 |
| SSG 100 CR - 83250 | Ø 55 (H11) | 18 (Ø H13) | 30 |