

Ball Head 15 with Female Thread

Directly links knuckle feet by means of a standard screw.

For hinged steel/stainless steel knuckle feet

Material: Galvanised/stainless steel: 1.4305

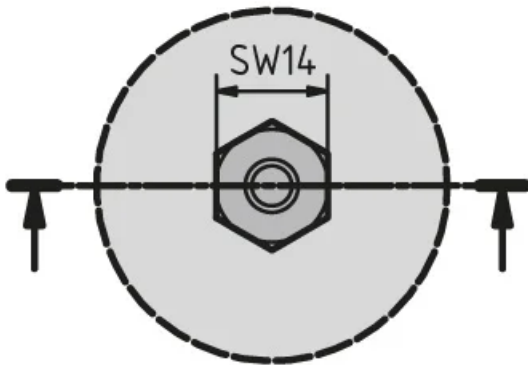
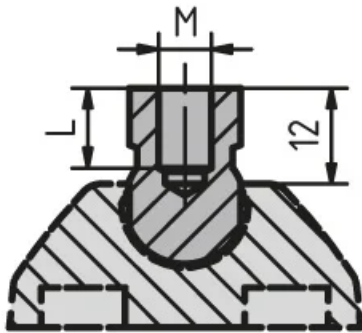
System: 30 - Slot 6; 20 - Slot 5

Type: Feet





General Data



Designation	Description	Material	MxL
PZ5154	Ball 15	Galvanised steel	6x10
PZ5155	Ball 15	Stainless steel	6x10
PZ5156	Ball 15	Galvanised steel	8x10
PZ5157	Ball 15	Stainless steel	8x10