

## SFYAR

Single Nut with Flange, Over Lead.

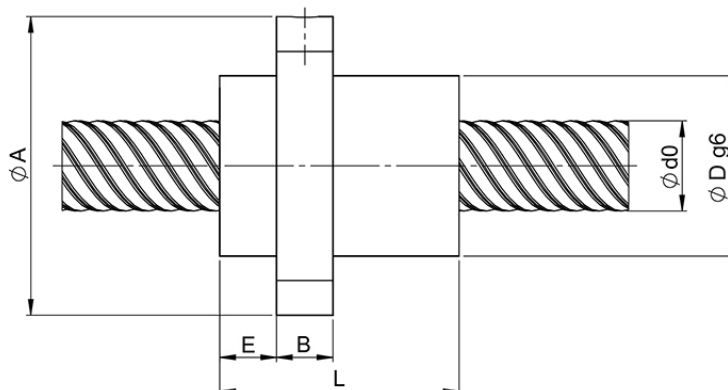
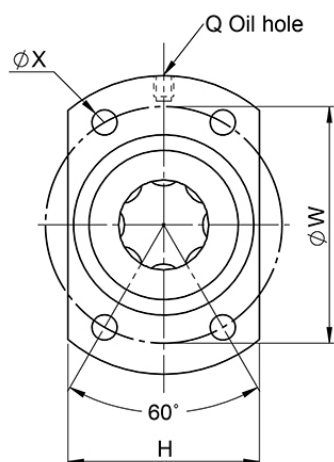
All dimensions in mm.



## General Data

Designation	Compatible with	Dynamic Load Ratings Ca (N)	Static Load Ratings C0a (N)	Ball diameter	Turns x circuits
<b>SFYAR1632</b>	BKN12 / FKN12 / BFN12 / FFN12	4.93	11.16	2.778	0.8 x 2
<b>SFYAR2040</b>	BKN15 / FKN15 / BFN15 / FFN15	6.53	15.97	3.175	0.8 x 2
<b>SFYAR2550</b>	BKN20 / FKN20 / BFN20 / FFN20	9.76	24.95	3.969	0.8 x 2

## Dimensions



Designation	A	B	D	E	H	L	Q	W	X
<b>SFYAR1632</b>	53	10	32	10.1	34	42.5	M6	42	4.5
<b>SFYAR2040</b>	62	10	39	13	41	48	M6	50	5.5
<b>SFYAR2550</b>	74	12	47	15	49	58	M6	60	6.6

Designation	d0 x Lead
<b>SFYAR1632</b>	16 x 32
<b>SFYAR2040</b>	20 x 40
<b>SFYAR2550</b>	25 x 50