

## Standard MR-M Rail

Tapped from above.

Dimensions in mm.

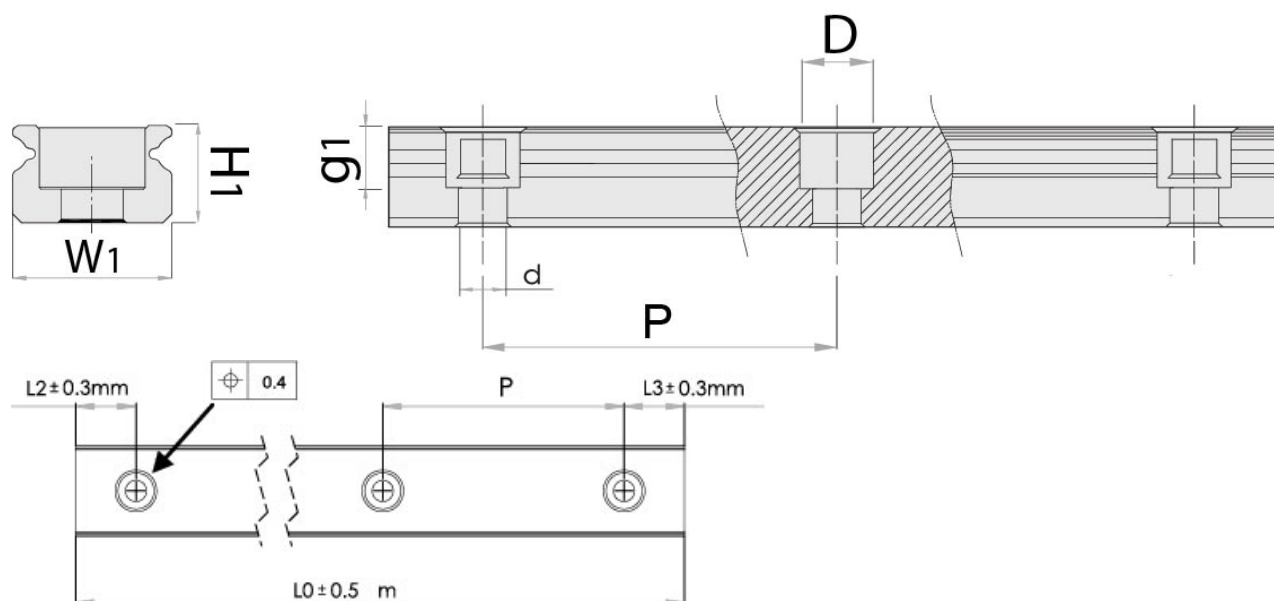
Please note that blocks and rails are not sold separately for sizes 2 and 3. Due to the small dimensions, blocks and sliders must be assembled and matched carefully to ensure correct quality and tolerances.



## General Data

| Designation | Weight Rail (g/m) |
|-------------|-------------------|
| MR5M        | 116               |
| MR7M        | 215               |
| MR9M        | 301               |
| MR12M       | 602               |
| MR15M       | 930               |

## Dimensions



| Designation | H1  | W1 | D x d x g1      | Hole Pitch (P) |
|-------------|-----|----|-----------------|----------------|
| MR5M        | 3.5 | 5  | 3.5 x 2.4 x 1   | 15             |
| MR7M        | 4.7 | 7  | 4.2 x 2.4 x 2.3 | 15             |
| MR9M        | 5.5 | 9  | 6 x 3.5 x 3.5   | 20             |
| MR12M       | 7.5 | 12 | 6 x 3.5 x 4.5   | 25             |
| MR15M       | 9.5 | 15 | 6 x 3.5 x 4.5   | 40             |