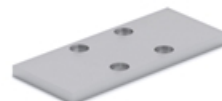


Adapter Plate for RCS Clamping Element

Because of the height difference of different rail guide blocks and to ensure the proper function of the RCS Clamping Elements, the use of adapter plates is sometimes needed. See "Clamping Elements and Accessories" for individual block types and whether an adapter plate is needed.

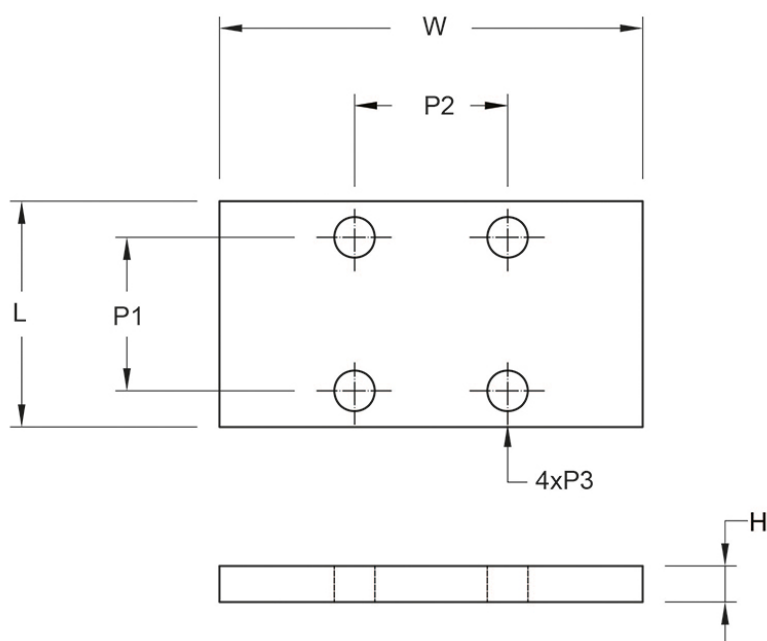
Dimensions in mm.



General Data

Designation	Compatible with	Remark
RCP15-4	RCS15	Use Distance Plate RCP15-4 for SBI15SL
RCP20-2	RCS20	Use Distance Plate RCP20-2 for SBI20FL, SBI20SL, SBI20FLL, SBI20SLL
RCP25-4	RCS25	Use Distance Plate RCP25-4 for SBI25SL, SBI25SLL
RCP30-3	RCS30	Use Distance Plate RCP30-3 for SBI30SL, SBI30SLL
RCP35-7	RCS35	Use Distance Plate RCP35-7 for SBI35SL, SBI35SLL

Dimensions



Designation	H	L	P1	P2	P3	W
RCP15-4	4	25	17	17	4.5	47
RCP20-2	2	24	15	15	5.5	60
RCP25-4	4	30	20	20	6.5	70
RCP30-3	3	39	22	22	6.5	90
RCP35-7	7	39	24	24	8.5	100