

Adapter Plate for MK & MKS Clamping Elements

Because of the height difference of different rail guide blocks and to ensure the proper function of the MK and MKS Clamping Elements, the use of adapter plates is sometimes needed. See "Selection of Clamping Elements" for individual block types and whether an adapter plate is needed.

Compatible with Linear Rail HRC/ARC/ERC only.

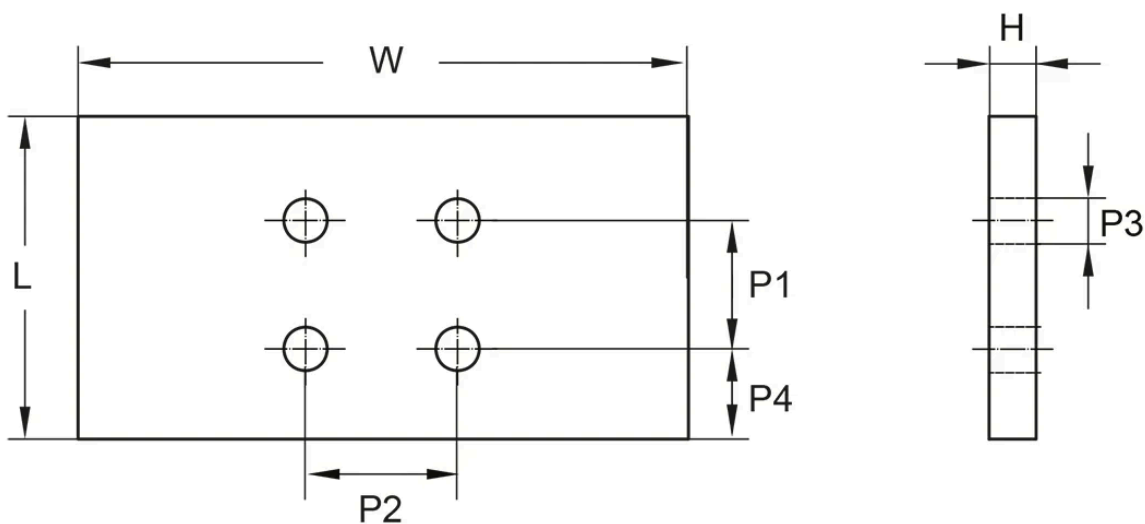
Dimensions in mm.



General Data

Designation	Compatible with	Remark	Recommended screw size	Weight (kg)
PMK15-4	MK1514D, MKS1514D	Use Distance Plate PMK15-4 for HRC15MN	M4	0.065
PMK20-2-A	MK2014D, MKS2014D	Use Distance Plate PMK20-2-A for HRC20FL, HRC20FN, HRC20ML, HRC20MN	M6	0.029
PMK25-4	MK2514D, MKS2514D	Use Distance Plate PMK25-4 for HRC25ML, HRC25MN	M6	0.078
PMK30-3	MK3005A, MKS3005A	Use Distance Plate PMK30-3 for HRC30ML, HRC30MN	M8	0.077
PMK35-7	MK3514D, MKS3514D	Use Distance Plate PMK35-7 for HRC35ML, HRC35MN	M8	0.2
PMK45-10	MK4514D, MKS4514D	Use Distance Plate PMK45-10 for HRC45ML, HRC45MN	M10	0.43

Dimensions



Designation	H	L	P1	P2	P3	P4	W
PMK15-4	4	39	15	15	4.5	15.5	55
PMK20-2-A	2	30	20	20	6.5	5	66
PMK25-4	4	35	20	20	6.5	5	75
PMK30-3	3	39	22	22	8.5	8.5	90
PMK35-7	7	39	24	24	8.5	7.5	100
PMK45-10	10	49	26	26	10.5	11.5	120