

BQ---.1000

- The fixing element is welded with the respective combined roller
- Special dimensions on request.

* For L measurement, see respective roller.

Order example: Roller + Mounting plate

TR070.0200/BQ1000

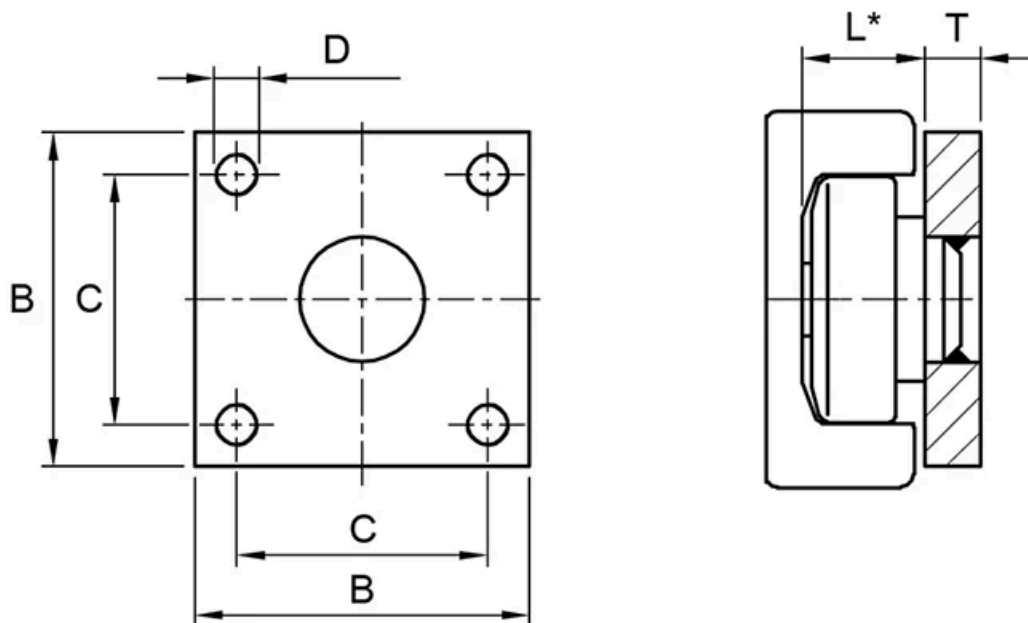
Roller, combined, fixed, Ø 70,1 mm - welded with mounting plate 120 x 80 x 15 mm

Dimensions in mm.





Dimensions



| Designation | Remark | B | D | C | T |
|-------------|--|-----|-----|-----|----|
| 50-BQ1000 | Roller: TR050.---, Plate: BQ1000, Distance sheet: BQ050.1405, BQ050.1410 | 60 | M8 | 40 | 10 |
| 60-BQ1000 | Roller: TR060.--- / XTR060---, Plate: BQ1000, Distance sheet: BQ060.1405, BQ060.1410 | 70 | M10 | 50 | 12 |
| 70-BQ1000 | Roller: TR070.--- / XTR070---, Plate: BQ1000, Distance sheet: BQ070.1405, BQ070.1410 | 80 | M12 | 60 | 15 |
| 80-BQ1000 | Roller: TR080.--- / XTR080---, Plate: BQ1000, Distance sheet: BQ080.1405, BQ080.1410 | 100 | M12 | 70 | 15 |
| 90-BQ1000 | Roller: TR090.--- / XTR090---, Plate: BQ1000, Distance sheet: BQ090.1405, BQ090.1410 | 120 | M16 | 90 | 20 |
| 110-BQ1000 | Roller: TR110.--- / XTR110---, Plate: BQ1000, Distance sheet: BQ110.1405, BQ110.1410 | 140 | M16 | 100 | 20 |
| 120-BQ1000 | Roller: TR120.--- / XTR120---, Plate: BQ1000, Distance sheet: BQ120.1405, BQ120.1410 | 140 | M16 | 100 | 20 |
| 150-BQ1000 | Roller: TR150.--- / XTR150---, Plate: BQ1000, Distance sheet: BQ150.1405, BQ150.1410 | 160 | M16 | 120 | 25 |
| 180-BQ1000 | Roller: TR180.---, Plate: BQ1000, Distance sheet: BQ180.1405, BQ180.1410 | 200 | M20 | 150 | 30 |