

Motor adapter VK

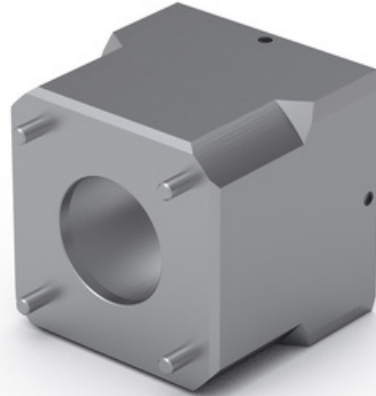
For Mini Linear Units MGBS & MGTB.

The standard motor adapter VK is made out of one piece. It is important to note when ordering it, that the coupling is included.

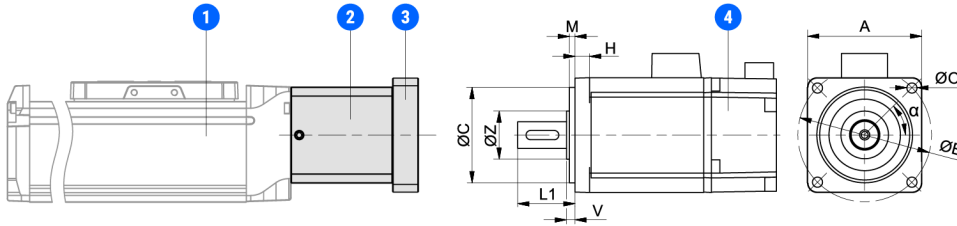
Note! If you order a custom motor adapter VK for a non-standard motor the coupling is not included.

□ = Square cross section

Dimensions in mm.



General Data



1. MGBS/MGTB
 2. Motor adapter housing
 3. Motor adapter flange
 4. Motor
- Motor adapter VK

Designation	Compatible with	Motor Type	Motor Size (mm)	Motor Standard	Motor Shaft Length L1 Min. (mm)
VK 32 - T1 - 108257	MGBS/MGTB 32, Coupling EKL 2	Stepper	28	NEMA 11	15
VK 32 - T2 - 108258	MGBS/MGTB 32, Coupling EKL 2	Stepper	42	NEMA 17	20
VK 45 - T1 - 108259	MGBS/MGTB 45, Coupling EKL 5	Stepper	42	NEMA 17	20
VK 45 - T2 - 108260	MGBS/MGTB 45, Coupling EKL 5	Stepper	56	NEMA 23	20
VK 60 - T1 - 112537	MGBS/MGTB 60, Coupling EKL 10	Stepper	56	NEMA 23	20
VK 60 - T2 - 112536	MGBS/MGTB 60, Coupling EKL 10	Stepper	86	NEMA 34	32

Designation	Motor Shaft Length L1 Max. (mm)	Motor Shaft Diameter (mm)	Motor Mounting Holes ØO × H (mm)	Mass (kg)
VK 32 - T1 - 108257	20	5.0	M2.5 × 2.5 (min.)	0.06
VK 32 - T2 - 108258	25	5.0	M3 × 4.5 (min.)	0.09
VK 45 - T1 - 108259	25	6.35	M3 × 4.5 (min.)	0.14
VK 45 - T2 - 108260	25	6.35	5 × 9.0 (max.)	0.18
VK 60 - T1 - 112537	25	6.35	5 × 9.0 (max.)	0.36
VK 60 - T2 - 112536	37	14	7 × 10.0 (max.)	0.58