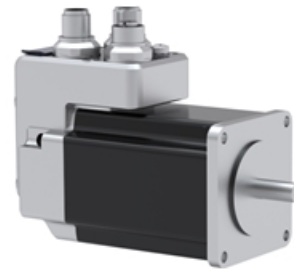


## PSD 42 - Shaft 8 mm solid

- Software features: spindle compensation drive, increased breakaway performance, synchronized run
- Software modules for IO-Link: changeover of parameter set, target speed in process data and modulo function
- Protection of internal electronics against manual operation
- Space-saving, compact design
- Galvanically separated supply voltages between control and motor and bus
- Precise position feedback thanks to an absolute measurement system without battery
- Optional gearbox for more torque
- Address may be set using the bus or an address switch (not for IO-Link)
- Status LEDs visible from the outside



Self-holding torque below at approx. 100 mA supply current and 1,2 A phase current, currentless 0 Nm.

Dimensions in mm.

See link Manual(s) for documentation and software.

**Type:** Horizontal

**Nominal Torque (Nm):** 2

**Nominal Speed (rpm):** 200

**Nominal Voltage (V DC):** 24 ( $\pm 10\%$ )

**Nominal Current (A):** 4.0

**Output Shaft (mm):** 8

**Output Shaft Type:** Solid

**Rotation Shaft / Housing:** Direct or  $0^\circ$

**BUS Communication:** Can Open (CA); IO-Link (IO); ProfiNet (PN); EtherCat (EC); Ethernet IP (EI)

**Electrical connection:** 0: Standard

**Protection Class:** IP50; IP65

**Motor:** Stepper motor

**Supply Voltage:** 24 V DC  $\pm 10\%$  galvanically separated between motor and control

**Measurement System:** Absolute without battery

**Accuracy:** " $\pm 0.7^\circ$  for versions with gearbox;  $\pm 1.8^\circ$  for versions without gearbox"

**Intermittence:** Start-up duration up to 30%

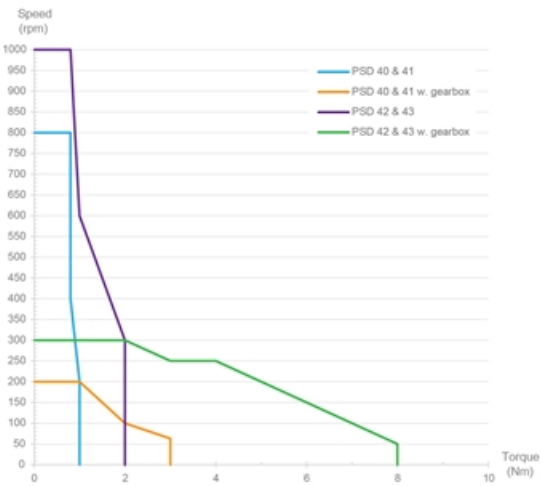
**Manual Adjustment:** No

**Brake:** No



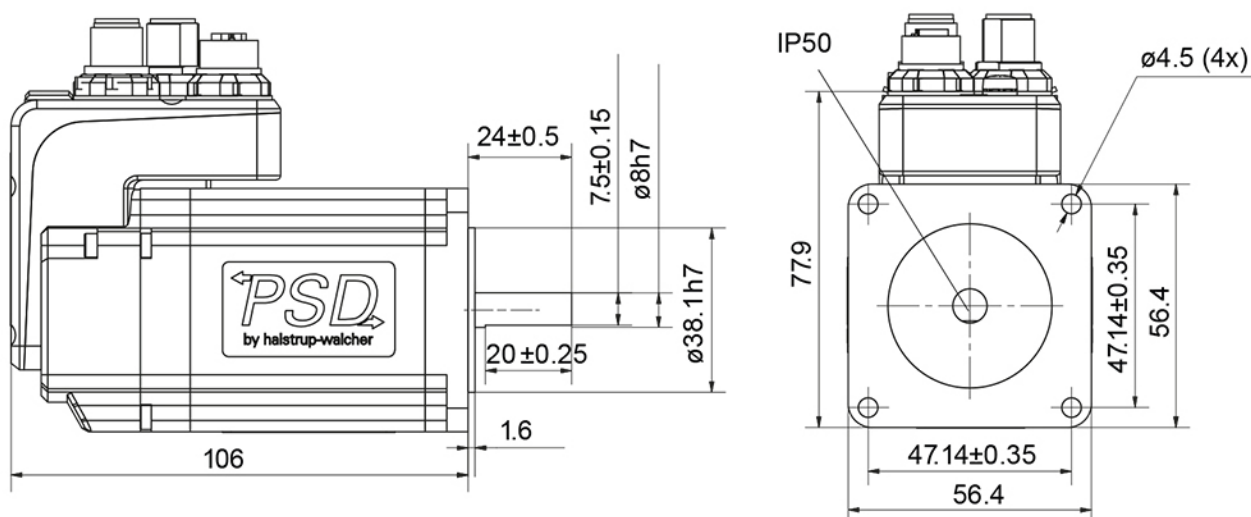
# PSD 42 - Shaft 8 mm solid

Performance Curve - Direct Drives PSD



## General Data

### PSD 422-8V (solid shaft)



Designation	Nominal Torque (Nm)	Nominal Speed (rpm)	Nominal Current (A)	Self-holding Torque (Nm)	Max. Speed (rpm)
PSD 422-8V	2	200	4.0	1	1000

Designation	Positioning Range (rot.)
PSD 422-8V	4026