

Table of contents

- CP planetary gearbox
- CPS planetary gearbox
- CPSK bevel gearbox
- CPK bevel gearbox
- NP planetary gearbox
- NPL planetary gearbox
- NPS planetary gearbox
- NPK bevel gearbox
- NPLK bevel gearbox
- NPSK bevel gearbox
- Adapter kit RHL

CP planetary gearbox

Economical entry level planetary gearbox with impressive price-performance and quality. CP offers a simple and compact B14 output interface with smooth shaft or with a keyway. The stated maximal backlash is kept throughout the lifetime of the gearbox.

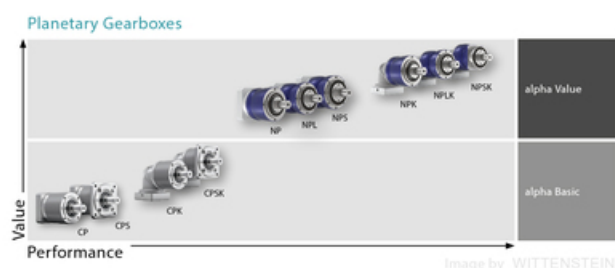
Ratio: 3-100

Max. Torque (Nm): 17 - 800

Other models: food-grade lubrication



Image by WITTENSTEIN



General Data

Designation	Ratio	Size
CP005	4 / 5 / 7 / 8 / 10 / 16 / 20 / 25 / 28 / 35 / 40 / 50 / 70 / 100	05
CP015	3 / 4 / 5 / 7 / 8 / 9 / 10 / 12 / 15 / 16 / 20 / 25 / 28 / 30 / 35 / 40 / 50 / 70 / 100	015
CP025	3 / 4 / 5 / 7 / 8 / 9 / 10 / 12 / 15 / 16 / 20 / 25 / 28 / 30 / 35 / 40 / 50 / 70 / 100	025
CP035	3 / 4 / 5 / 7 / 8 / 9 / 10 / 12 / 15 / 16 / 20 / 25 / 28 / 30 / 35 / 40 / 50 / 70 / 100	035
CP045	5 / 8 / 10 / 25 / 50 / 100	045

CPS planetary gearbox

Economical entry level planetary gearbox with impressive price-performance and quality. CPK offers a long, cylindrical output interface with an optional B5-style flange. Output shaft smooth or with a keyway. The stated maximal backlash is kept throughout the lifetime of the gearbox

Ratio: 3-100

Max. Torque (Nm): 48-272

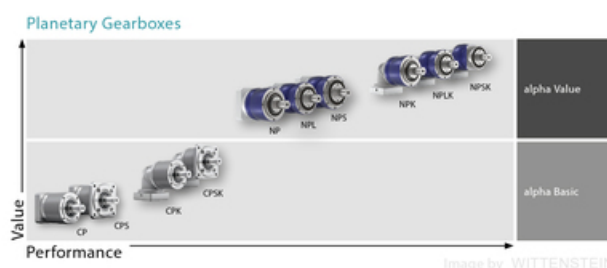
Other models: food-grade lubrication



Image by WITTENSTEIN



Image by WITTENSTEIN



General Data

Designation	Ratio	Remark	Size
CPS015	3 / 4 / 5 / 7 / 8 / 9 / 10 / 12 / 15 / 16 / 20 / 25 / 28 / 30 / 35 / 40 / 50 / 70 / 100	Compatible with Linear unit RHL80 + Adapter kit RHL80	015
CPS025	3 / 4 / 5 / 7 / 8 / 9 / 10 / 12 / 15 / 16 / 20 / 25 / 28 / 30 / 35 / 40 / 50 / 70 / 100	-	025
CPS035	3 / 4 / 5 / 7 / 8 / 9 / 10 / 12 / 15 / 16 / 20 / 25 / 28 / 30 / 35 / 40 / 50 / 70 / 100	Compatible with Linear unit RHL110+ Adapter kit RHL110	035

CPSK bevel gearbox

The right-angle gearboxes of the alpha Basic Line are specially designed for applications with medium requirements for positioning accuracy. The extremely compact bevel gear stage enables use in applications with space constraints.

Ratio: 3-100

Max. Torque (Nm): 33-272

Other models: food-grade lubrication



Image by WITTENSTEIN

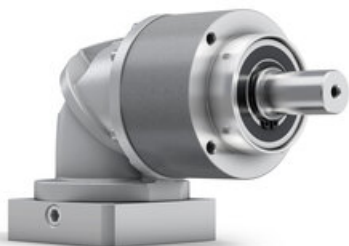
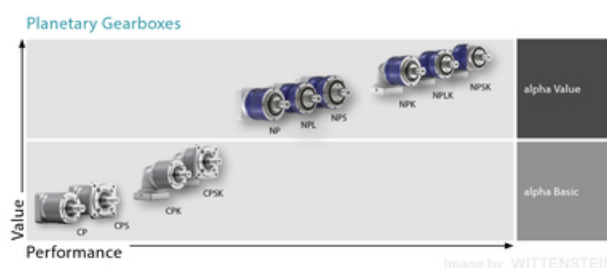


Image by WITTENSTEIN



General Data

Designation	Ratio	Remark	Size
CPSK015	3 / 4 / 5 / 7 / 8 / 9 / 10 / 12 / 15 / 16 / 20 / 25 / 28 / 30 / 35 / 40 / 50 / 70 / 100	Compatible with Linear unit RHL80 + Adapter kit RHL80	015
CPSK025	3 / 4 / 5 / 7 / 8 / 9 / 10 / 12 / 15 / 16 / 20 / 25 / 28 / 30 / 35 / 40 / 50 / 70 / 100	-	025
CPSK035	3 / 4 / 5 / 7 / 8 / 9 / 10 / 12 / 15 / 16 / 20 / 25 / 28 / 30 / 35 / 40 / 50 / 70 / 100	Compatible with Linear unit RHL110 + Adapter kit RHL100	035

CPK bevel gearbox

The most economical right-angle planetary gearbox. Based on the CP gearbox with an additional bevel-gear input stage. Used where space-constraints does not allow an in-line assembly with the motor. The stated maximal backlash is kept throughout the lifetime of the gearbox.

Ratio: 3-100

Max. Torque (Nm): 14 - 700

Other models: food-grade lubrication

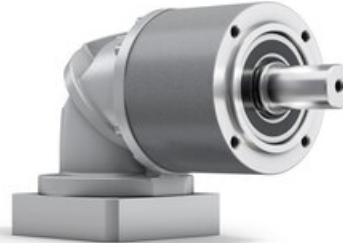
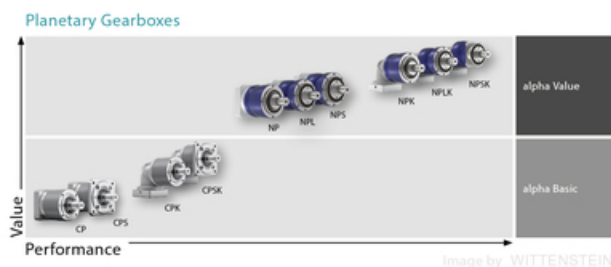


Image by WITTENSTEIN



General Data

Designation	Ratio	Size
CPK005	4 / 5 / 7 / 8 / 10 / 16 / 20 / 25 / 28 / 35 / 40	005
CPK015	3 / 4 / 5 / 7 / 8 / 9 / 10 / 12 / 15 / 16 / 20 / 25 / 28 / 30 / 35 / 40 / 50 / 70 / 100	015
CPK025	3 / 4 / 5 / 7 / 8 / 9 / 10 / 12 / 15 / 16 / 20 / 25 / 28 / 30 / 35 / 40 / 50 / 70 / 100	025
CPK035	3 / 4 / 5 / 7 / 8 / 9 / 10 / 12 / 15 / 16 / 20 / 25 / 28 / 30 / 35 / 40 / 50 / 70 / 100	035
CPK045	5 / 8 / 10 / 25 / 50 / 100	045

NP planetary gearbox

Universally suitable gearbox from alpha Value Line with the best price-performance level. With LP+ B14 output geometry. Smooth or keyed output shaft. Optional available in High Torque execution for ratio 3:1 and 4:1 and products thereof for 2-stage gears. The stated maximal backlash is kept throughout the lifetime of the gearbox. Contact Rollco for CAD-files.

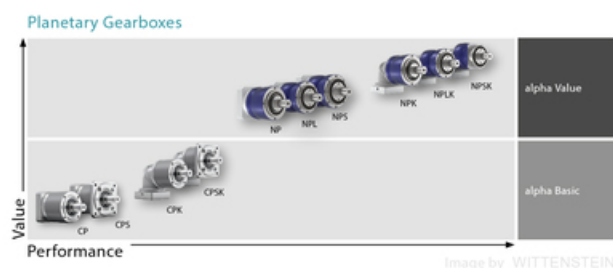
Ratio: 3-100

Max. Torque (Nm): 18 - 800

Other models: food-grade lubrication



Image by WITTENSTEIN



General Data

Designation	Ratio	Size
NP005	4 / 5 / 7 / 8 / 10 / 16 / 20 / 25 / 28 / 35 / 40 / 50 / 64 / 70 / 100	005
NP015	3 / 4 / 5 / 7 / 8 / 10 / 12 / 15 / 16 / 20 / 25 / 28 / 30 / 32 / 35 / 40 / 50 / 64 / 70 / 100 (Gearbox model Standard)	015
NP025	3 / 4 / 5 / 7 / 8 / 9 / 10 / 12 / 15 / 16 / 20 / 25 / 28 / 30 / 32 / 35 / 40 / 50 / 64 / 70 / 100 (Gearbox model Standard)	025
NP035	3 / 4 / 5 / 7 / 8 / 9 / 10 / 12 / 15 / 16 / 20 / 25 / 28 / 30 / 32 / 35 / 40 / 50 / 64 / 70 / 100 (Gearbox model Standard)	035
NP045	5 / 8 / 10 / 25 / 32 / 50 / 64 / 100	045

NPL planetary gearbox

Universally suitable gearbox from alpha Value Line. With LP+ B14 output geometry. Smooth or keyed cylindrical output shaft or DIN 5480 involute splined shaft. Reinforced output bearings enable applications with high radial and axial shaft loads. Optional available in High Torque execution for ratio 3:1 and 4:1 and products thereof for 2-stage gears. The stated maximal backlash is kept throughout the lifetime of the gearbox. Contact Rollco for CAD-files.

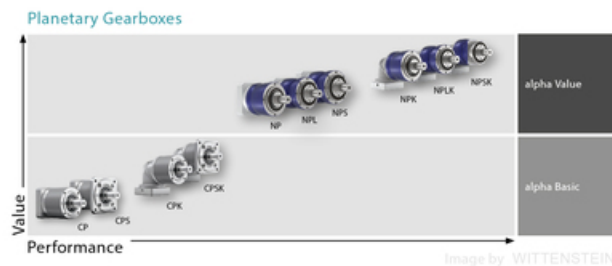
Ratio: 3-100

Max. Torque (Nm): 51 - 800

Other models: food-grade lubrication



Image by WITTENSTEIN



General Data

Designation	Ratio	Size
NPL015	3 / 4 / 5 / 7 / 8 / 10 / 12 / 15 / 16 / 20 / 25 / 28 / 30 / 32 / 35 / 40 / 50 / 64 / 70 / 100 (Gearbox model Standard)	015
NPL025	3 / 4 / 5 / 7 / 8 / 9 / 10 / 12 / 15 / 16 / 20 / 25 / 28 / 30 / 32 / 35 / 40 / 50 / 64 / 70 / 100 (Gearbox model Standard)	025
NPL035	3 / 4 / 5 / 7 / 8 / 9 / 10 / 12 / 15 / 16 / 20 / 25 / 28 / 30 / 32 / 35 / 40 / 50 / 64 / 70 / 100 (Gearbox model Standard)	035
NPL045	5 / 8 / 10 / 25 / 32 / 50 / 64 / 100	045

NPS planetary gearbox

Universally suitable gearbox from alpha Value Line with the best price-performance level. With SP+ B5 output geometry. Smooth or keyed cylindrical output shaft or DIN 5480 involute splined shaft. Reinforced output bearings enable applications with high radial and axial shaft loads. Optional available in High Torque execution for ratio 3:1 and 4:1 and products thereof for 2-stage gears. The stated maximal backlash is kept throughout the lifetime of the gearbox.

Contact Rollco for CAD-files.

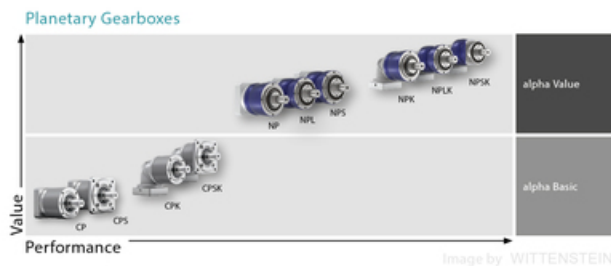
Ratio: 3-100

Max. Torque (Nm): 51 - 800

Other models: food-grade lubrication



Image by WITTENSTEIN



General Data

Designation	Ratio	Size
NPS015	3 / 4 / 5 / 7 / 8 / 10 / 12 / 15 / 16 / 20 / 25 / 28 / 30 / 32 / 35 / 40 / 50 / 64 / 70 / 100 (Gearbox model standard)	015
NPS025	3 / 4 / 5 / 7 / 8 / 9 / 10 / 12 / 15 / 16 / 20 / 25 / 28 / 30 / 32 / 35 / 40 / 50 / 64 / 70 / 100 (Gearbox model standard)	025
NPS035	3 / 4 / 5 / 7 / 8 / 9 / 10 / 12 / 15 / 16 / 20 / 25 / 28 / 30 / 32 / 35 / 40 / 50 / 64 / 70 / 100 (Gearbox model standard)	035
NPS045	5 / 8 / 10 / 25 / 32 / 50 / 64 / 100	045

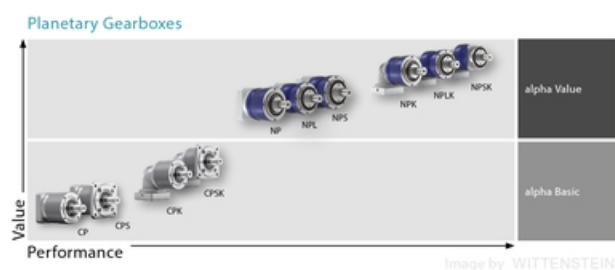
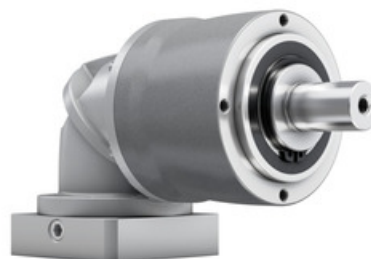
NPK bevel gearbox

Versatile right-angle planetary gearbox. Based on the NP gearbox with an additional bevel-gear input stage. Used where space-constraints does not allow an in-line assembly with the motor. With LP+ B14 output geometry. Smooth or keyed output shaft. The stated maximal backlash is kept throughout the lifetime of the gearbox. Contact Rollco for CAD-files.

Ratio: 3-100

Max. Torque (Nm): 14 - 700

Other models: food-grade lubrication



General Data

Designation	Ratio	Size
NPK005	4/5/7/8/10/16/20/25/28/35/40/50/64/70/100 (Gearbox model Standard)	005
NPK015	3/4/5/7/8/10/12/15/16/20/25/28/30/32/35/40/50/64/70/100 (Gearbox model Standard)	015
NPK025	3/4/5/7/8/9/10/12/15/16/20/25/28/30/32/35/40/50/64/70/100 (Gearbox model Standard)	025
NPK035	3/4/5/7/8/9/10/12/15/16/20/25/28/30/32/35/40/50/64/70/100 (Gearbox model Standard)	035
NPK045	5/8/10/25/32/50/64/100 (Gearbox model Standard)	045

NPLK bevel gearbox

Versatile right-angle planetary gearbox. Based on the NPL gearbox with an additional bevel-gear input stage. Used where space-constraints does not allow an in-line assembly with the motor. With LP+ B14 output geometry. Smooth or keyed cylindrical output shaft or DIN 5480 involute splined shaft. Reinforced output bearings enable applications with high radial and axial shaft loads. The stated maximal backlash is kept throughout the lifetime of the gearbox.

Contact Rollco for CAD-files.

Ratio: 3-100

Max. Torque (Nm): 33 - 700

Other models: food-grade lubrication

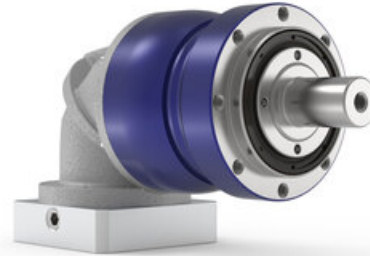
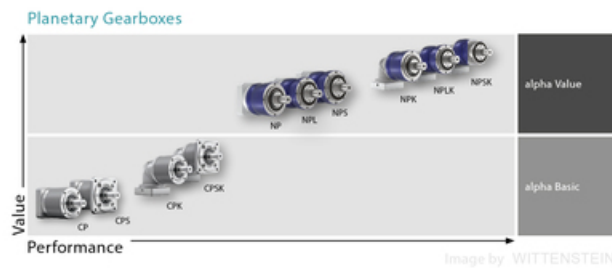


Image by WITTENSTEIN



General Data

Designation	Ratio	Size
NPLK015	3 / 4 / 5 / 7 / 8 / 10 / 12 / 15 / 16 / 20 / 25 / 28 / 30 / 32 / 35 / 40 / 50 / 64 / 70 / 100 (Gearbox model standard)	015
NPLK025	3 / 4 / 5 / 7 / 8 / 9 / 10 / 12 / 15 / 16 / 20 / 25 / 28 / 30 / 32 / 35 / 40 / 50 / 64 / 70 / 100 (Gearbox model standard)	025
NPLK035	3 / 4 / 5 / 7 / 8 / 9 / 10 / 12 / 15 / 16 / 20 / 25 / 28 / 30 / 32 / 35 / 40 / 50 / 64 / 70 / 100 (Gearbox model standard)	035
NPLK045	5 / 8 / 10 / 25 / 32 / 50 / 64 / 100 (Gearbox model standard)	045

NPSK bevel gearbox

Versatile right-angle planetary gearbox. Based on the NPL gearbox with an additional bevel-gear input stage. Used where space-constraints does not allow an in-line assembly with the motor. With SP+ B5 output geometry. Smooth or keyed cylindrical output shaft or DIN 5480 involute splined shaft. Reinforced output bearings enable applications with high radial and axial shaft loads. The stated maximal backlash is kept throughout the lifetime of the gearbox.

Contact Rollco for CAD-files.

Ratio: 3-100

Max. Torque (Nm): 33 - 700

Other models: food-grade lubrication

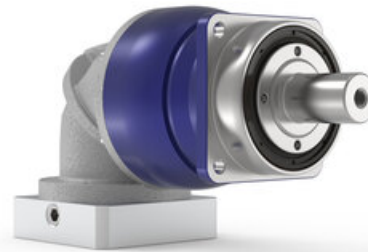
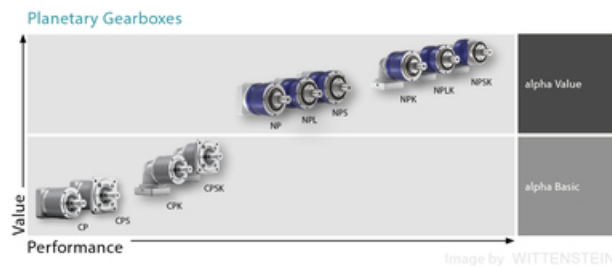


Image by WITTENSTEIN

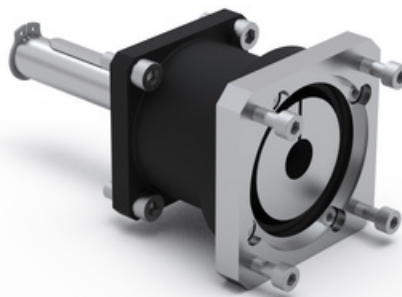


General Data

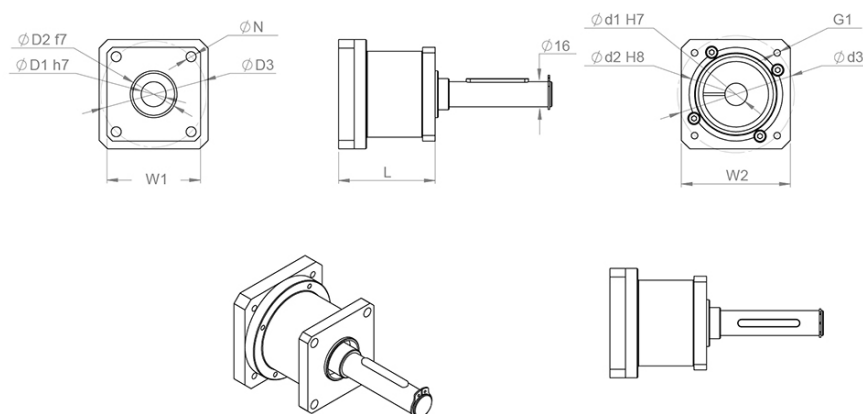
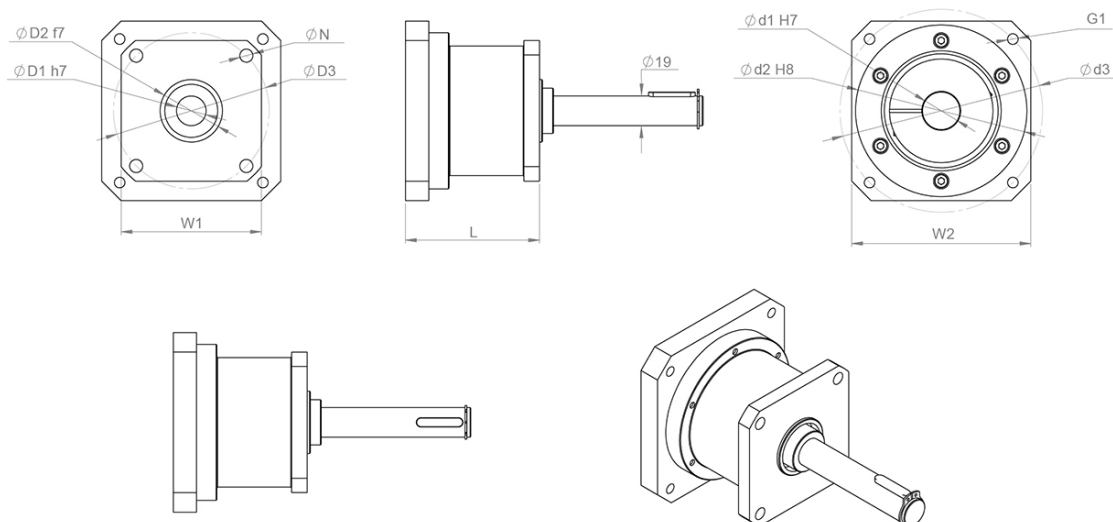
Designation	Ratio	Size
NPSK015	3 / 4 / 5 / 7 / 8 / 10 / 12 / 15 / 16 / 20 / 25 / 28 / 30 / 32 / 35 / 40 / 50 / 64 / 70 / 100	015
NPSK025	3 / 4 / 5 / 7 / 8 / 9 / 10 / 12 / 15 / 16 / 20 / 25 / 28 / 30 / 32 / 35 / 40 / 50 / 64 / 70 / 100	025
NPSK035	3 / 4 / 5 / 7 / 8 / 9 / 10 / 12 / 15 / 16 / 20 / 25 / 28 / 30 / 32 / 35 / 40 / 50 / 64 / 70 / 100	035
NPSK045	5 / 8 / 10 / 25 / 32 / 50 / 64 / 100	045

Adapter kit RHL

Easily connect your RHL Linear unit with a planetary gear by using our adapter-kit. Design your complete solution of RHL Linear unit + Adapter kit + Planetary gear with our CAD-Configurator.



General Data

RHL80

RHL110


Designation	Compatible with	D1	D2	D3	G1
RHL80-H16-CPS015 Adapter kit	RHL80	14	60	75	M5
RHL110-H19-CPS035 Adapter kit	RHL110	24	110	130	M8

Designation	N1	L	W1	W2
RHL80-H16-CPS015 Adapter kit	6.4	62	60x60	70x70
RHL110-H19-CPS035 Adapter kit	8.4	86	90x90	115x115

