

## Cube Connector

Links up to three aluminium profiles at a right angle, use the caps to cover the holes.

Cube connector material: Die-cast aluminium

Cap material: Plastic (PE)

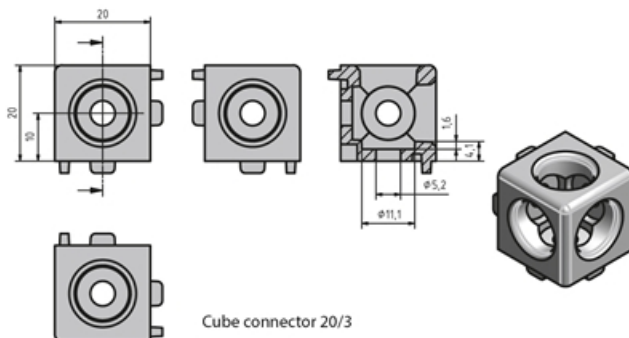
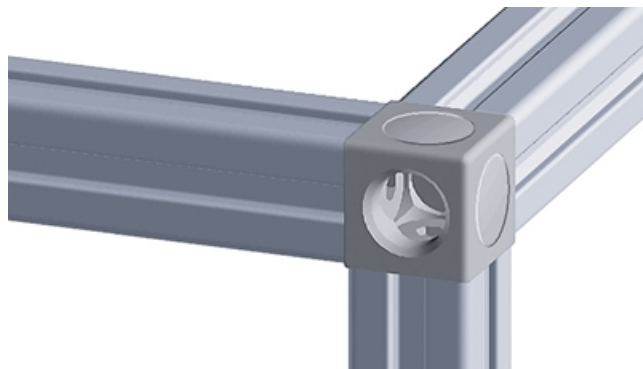
Mounting material WV20: M5 × 14 pan head screw (ISO7380)

Mounting material WV40: M8 × 25 countersunk screw (DIN7991)

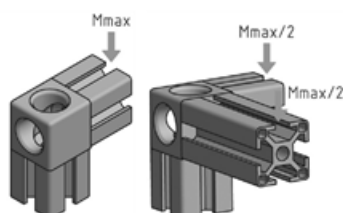
Note: The caps in the sets are not ESD-ready.

**System:** 20 - Slot 5

**Type:** Fasteners

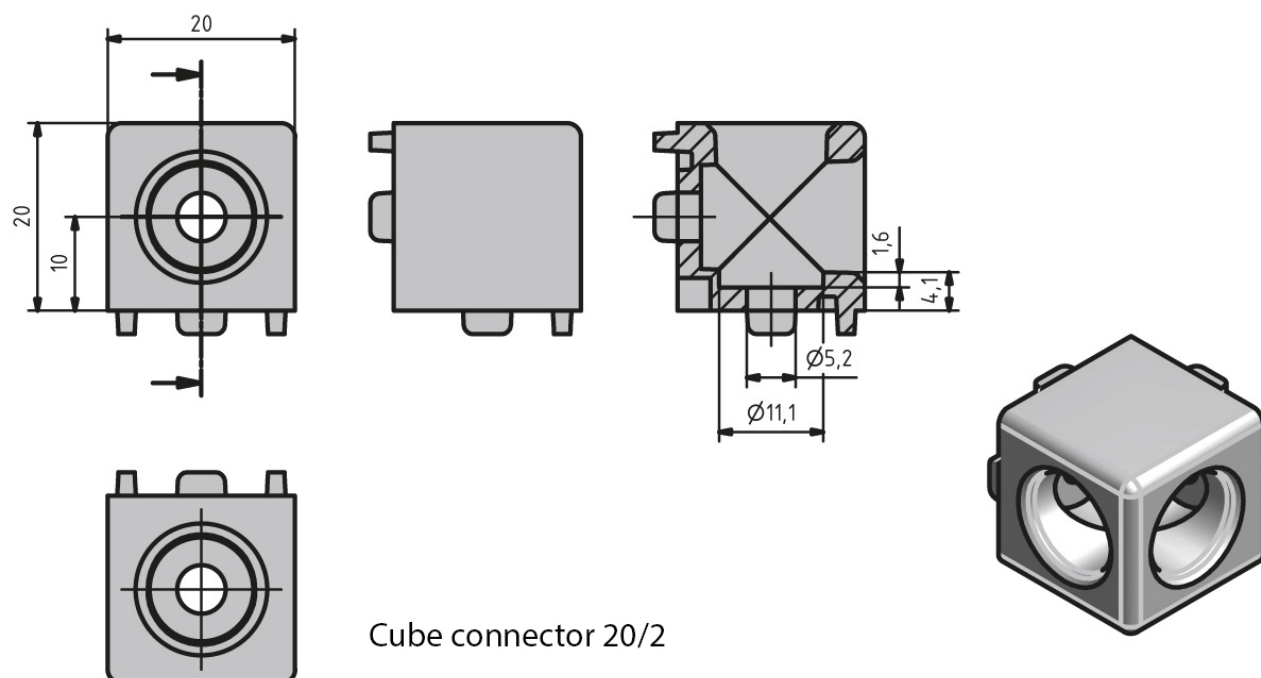


### Cube connector 20 loads



Type	Mmax (Nm)	Mmax/2 (Nm)
Cube connector 20/2	15	
Cube connector 20/3		18

## General Data



Cube connector 20/2

Designation	Description	System	ESD
<b>PV1224</b>	Cube connector 20/2, uncoated aluminium, 2 black PE caps and mounting kit included	20 - Slot 5	Yes
<b>PV1225</b>	Cube connector 20/2, silver coated aluminium, 2 silver PE caps and mounting kit included	20 - Slot 5	-
<b>PV1226</b>	Cube connector 20/3, uncoated aluminium, 3 black PE caps and mounting kit included	20 - Slot 5	Yes
<b>PV1227</b>	Cube connector 20/3, silver coated aluminium, 3 silver PE caps and mounting kit included	20 - Slot 5	-
<b>PA1211</b>	Black cap for cube connector 20	20 - Slot 5	-
<b>PA1212</b>	Silver cap for cube connector 20	20 - Slot 5	-