

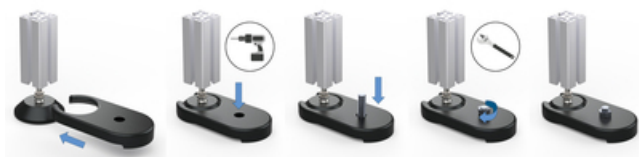
## Floor Mount for Trapezoid Base

To fix the Adjustable Feet Trapezoid Base 60 and 80 to the floor.

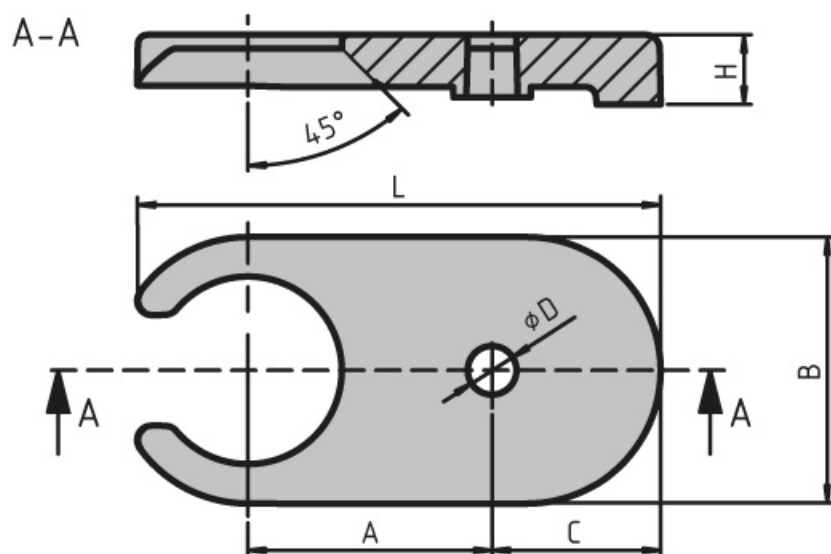
Material: Die-cast zinc with a black powder coat

**System:** 40 - Slot 8; 30 - Slot 6; 20 - Slot 5

**Type:** Feet



## General Data



Designation	Description	A	B	C	D
<b>PZ3135</b>	Floor mount for trapezoid base 60	50	56	38	12
<b>PZ1455</b>	Floor mount for trapezoid base 80	70	76.5	48	14

Designation	H	L
<b>PZ3135</b>	18	110
<b>PZ1455</b>	20	150