

Adjustable Levelling Foot

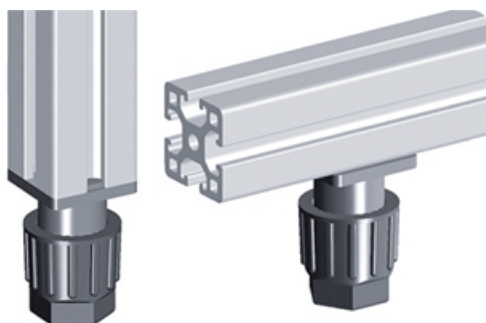
Compact levelling knuckle foot that mounts on aluminium profiles.

Material: Housing: Plastic (PA), fibreglass-reinforced

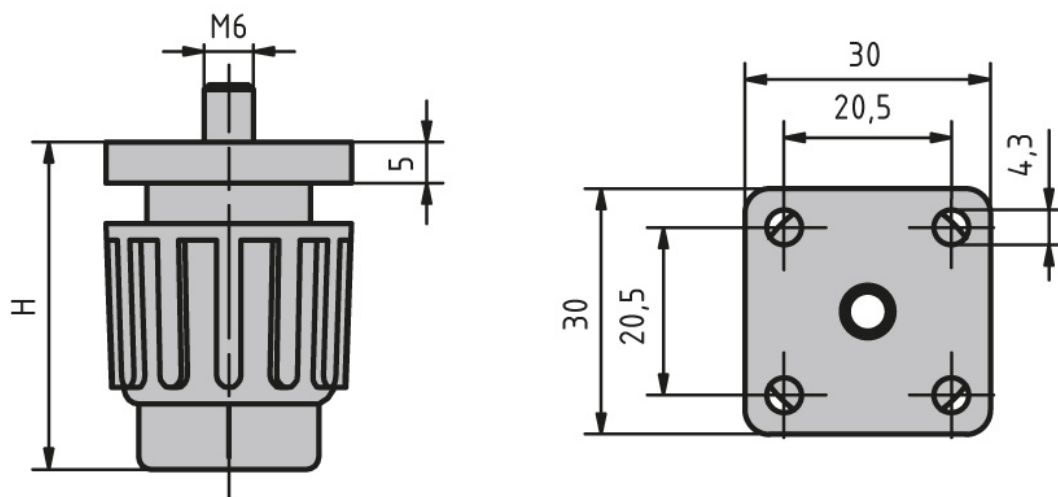
Mechanism: Galvanised steel. Carrying capacity: 150 kg

System: 30 - Slot 6; 20 - Slot 5

Type: Feet



General Data



| Designation | Description | Thread | H | Hole Spacing | Profile |
|---------------|---------------------------|--------|-------|--------------|---------|
| PZ5109 | Adjustable levelling foot | M6 | 35-50 | 20.5 | 30 |