

Levelling Castor

Steerable levelling castor.

Simply push the stop lever to turn the castor into a stable foot pad.

Easy to handle due to the lever's stop position.

Much ground clearance when moving.

Easy foot operation by lever.

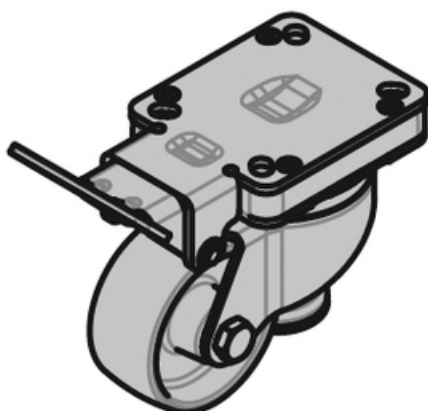
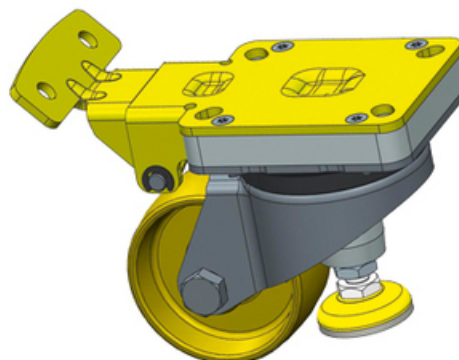
Carrying capacity: 300 kg

Housing: Electrolytically galvanised steel, blue passivated, free from Cr6

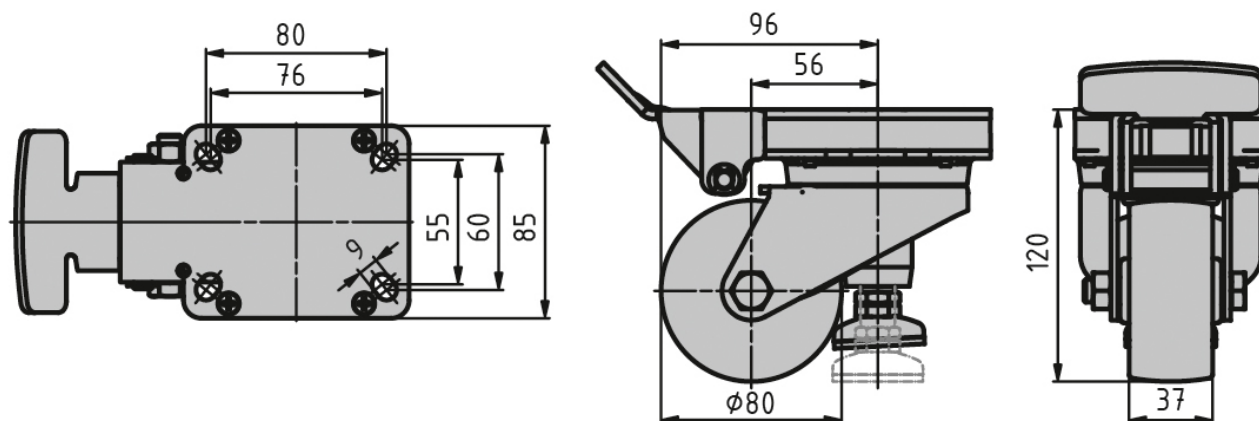
Wheel: PA6, natural white

System: 30 - Slot 6; 20 - Slot 5; 40 - Slot 8

Type: Castors



General Data



Designation	Description
PZ5234	Levelling castor with integrated locking pad, polyamide wheel