

## Table of contents

- **Bracket 30 × 30**
- **Bracket 30 × 60**
- **Angle Set 6 30x30**
- **Steel Angle**
- **Standard Fastener**
- **Universal Connectors**
- **Automatic Connectors**
- **Automatic Butt Connector**
- **Central Fastener 6 Anti-rotate**
- **Pivoting Slot Nut, 10.5 × 6.3 mm**
- **Pivoting Slot Nut, 10.5 × 6.9 mm**
- **Uniblock**
- **Tie Plates**
- **Mounting Angle**
- **Bracket 60 × 60**
- **Corner Angle 30**
- **Angle Element**
- **Articulated Brackets**
- **Clamping Bracket**
- **Universal Butt Connector**
- **Automatic Combination Connector**
- **Pivoting Double Slot Nut, 10.5 mm**
- **Uniblock Spacer**
- **Clamping Pad**
- **Panel Bracket**
- **Earthing Strap**

## Bracket 30 × 30

Material: Bracket: Die-cast zinc, uncoated and silver powder coated.

Cap: Black plastic (PA)

Mounting kit: Galvanised steel

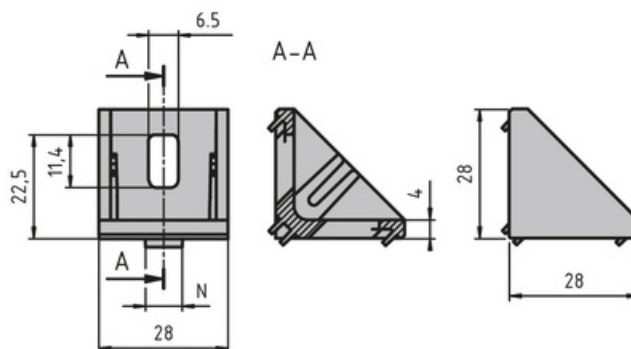
Mounting material:

2× M6 slot 6 slot nuts with step

2× M6 × 14 screw (DIN 7380)

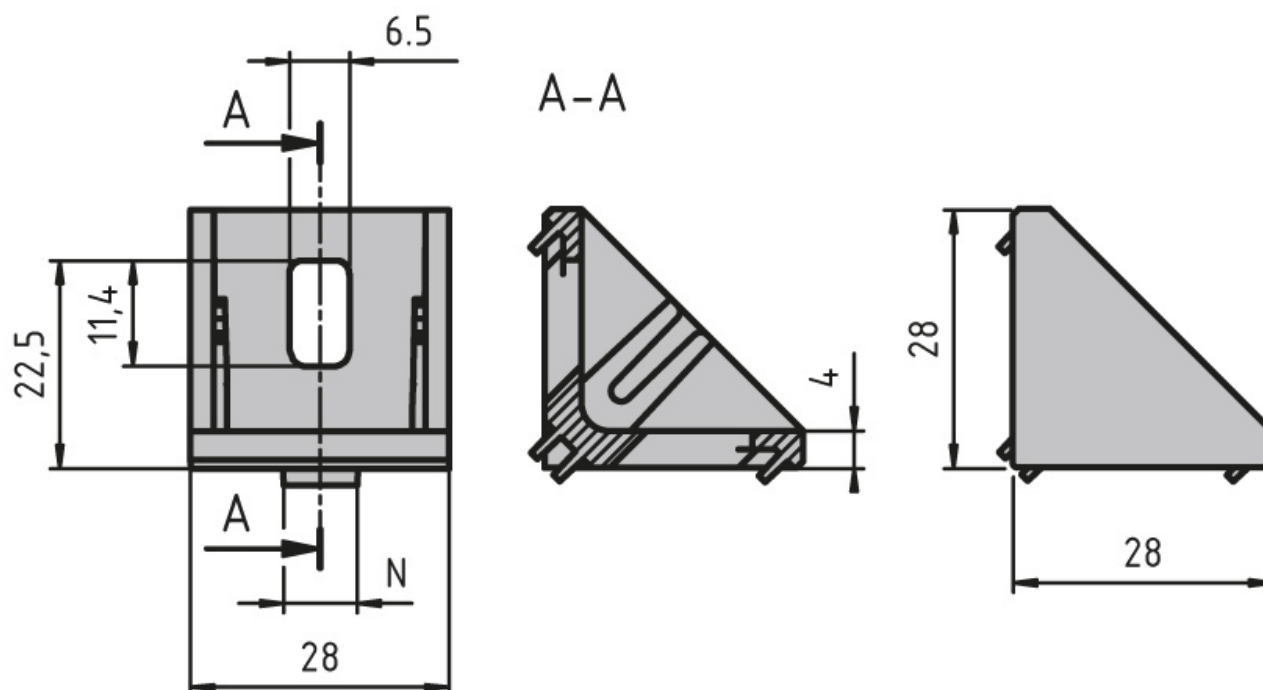
**System:** 30 - Slot 6

**Type:** Angles Brackets and Corners; Fasteners



<b>Fmax (N)</b>	<b>Pmax 1 (Nm)</b>	<b>Pmax 2 (Nm)</b>
800	15	40

## General Data



Designation	Description	System	ESD
PZ5001	Bracket 30 × 30	30 - Slot 6	-
PZ5002	Bracket 30 × 30 with mounting material and ABDK	30 - Slot 6	-
PZ5003	Bracket 30 × 30 silver powder coated with mounting material and ABDK	30 - Slot 6	Yes
PA1202	Cap 30 × 30	30 - Slot 6	-

## Bracket 30 × 60

Material: Bracket: Uncoated die-cast aluminium

Cap: Black plastic (PA)

Mounting kit: Galvanised steel

Mounting kit includes:

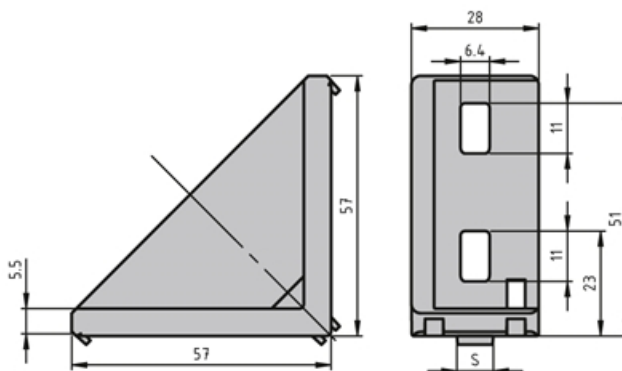
4× slot nut with M6 step

4× M6×14 screw (ISO7380 )

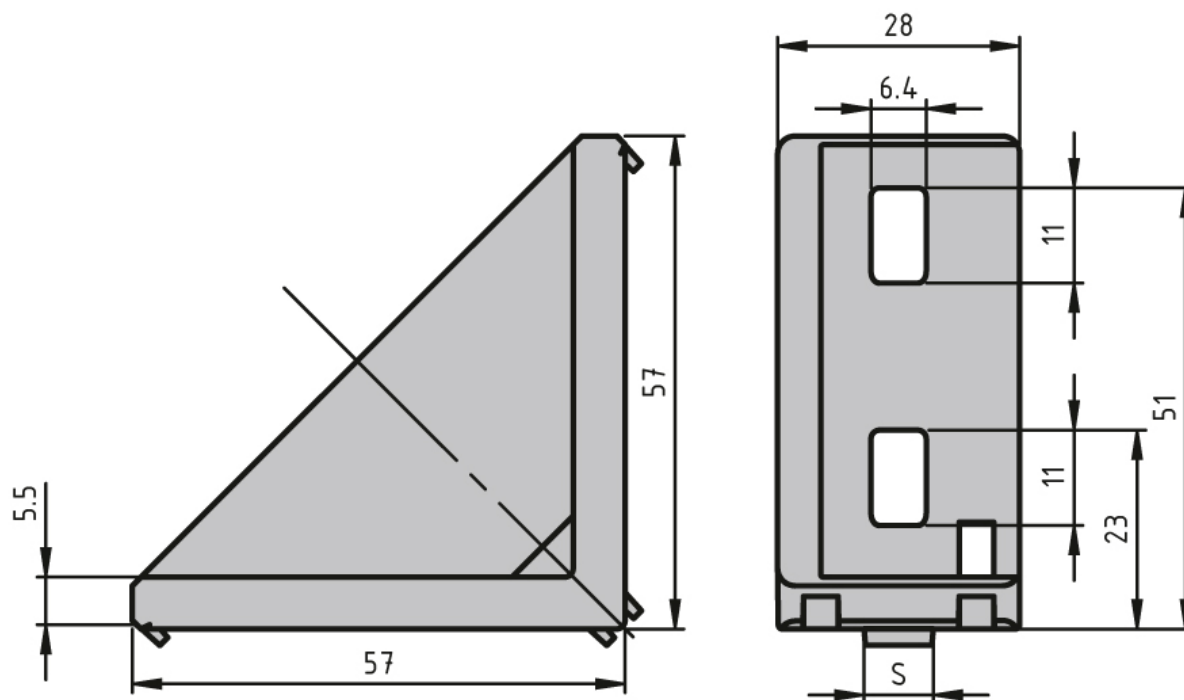
4× washer (DIN 125)

**System:** 30 - Slot 6

**Type:** Angles Brackets and Corners; Fasteners



## General Data



Designation	Description	System	ESD
<b>PZ5004</b>	Bracket 30 × 60 with mounting material and ABDK	30 - Slot 6	Yes

## Angle Set 6 30x30

To connect two aluminum profiles or panels at right angles.

The connection angle can be closed with the cover cap.

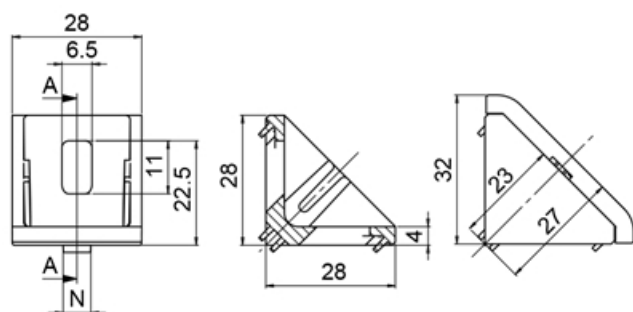
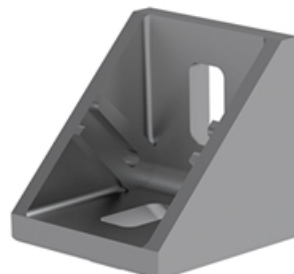
Assembly set includes 1 Cover cap - Plastic PA - black, 2

T-slot nuts - slot 6 - M6, 2 Screws ISO 7380 - M6 × 12

**Material:** Die-cast zinc. Cover cap, plastic PA glass fiber reinforced. Assembly set, steel.

**System:** 30 - Slot 6

**Type:** Angles Brackets and Corners; Fasteners



## General Data

Designation	Description	System	Colour	Weight (g)
<b>PZ3070</b>	Angle Set 6 30x30 Screw M6x12	30 - Slot 6	Cover cap black	68

## Steel Angle

Links two aluminium profiles at a right angle.

Note: To install the ESD-ready angles, use a notched slot nut in order to make a conductive link.

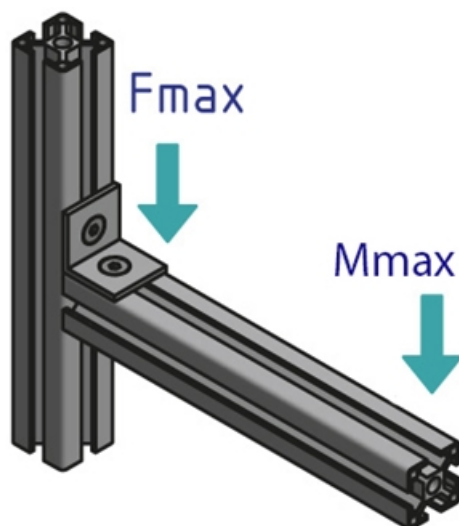
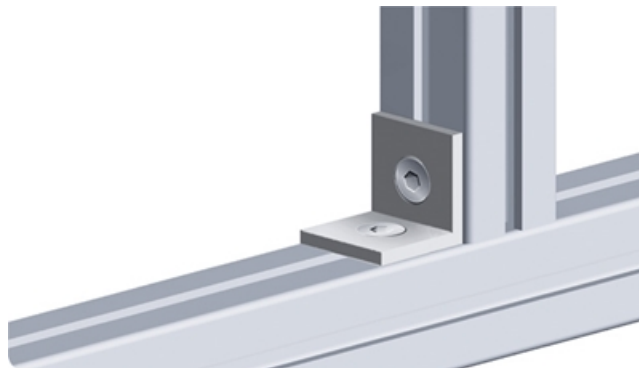
Mounting material On-site construction:

Angle 20: M5 × 8 countersunk screw (DIN7991), M5 slot 5 slot nut

Angle 30: M6 × 10 countersunk screw (DIN7991), M6 slot 6 slot nut

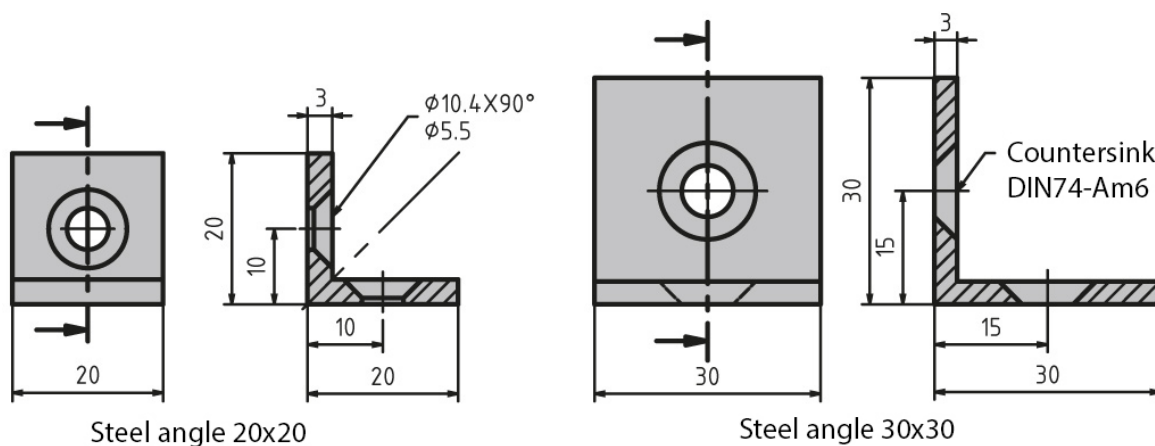
**System:** 30 - Slot 6; 20 - Slot 5

**Type:** Angles Brackets and Corners; Fasteners





## General Data



Designation	System	Material	ESD	Fmax (N)	Mmax (Nm)
<b>PZ4045</b>	20 - Slot 5	Black powder coated steel	-	600	15
<b>PZ3060</b>	30 - Slot 6	Steel, blue galvanised	Yes	1000	25
<b>PZ3050</b>	30 - Slot 6	Black powder coated steel	-	1000	25

## Standard Fastener

Connect two aluminium profiles. Teeth crack the anodised coating and create a reliable and conductive link.

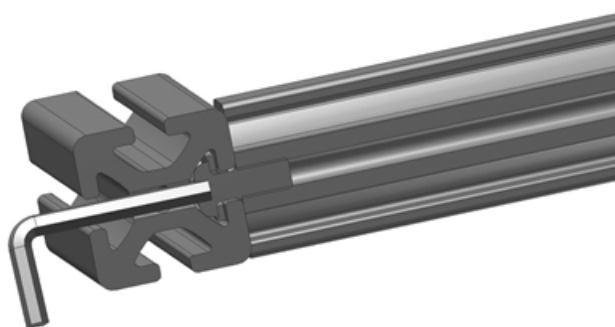
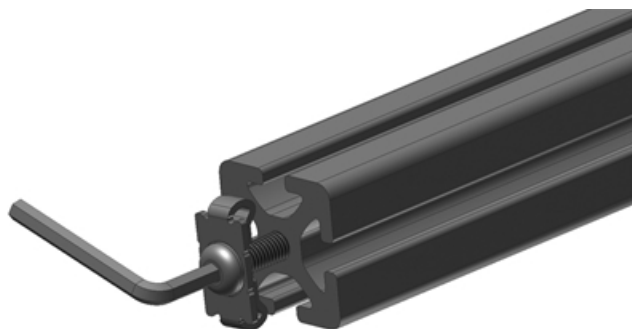
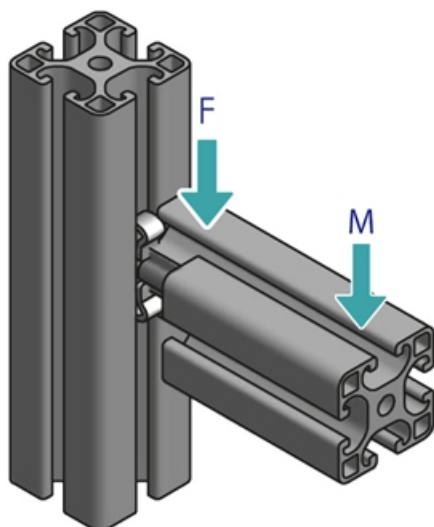
Material Connector: Galvanised or stainless steel

Material Dummy plug: PVC, black

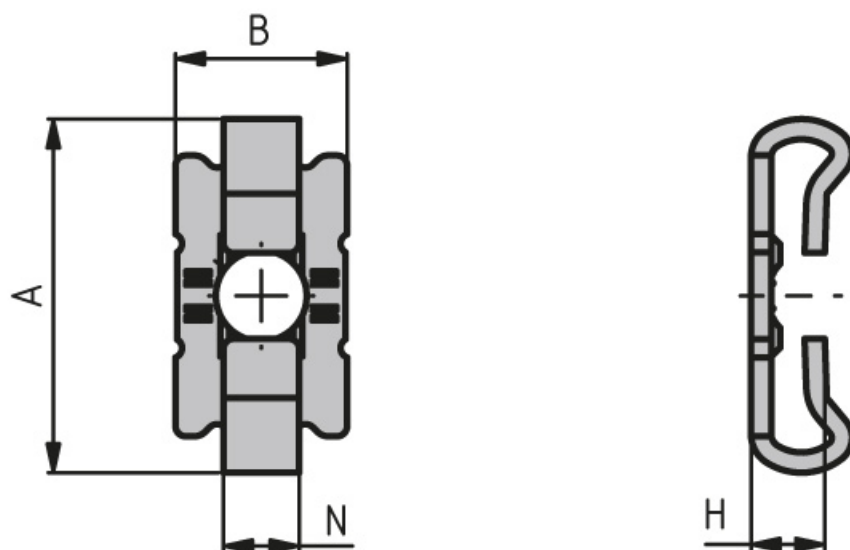
Note: Use the dummy plugs to close the drill hole in closed slots

**System:** 30 - Slot 6; 20 - Slot 5

**Type:** Fasteners



## General Data



Designation	Description	System	H	M (Nm)	ESD
PV4010	Galvanised screw connector	20 - Slot 5	7.3	7	Yes
PV4025	Galvanised screw connector including ISO 7380 M5 × 12 screw	20 - Slot 5	7.3	7	Yes
PV3025	Galvanised screw connector including ISO 7380 M6 × 14 screw	30 - Slot 6	7.3	30	Yes
PV3020	Galvanised screw connector	30 - Slot 6	7.3	30	Yes
PA3050	Dummy plug for D5.5 Black	-	-	-	-
PA3055	Dummy plug for D5.5 Grey	-	-	-	-
PA4065	Dummy plug for D4.3, Grey	-	-	-	-
PA4066	Dummy plug for D4.3, Black	-	-	-	-

Designation	A x B	F (N)
PV4010	19 x 10	450
PV4025	19 x 10	450
PV3025	27.5 x 13	600
PV3020	27.5 x 13	600
PA3050	-	-
PA3055	-	-
PA4065	-	-
PA4066	-	-

## Universal Connectors

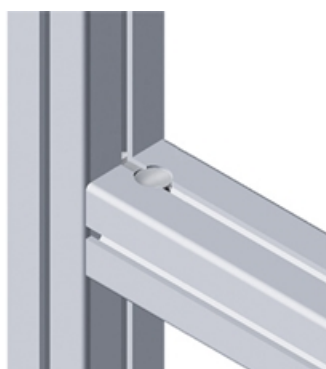
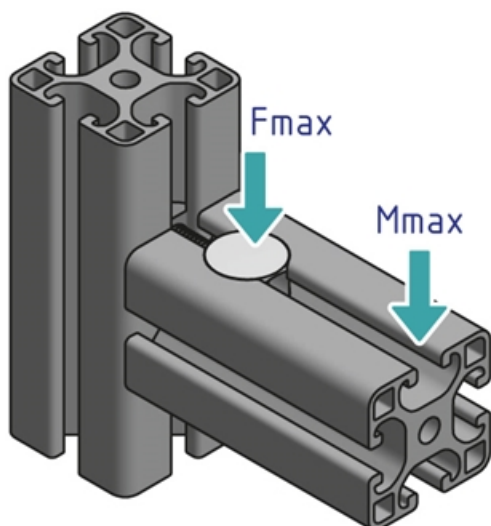
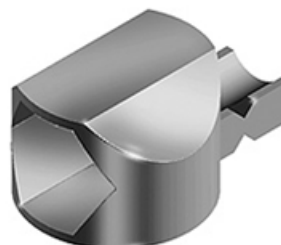
Links two aluminium profiles. Supplied with slot nut and screw.

Material: Galvanised die-cast zinc

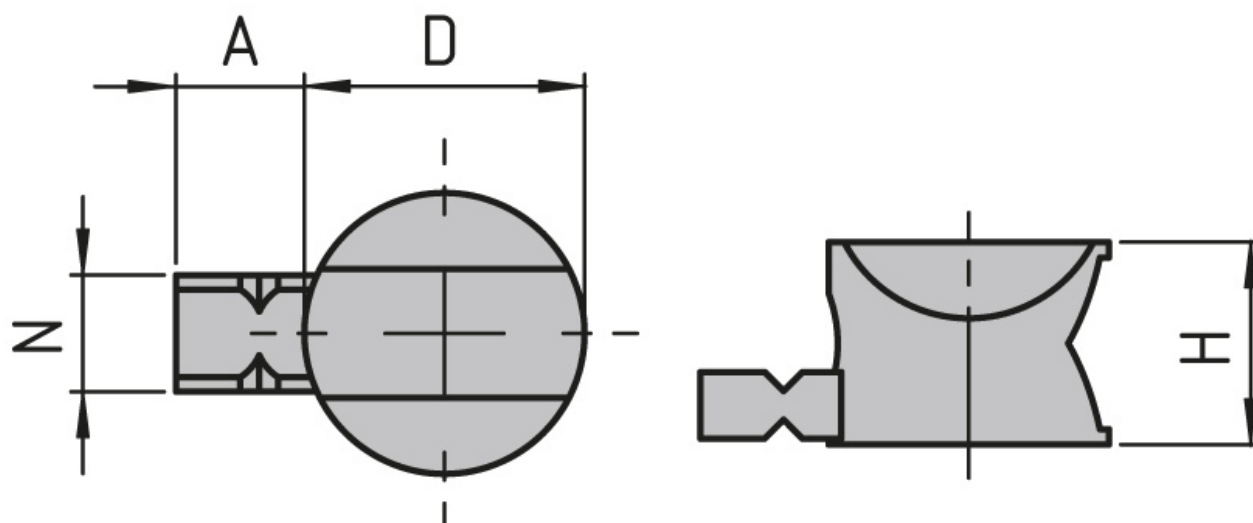
Dummy plug material: PVC, black

**System:** 30 - Slot 6; 20 - Slot 5

**Type:** Fasteners



## General Data



Designation	Description	System	A	D	H
<b>PV4020</b>	Set of universal connectors with guide lug and 4 mm hole; M4 slot nut and cheese head screw included	20 - Slot 5	5.4	11.8	8.5
<b>PV3015</b>	Set of universal connectors with guide lug and 6 mm hole; M6 slot nut and cheese head screw included	30 - Slot 6	9.3	15.7	12.5

Designation	Fmax (N)	Mmax (Nm)
<b>PV4020</b>	400	12
<b>PV3015</b>	1250	35

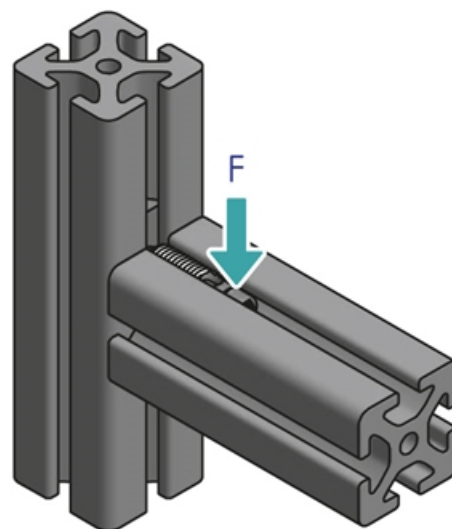
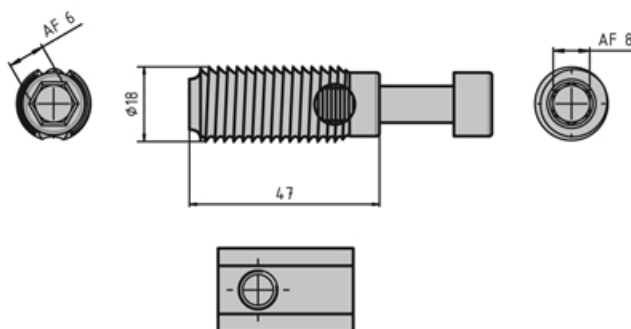
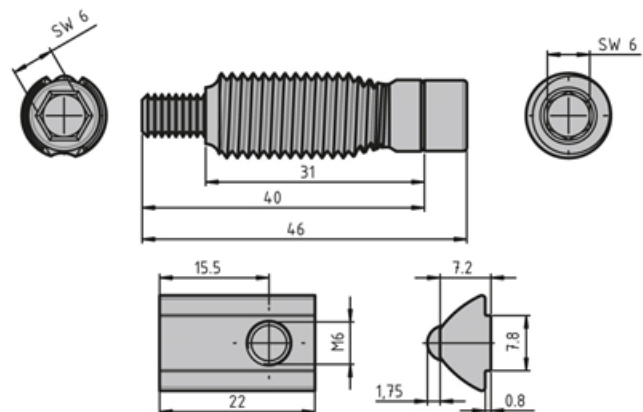
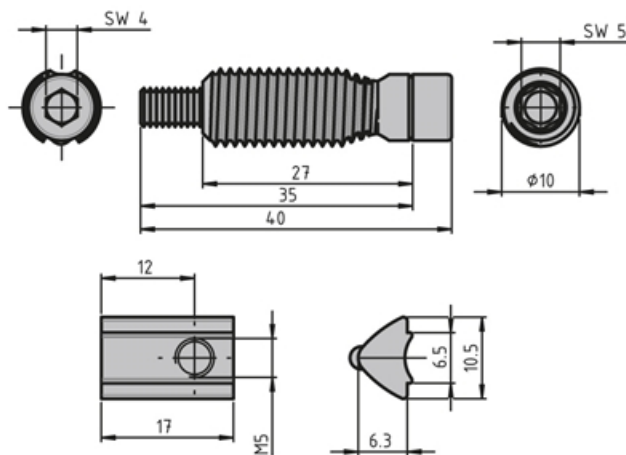
## Automatic Connectors

The set of automatic connectors mount quickly and easily because there is no need for modifying the profiles. Universal force-fit link for all profiles from the same series plus the option of moving them afterwards because the connectors are fitted in a single profile only. There is no restriction on installing them in existing constructions later.

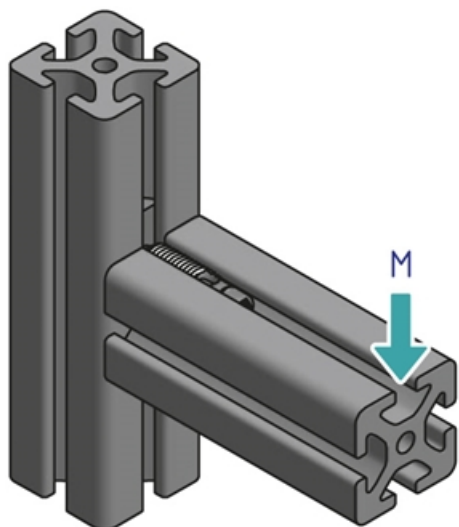
Note: We recommend that you install them in pairs – this is also what the stress data refers to.

**System:** 30 - Slot 6; 20 - Slot 5

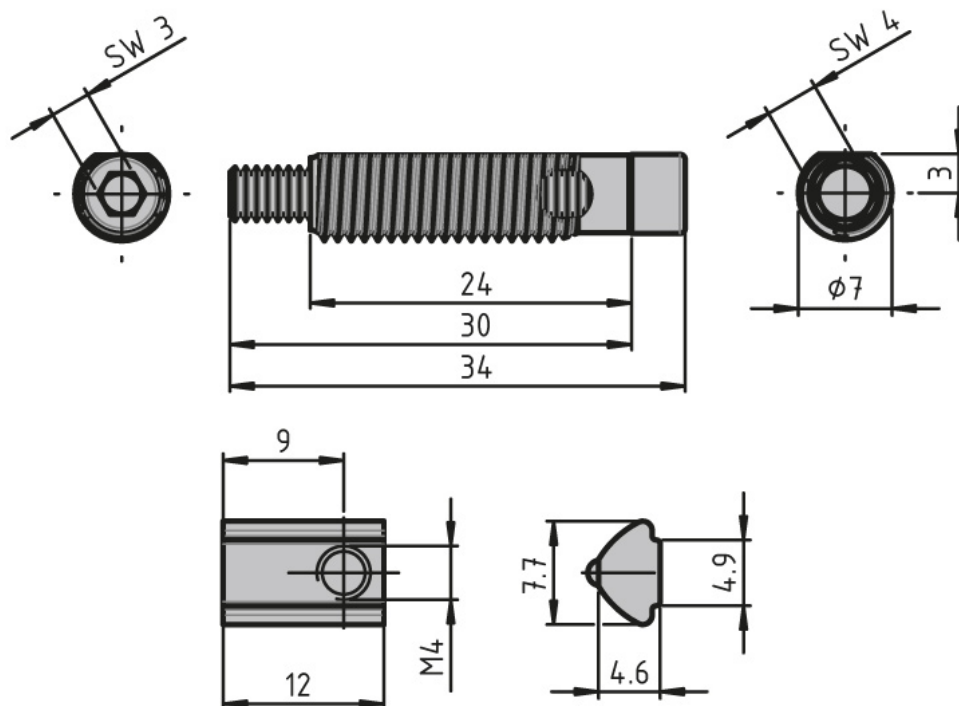
**Type:** Fasteners



## Automatic Connectors



## General Data



Designation	Description	System	Material	M (Nm)	F (N)
<b>PV4035</b>	Automatic connector including slot nut with guide step	20 - Slot 5	Galvanised steel	12.5	350
<b>PV1203</b>	Automatic connector including slot nut with guide step	20 - Slot 5	Stainless steel	20	250
<b>PV3045</b>	Automatic connector including slot nut with guide step	30 - Slot 6	Galvanised steel	40	600
<b>PZ3905</b>	Automatic connector including slot nut with guide step	30 - Slot 6	Stainless steel	30	400



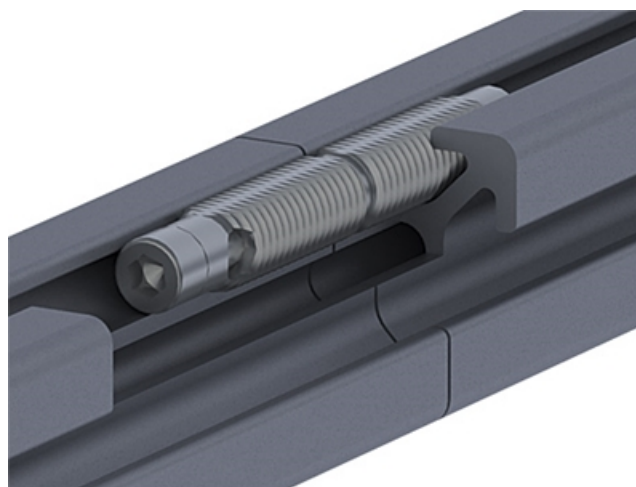
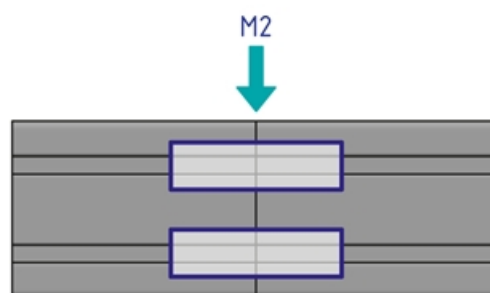
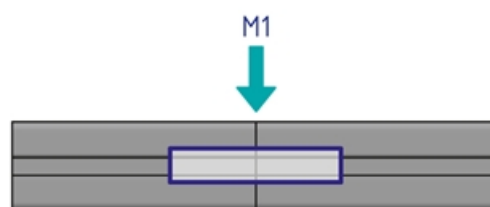
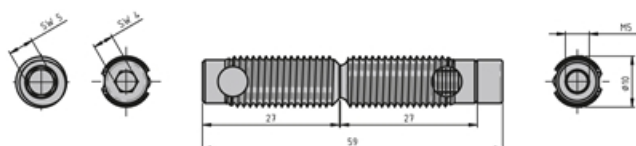
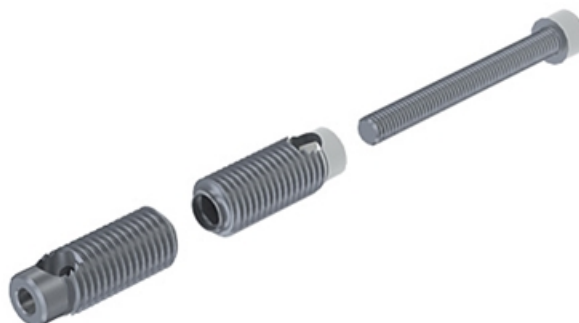
## Automatic Butt Connector

Use the automatic butt connector to quickly and easily link the face ends of two profiles from the same series without having to machine the profiles beforehand. Best practice is to use the automatic butt connectors in pairs. You may need several pairs, depending on the size and load on the profiles. Package includes the screw and cutting bush.

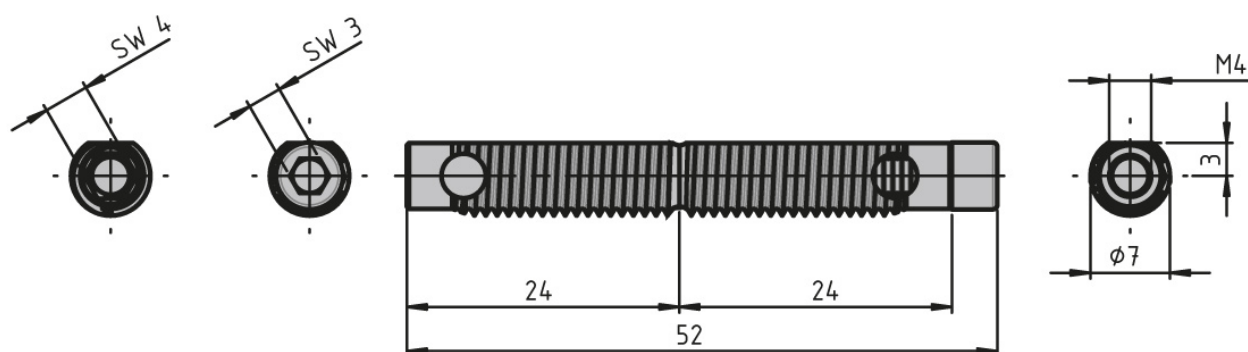
Note: The load values refer to connectors installed in pairs

**System:** 30 - Slot 6; 20 - Slot 5; 40 - Slot 8

**Type:** Fasteners



## General Data



Designation	Description	System	M (Nm)	F (N)
<b>PV4040</b>	Set of automatic butt connectors	20 - Slot 5	22	1500
<b>PV1209</b>	Set of automatic butt connectors	20 - Slot 5	22	1500
<b>PV3050</b>	Set of automatic butt connectors	30 - Slot 6	45	1800
<b>PV1210</b>	Set of automatic butt connectors	30 - Slot 6	45	1800
<b>PV1105</b>	Set of automatic butt connectors	40 - Slot 8	140 (40x40L) / 170 (40x40)	4500

## Central Fastener 6 Anti-rotate

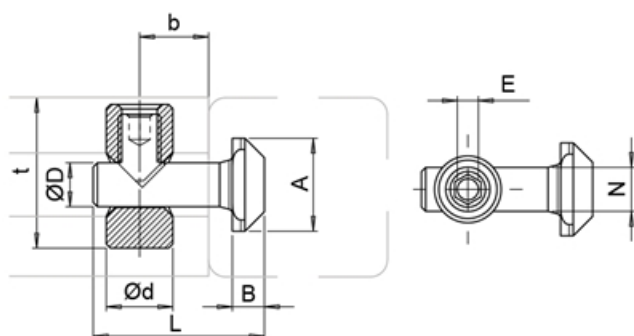
To connect two aluminum profiles at right angles. A hole must be drilled through one of the profiles to provide access to the tightening screw.

Angle: 0° / 90°

**Material:** Stainless steel

**System:** 30 - Slot 6

**Type:** Fasteners



## General Data

Designation	Description	System	A	B	D
<b>PZ3912</b>	Central Fastener 6 Anti-rotate	30 - Slot 6	11.0	3.8	5.2

Designation	L	b	Weight (g)	E
<b>PZ3912</b>	20.3	10	9.5	2.5

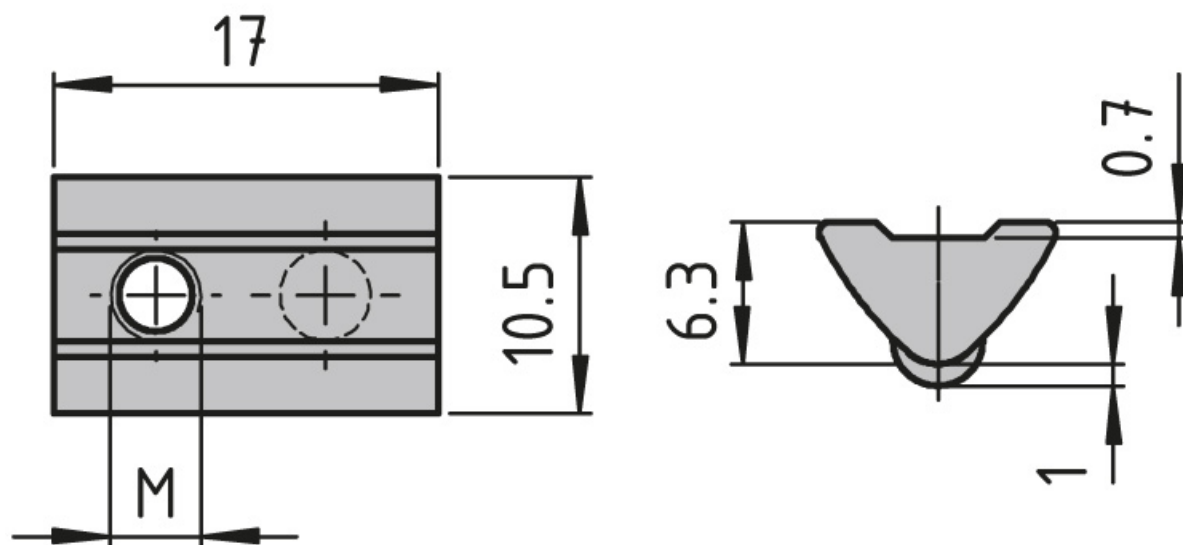
## Pivoting Slot Nut, 10.5 × 6.3 mm

**System:** 30 - Slot 6

**Type:** T-nuts



## General Data



Designation	System	Material	Thread	Fmax (N)
PN3914	30 - Slot 6	Galvanised Steel	M3	500
PN3010	30 - Slot 6	Galvanised Steel	M4	1750
PN3015	30 - Slot 6	Galvanised Steel	M5	1750
PN3020	30 - Slot 6	Galvanised Steel	M6	1750
PN3030	30 - Slot 6	Stainless Steel	M5	1400
PN3025	30 - Slot 6	Stainless Steel	M6	1400

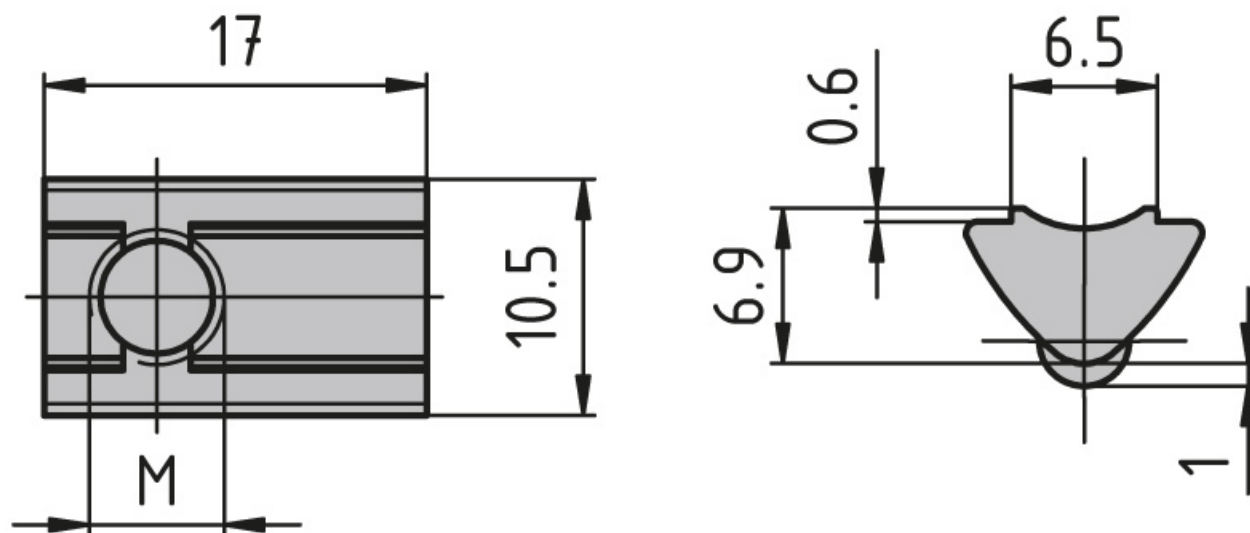
## Pivoting Slot Nut, 10.5 × 6.9 mm

**System:** 30 - Slot 6

**Type:** T-nuts



## General Data



Designation	System	Material	Thread	Fmax (N)
<b>PN2012</b>	30 - Slot 6	Galvanised steel	M3	500
<b>PN3055</b>	30 - Slot 6	Galvanised steel	M4	1750
<b>PN3060</b>	30 - Slot 6	Galvanised steel	M5	1750
<b>PN3065</b>	30 - Slot 6	Galvanised steel	M6	1750



## Uniblock

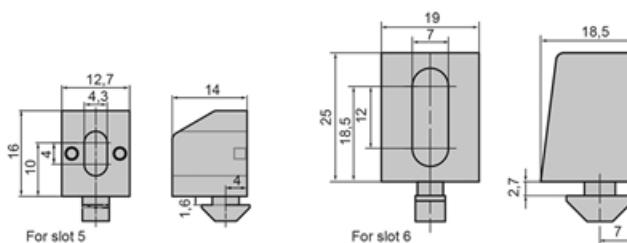
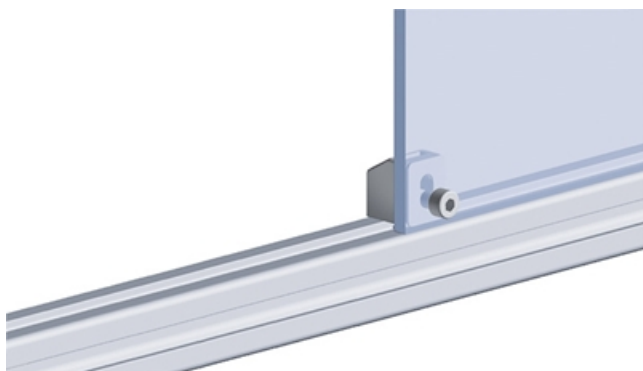
Fastening surface elements to aluminium profiles made easy.

Material: Pad: Plastic (PA), fibreglass-reinforced.

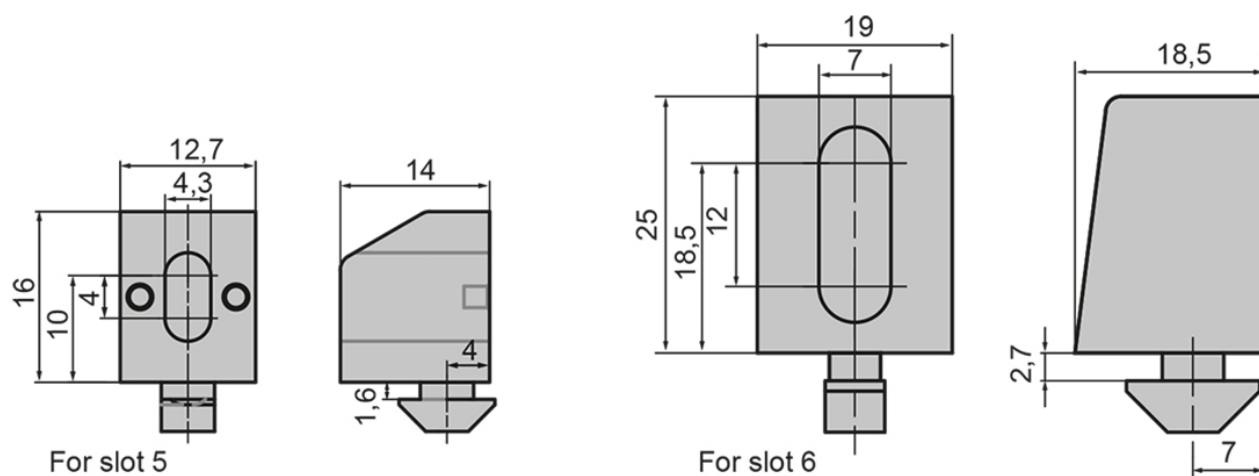
Nut: Galvanised steel

**System:** 30 - Slot 6; 20 - Slot 5

**Type:** Fixing Blocks/Fastening Elements



## General Data



Designation	Description	System
<b>PZ4090</b>	Uniblock 14 with M4 square nut	20 - Slot 5
<b>PZ5061</b>	Uniblock 18 with M4 square nut	30 - Slot 6
<b>PZ5062</b>	Uniblock 18 with M5 square nut	30 - Slot 6
<b>PZ5063</b>	Uniblock 18 with M6 square nut	30 - Slot 6

## Tie Plates

Links two aluminium profiles.

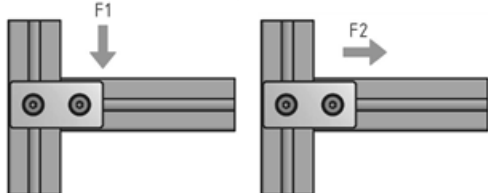
Note: To install the ESD-ready tie plates, use a notched slot nut in order to make a conductive link.

**System:** 20 - Slot 5; 30 - Slot 6

**Type:** Angles Brackets and Corners; Fasteners

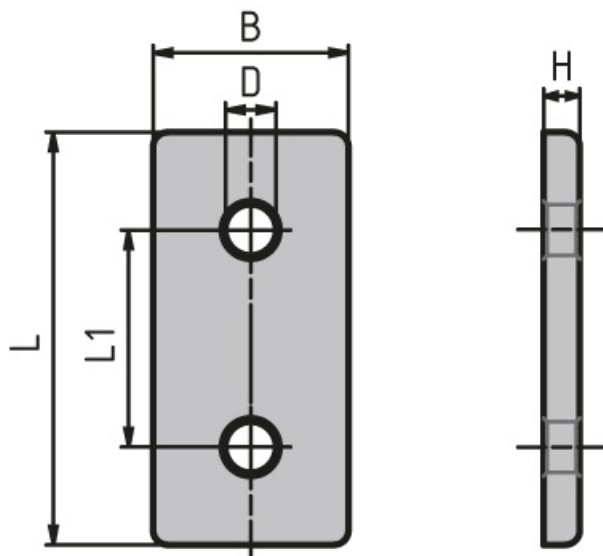


**Tie plate loads**



Size	F1 (N)	F2 (N)
20x40	250	300
20x80	350	400
30x60	400	550
30x60	700	800
30x60	700	800

## General Data



Designation	Description	Material	B	D	H
<b>PV1215</b>	Tie plate 20 × 40 mm	Black powder coated steel	20	5.5	3
<b>PV1216</b>	Tie plate 20 × 40 mm	Nickel-plated aluminium, matt	18	5.5	4
<b>PV1217</b>	Tie plate 20 × 80 mm	Nickel-plated aluminium, matt	18	5.5	5
<b>PV1218</b>	Tie plate 30 × 60 mm	Nickel-plated aluminium, matt	27	7	5
<b>PZ3055</b>	Tie plate 30 × 60 mm	Black powder coated	30	CountersinkDIN74-Am6	3
<b>PV1219</b>	Tie plate 30 × 60 mm	Galvanised steel	30	11	3

Designation	L	ESD	L1	Recommended screw size	Screw Type
<b>PV1215</b>	40	-	20	ISO7380 M5×8	ISO7380 M5×8
<b>PV1216</b>	38	Yes	20	ISO7380 M5×8	ISO7380 M5×8
<b>PV1217</b>	78	Yes	20	ISO7380 M5×8	M6 × 8 (ISO7380)
<b>PV1218</b>	57	-	30	ISO7380 M6×12	ISO7380 M6×12
<b>PZ3055</b>	60	-	30	ISO7991 M6 × 10	ISO7991 M6 × 10
<b>PV1219</b>	60	Yes	30	ISO7380 M6 × 10	ISO7380 M6 × 10

## Mounting Angle

Variable angles for mounting components.  
Oblong holes provide a wide range of position and angle adjustment. Use up to M6 screws to attach them.

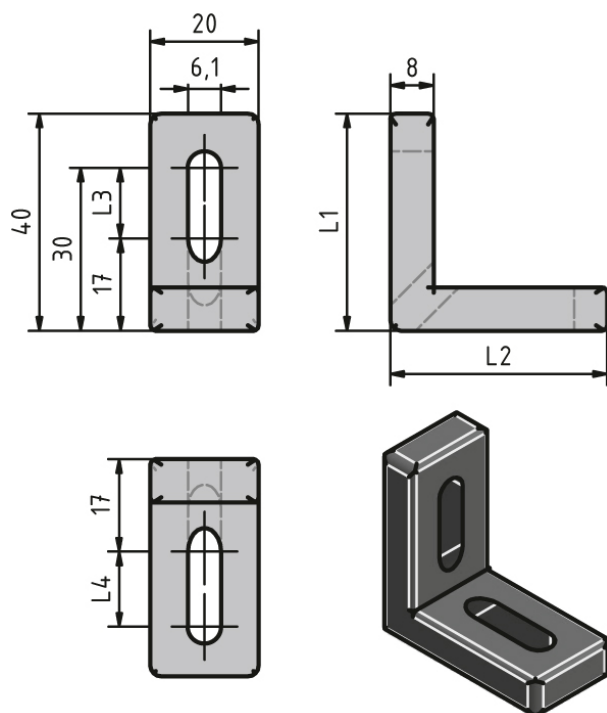
Material: Black die-cast zinc

**System:** 40 - Slot 8; 30 - Slot 6; 20 - Slot 5

**Type:** Angles Brackets and Corners; Fasteners



## General Data



Designation	L1	L2	L3	L4
<b>PZ1920</b>	40	40	13	13
<b>PZ1925</b>	60	40	33	13
<b>PZ1935</b>	80	40	53	13

## Bracket 60 × 60

Material: Bracket: Uncoated die-cast zinc

Cap: Black plastic (PA)

Slot 6 mounting material:

8× M6 slot 6 slot nuts with step

8× M6 × 14 screw (DIN 7380)

Slot 12 mounting material:

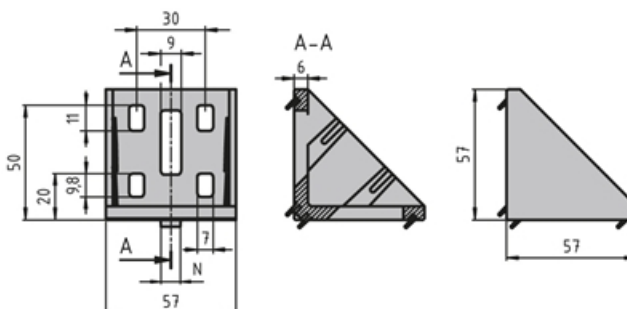
8× M8 slot 12 slot nuts with step

8× washer (DIN 125)

8× M8×28 screw (DIN7380 )

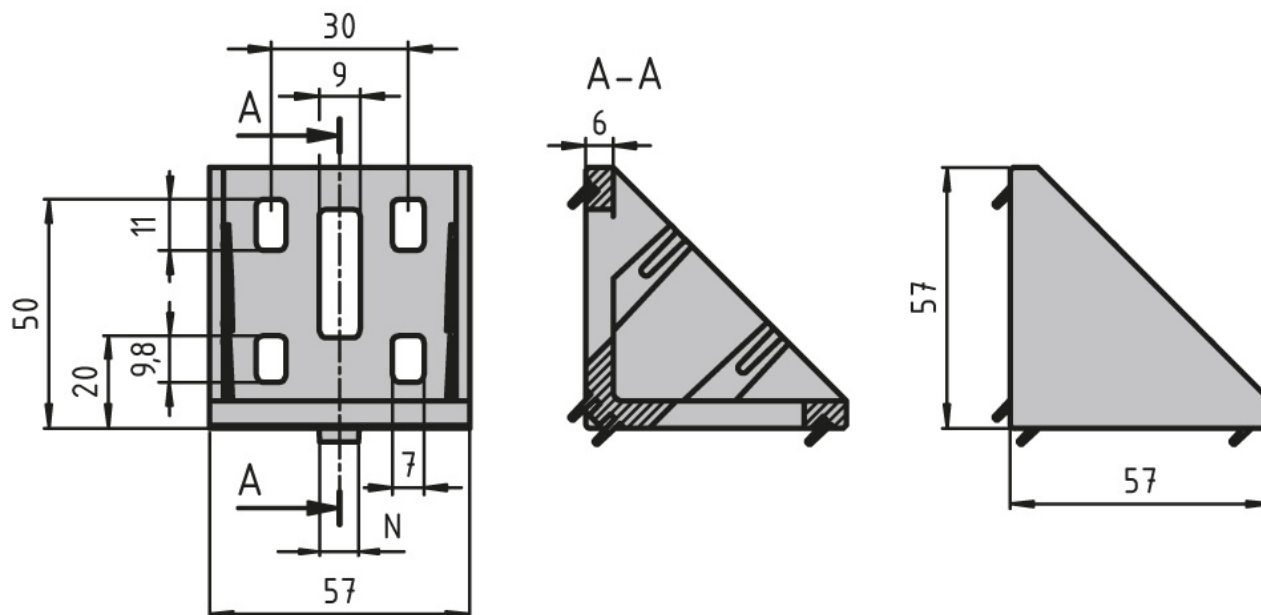
**System:** 30 - Slot 6

**Type:** Angles Brackets and Corners; Fasteners



<b>Fmax (N)</b>	<b>Mmax 1 (Nm)</b>	<b>Mmax 2 (Nm)</b>
2000	100	120

## General Data



Designation	Description	System	ESD
<b>PZ5010</b>	Bracket 60 × 60	30 - Slot 6	-
<b>PZ5011</b>	Bracket 60 × 60 with mounting material and ABDK	30 - Slot 6	Yes
<b>PZ5012</b>	Bracket 60 × 60 silver powder coated with mounting material and ABDK	30 - Slot 6	-
<b>PA1205</b>	Cap 60 × 60	30 - Slot 6	-
<b>PZ5013</b>	Bracket 60 × 60 with mounting material and ABDK	30 - Slot 6	Yes
<b>SZ0967N</b>	Corner Bracket Zn 30 x 30	30 - Slot 6	-
<b>SZ0965N</b>	Corner Bracket Zn 20 x 20	30 - Slot 6	-
<b>SZ0964N</b>	SZ0964N Corner bracket ZN 20x20 Set	30 - Slot 6	-



## Corner Angle 30

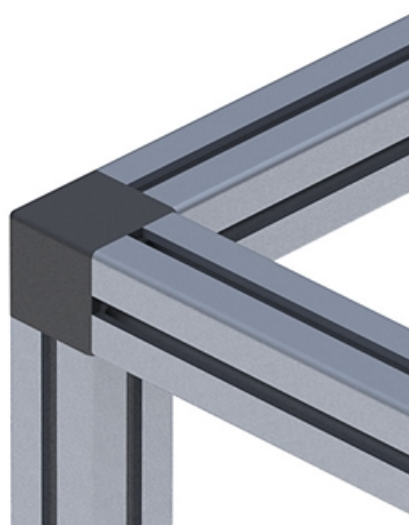
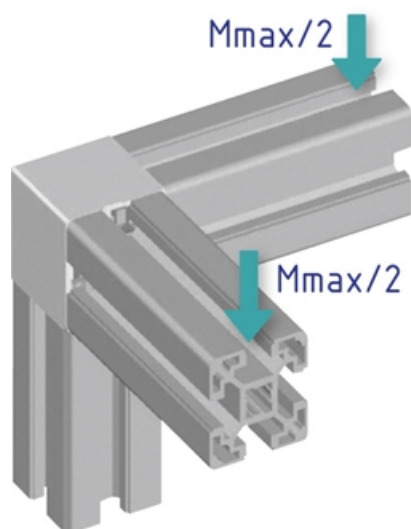
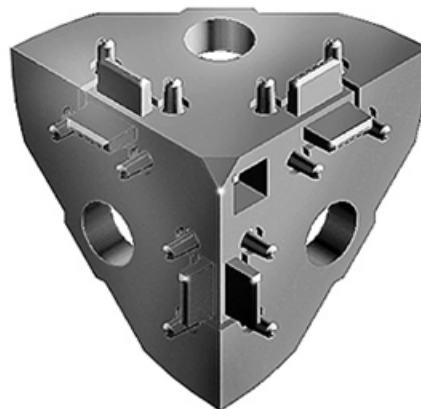
Right-angled links between up to three square or semi-circular profiles of the same cross section. Square or round caps for protection against injury and dirt.

Material: Corner angle: Uncoated die-cast zinc  
Caps: plastic (PA).

Note: The caps in the sets are not ESD-ready.

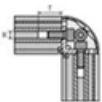
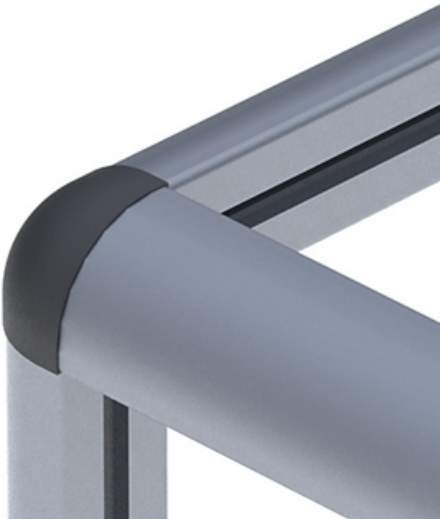
**System:** 30 - Slot 6

**Type:** Angles Brackets and Corners; Fasteners



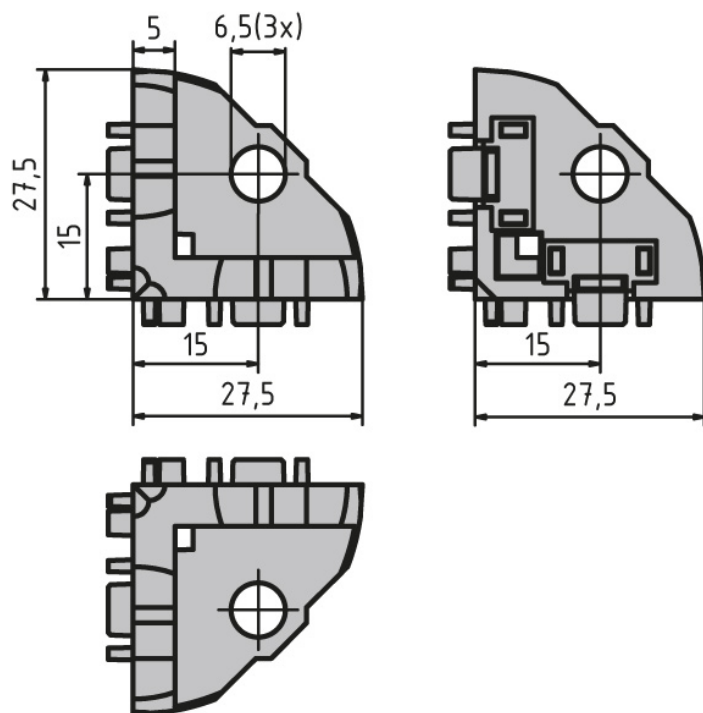


# Corner Angle 30



	5	6
Machining of corner angle	Profile 20x20	Profile 30x30
Thread (M)	M5	M5
Depth (T)	25 mm	25 mm

## General Data



Designation	Description	System	F (Nm)	ESD
<b>PZ5017</b>	Corner angle 30 including 3 M6 × 16 screws (ISO 7380)	30 - Slot 6	40	Yes
<b>PV1076</b>	Corner angle 30 including 3 M6 × 16 screws (ISO 7380) and square black cap	30 - Slot 6	40	Yes
<b>PZ5018</b>	Corner angle 30 including 3 M6 × 16 screws (ISO 7380) and square grey cap (RAL7004)	30 - Slot 6	40	Yes
<b>PZ5298</b>	Corner angle 30 including 3 M6 × 16 screws (ISO 7380) and round black cap	30 - Slot 6	40	Yes
<b>PA1208</b>	Round black cap	30 - Slot 6	-	-
<b>PA1209</b>	Square black cap	30 - Slot 6	-	-
<b>PA1210</b>	Square grey cap (RAL7004)	30 - Slot 6	-	-

## Angle Element

Connecting element for mounting a profile at a 45° angle when building intersections or trusswork.

Use the angle element with a universal connector.

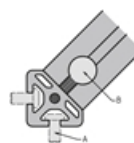
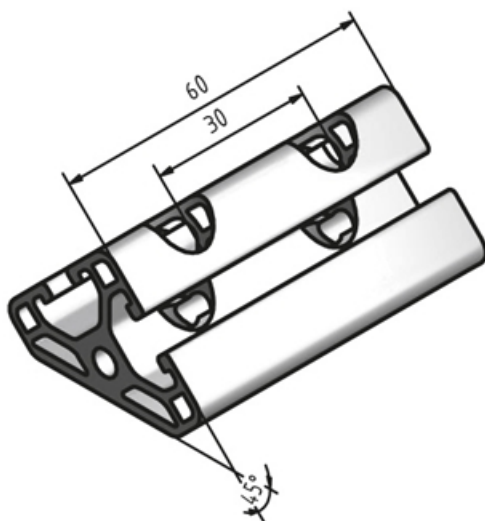
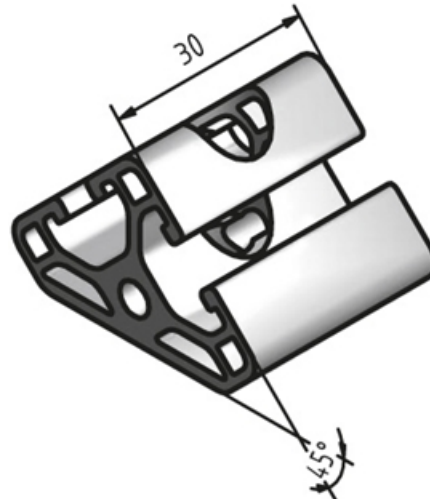
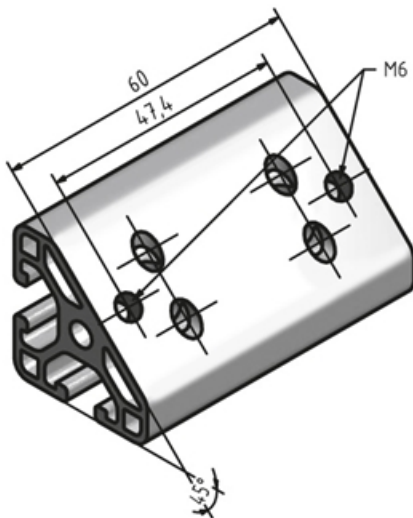
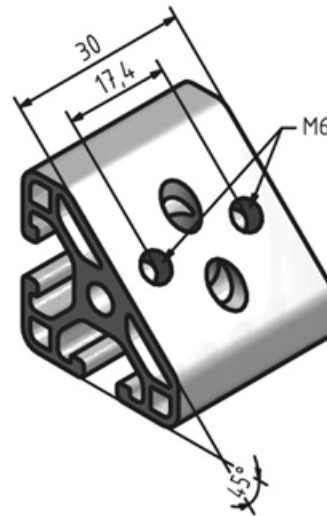
Use caps Slot 6 30 × 30, 45°.

Material: Anodised aluminium

Note: Use a notched slot nut to ensure that the connection is ESD-ready.

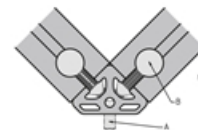
**System:** 30 - Slot 6

**Type:** Angles Brackets and Corners; Fasteners



Angle element T1

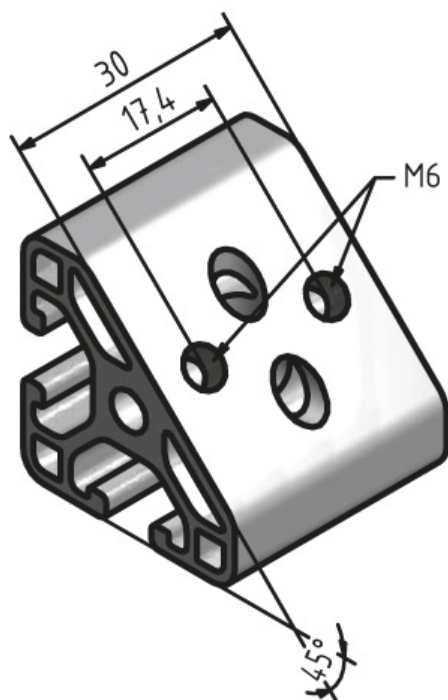
Nut 6: A Round head screw ISO 7380-M6x12  
 Washer DIN 125-6,4  
 B Universal connector 6



Angle element T2

Nut 6: A Round head screw ISO 7380-M6x16  
 B Universal connector 6

## General Data



Designation	Description	System	ESD
<b>PZ3210</b>	Angle element T1-30	30 - Slot 6	Yes
<b>PZ3215</b>	Angle element T1-60	30 - Slot 6	Yes
<b>PZ3220</b>	Angle element T2-30	30 - Slot 6	Yes
<b>PZ3225</b>	Angle element T2-60	30 - Slot 6	Yes

## Articulated Brackets

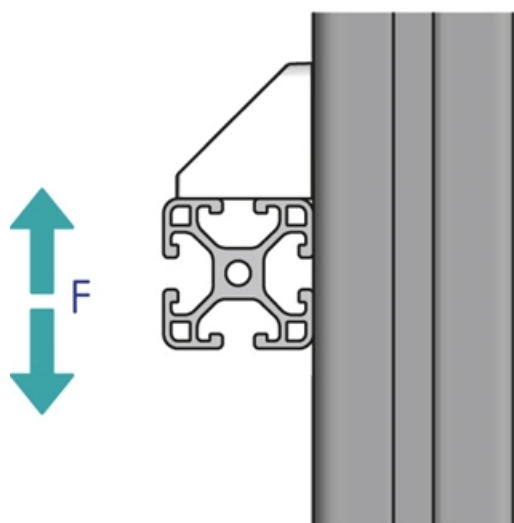
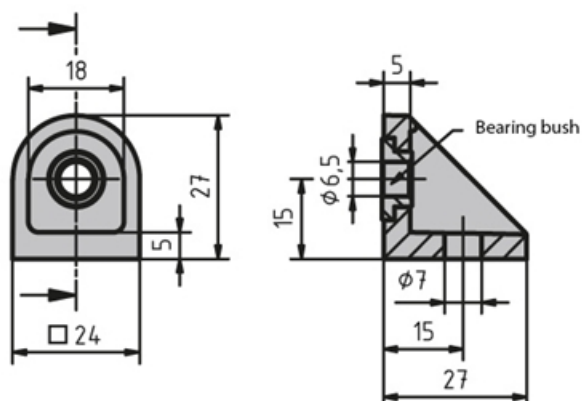
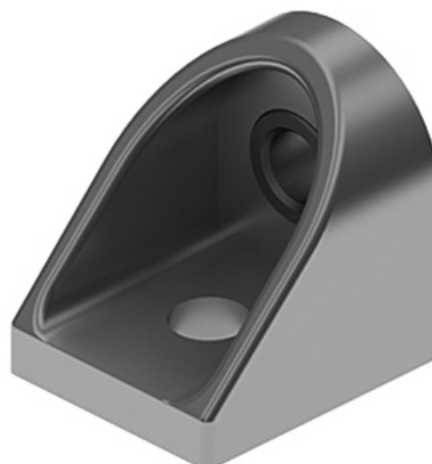
Links two aluminium profiles at various angles.  
The bearing bush ensures unrestricted rotation even when mounted.

Material: Die-cast zinc

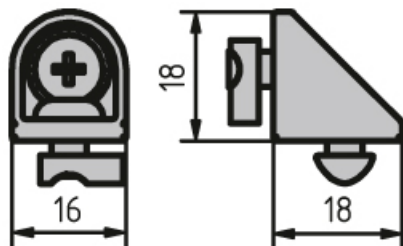
Note: To install the ESD-ready brackets, use a notched slot nut in order to make a conductive link.

**System:** 30 - Slot 6; 20 - Slot 5

**Type:** Angles Brackets and Corners; Fasteners



## General Data



Designation	Description	ESD	F (N)	Drill hole
<b>PZ4170</b>	Articulated bracket 20, aluminium coloured with M5 slot 5 slot nut, 1× M5 × 8 screw (ISO7380), 1× M5 × 10 flanged fillister head screw, 1× bearing bush	-	-	-
<b>PZ5019</b>	Articulated bracket 30, uncoated	Yes	800	for M6 screw
<b>PZ3085</b>	Articulated bracket 30, aluminium coloured	-	800	for M6 screw

## Clamping Bracket

Simple and reliable link between intersecting profiles.

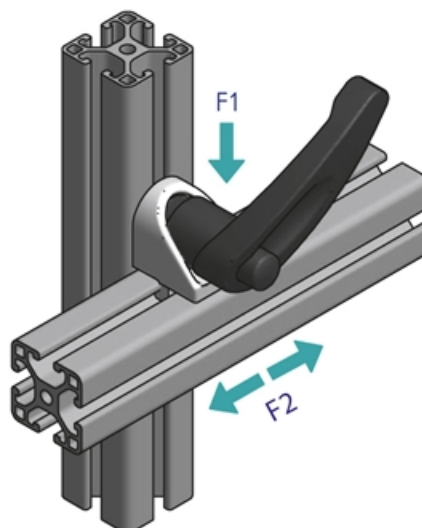
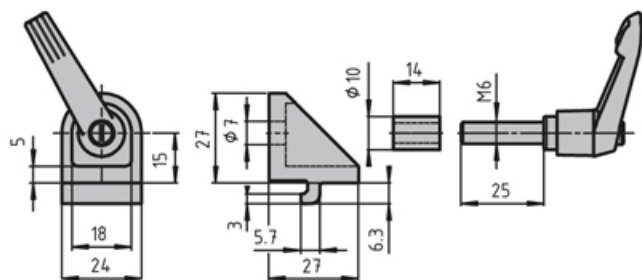
Bracket with clamping lever for variable use.

Sets to any angle.

Material: Aluminium coloured die-cast zinc

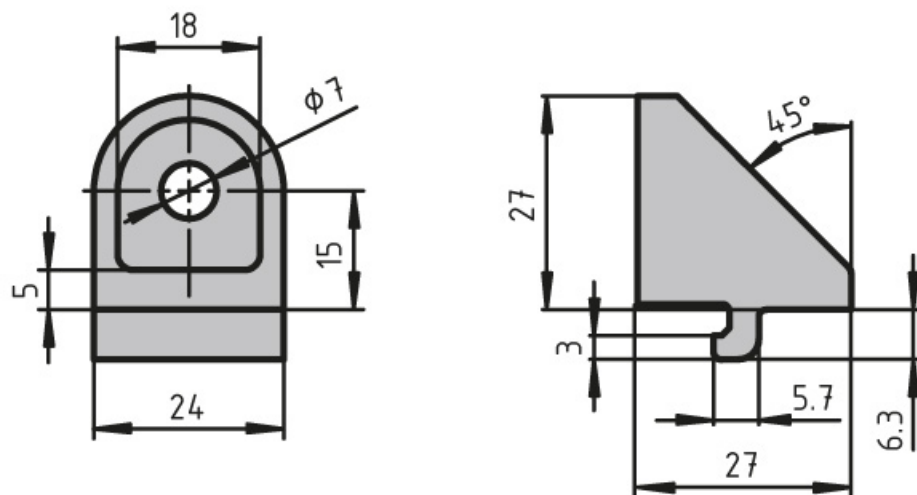
**System:** 30 - Slot 6

**Type:** Angles Brackets and Corners; Fasteners





## General Data



Designation	Description	System	F1 (N)	F2 (N)
<b>PZ3090</b>	Clamping bracket 30	30 - Slot 6	800	200
<b>PZ3095</b>	Clamping bracket 30 with clamping lever	30 - Slot 6	600	100

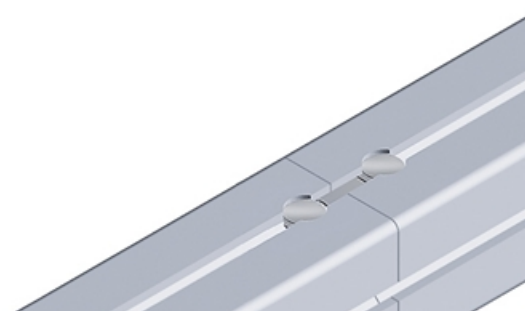
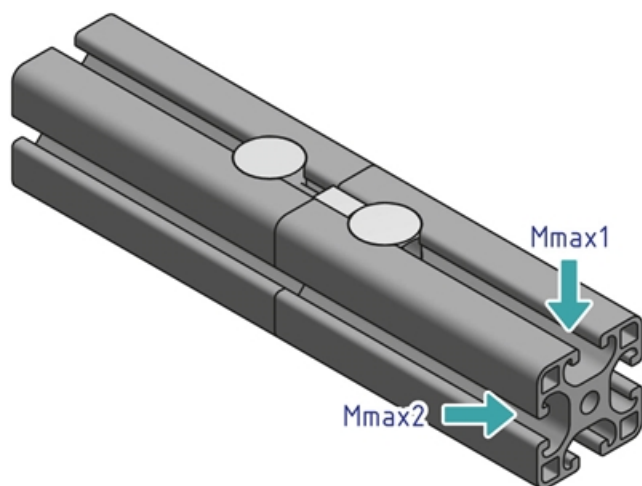
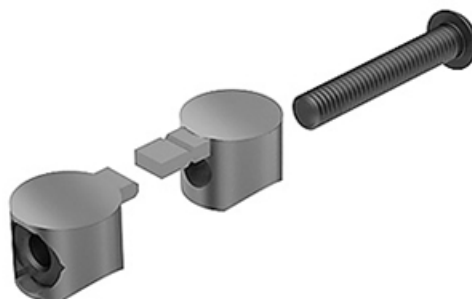
## Universal Butt Connector

Links the face ends of two aluminium profile from the same series. Supplied with mounting kit.

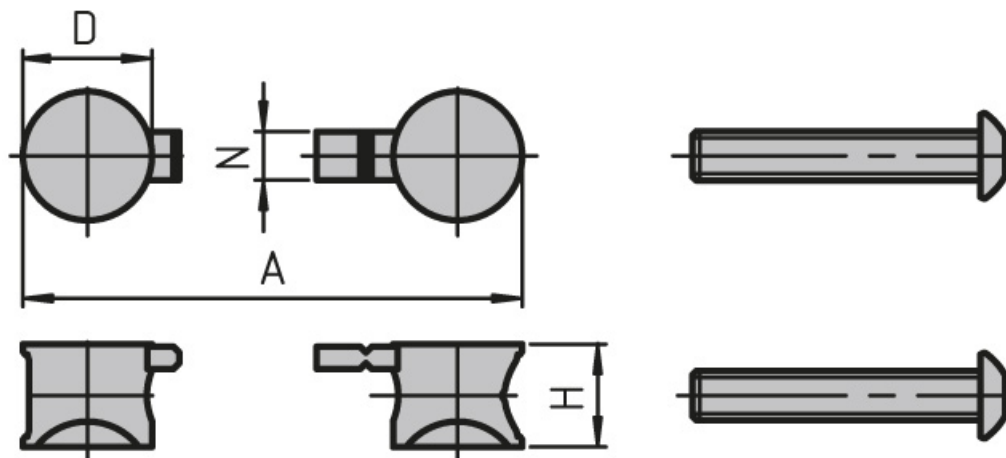
Material Connector: Galvanised die-cast zinc

**System:** 30 - Slot 6; 20 - Slot 5

**Type:** Fasteners



## General Data



Designation	Description	System	A	D	H
<b>PV4030</b>	Universal connector set (2 universal connectors, 1 M4 × 20 screw (DIN912), 1 M4 nut (DIN934))	20 - Slot 5	32	11.8	8.5
<b>PV3016</b>	Universal connector set (2 universal connectors, 1 M6 × 35 screw (ISO7380), 1 M6 nut (DIN934))	30 - Slot 6	46	15.7	12.5

Designation	Fmax (N)	Mmax (Nm)	Mmax1 (Nm)	Mmax2 (Nm)
<b>PV4030</b>	-	-	20	20
<b>PV3016</b>	50	50	50	50

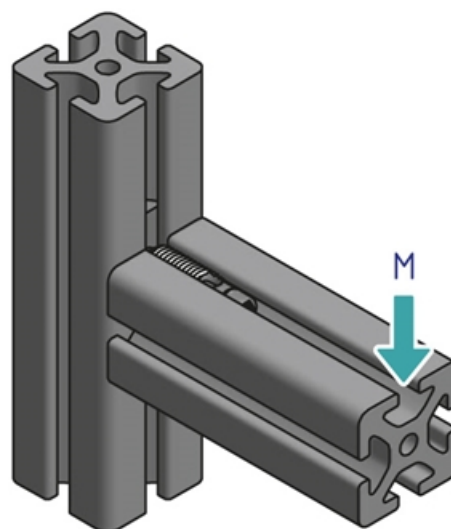
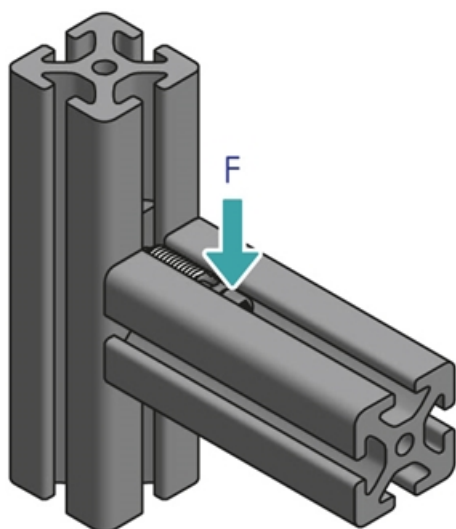
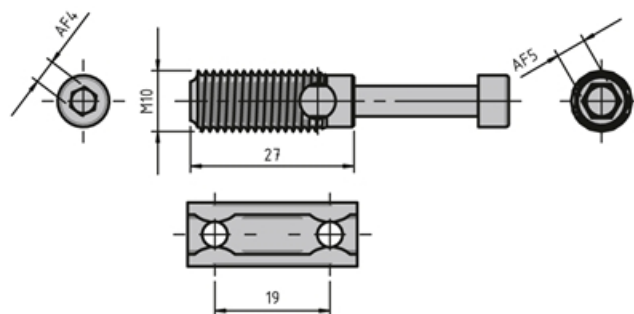
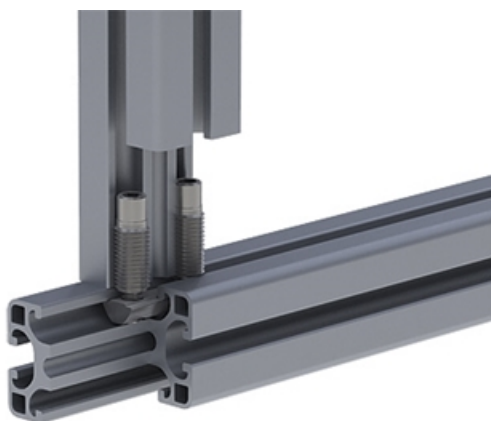
## Automatic Combination Connector

Quickly and reliably links two aluminium profiles without having to modify them.

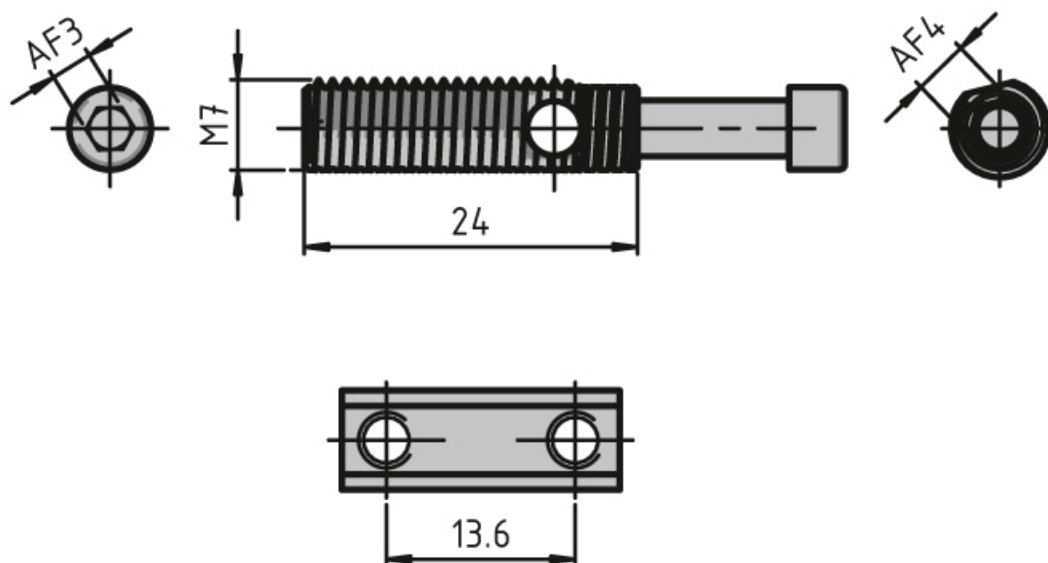
Material: Galvanised steel

**System:** 30 - Slot 6; 20 - Slot 5

**Type:** Fasteners



## General Data



Designation	Description	System	M (Nm)	F (N)
<b>PV1204</b>	Automatic combination connector 20 including slot nut with guide step	20 - Slot 5	6	350
<b>PV1205</b>	Automatic combination connector 30 including slot nut with guide step	30 - Slot 6	35	600

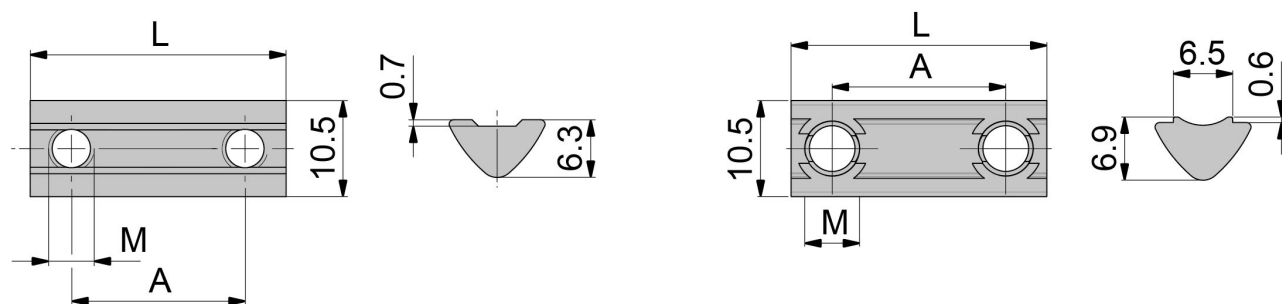
## Pivoting Double Slot Nut, 10.5 mm

**System:** 30 - Slot 6

**Type:** T-nuts



## General Data



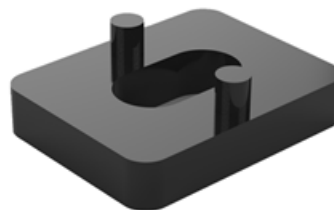
Designation	System	Material	Thread	A	L
PN2006	30 - Slot 6	Galvanised steel	2 x M5	49	58
PN3115	30 - Slot 6	Galvanised steel	2 x M6	19	28
PN3125	30 - Slot 6	Galvanised steel	2 x M6	47	58
PN2007	30 - Slot 6	Galvanised steel	2 x M5	19	28
PN2008	30 - Slot 6	Galvanised steel	2 x M5	49	58
PN2009	30 - Slot 6	Galvanised steel	2 x M6	19	28
PN2010	30 - Slot 6	Galvanised steel	2 x M6	49	58
PN2011	30 - Slot 6	Galvanised steel	No	-	1500

Designation	Step	Fmax (N)
PN2006	No	1750
PN3115	No	1750
PN3125	No	1750
PN2007	Yes	1750
PN2008	Yes	1750
PN2009	Yes	1750
PN2010	Yes	1750
PN2011	Yes	-

## Uniblock Spacer

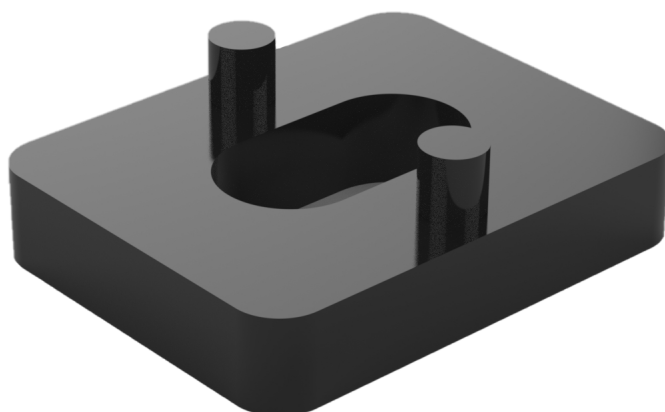
**System:** 30 - Slot 6; 20 - Slot 5

**Type:** Fixing Blocks/Fastening Elements





## General Data



Designation	Description	System
<b>PZ5300</b>	Uniblock 14 5 spacer 1,0 mm	20 - Slot 5
<b>PZ5301</b>	Uniblock 14 5 spacer 2,0 mm	20 - Slot 5
<b>PZ5302</b>	Uniblock 14 5 spacer 3,0 mm	20 - Slot 5
<b>PZ5303</b>	Uniblock 14 5 spacer 4,0 mm	20 - Slot 5
<b>PZ5304</b>	Uniblock 18 6 spacer 2,0 mm	30 - Slot 6
<b>PZ5305</b>	Uniblock 18 6 spacer 3,0 mm	30 - Slot 6
<b>PZ5306</b>	Uniblock 18 6 spacer 5,0 mm	30 - Slot 6

## Clamping Pad

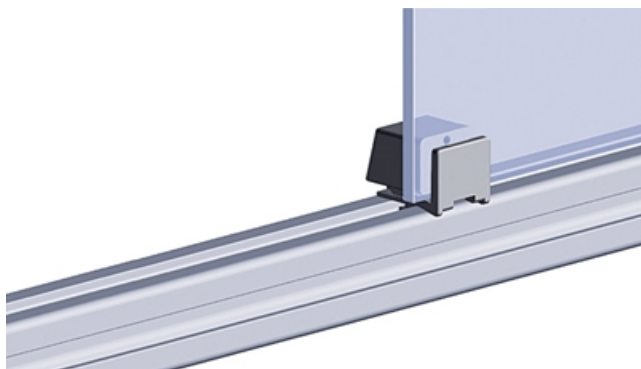
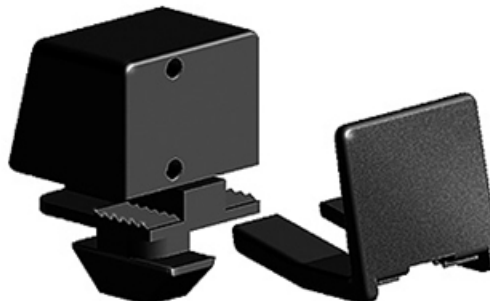
For fastening surface elements to aluminium profiles without tools.

Material: Plastic (PA), fibreglass-reinforced

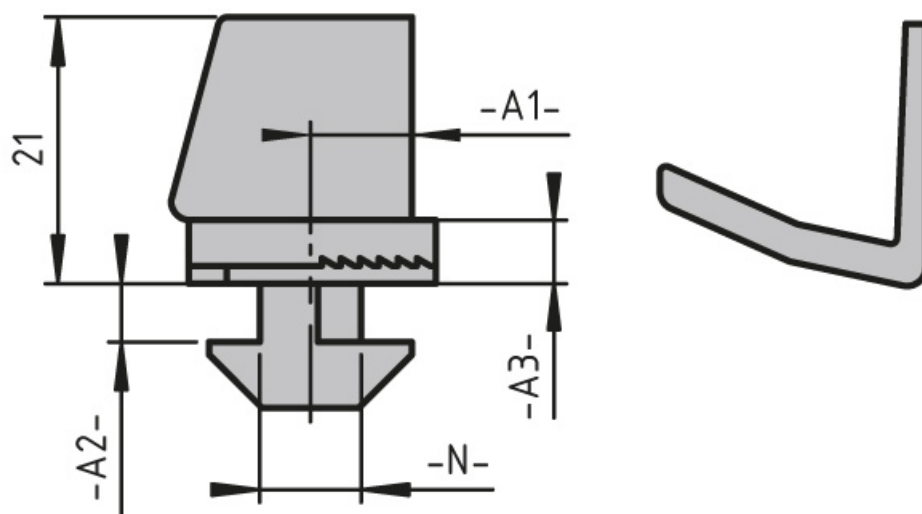
Clamping width: 1-9 mm surface elements

**System:** 30 - Slot 6; 20 - Slot 5

**Type:** Fixing Blocks/Fastening Elements



## General Data



Designation	Description	System	Colour	A1	A2
PZ4115	Clamping pad	20 - Slot 5	Black	4	1.6
PZ5064	2 mm clamping pad spacer	20 - Slot 5	Black	-	-
PZ5065	3 mm clamping pad spacer	20 - Slot 5	Black	-	-
PZ5066	4 mm clamping pad spacer	20 - Slot 5	Black	-	-
PZ5067	Clamping pad	20 - Slot 5	traffic grey, similar to RAL7042	4	1.6
PZ3165	Clamping pad	30 - Slot 6	Black	7	2.7
PZ5068	Clamping pad	30 - Slot 6	traffic grey, similar to RAL7042	7	2.7

Designation	A3
PZ4115	3.6
PZ5064	-
PZ5065	-
PZ5066	-
PZ5067	3.6
PZ3165	4.5
PZ5068	4.5

## Panel Bracket

Fastens the surface element on the profile without further changes.

Tightening the clamping screw fastens the collet to both the surface element and the profile.

Do not use for grids or wave grids.

For 2-9 mm surface elements.

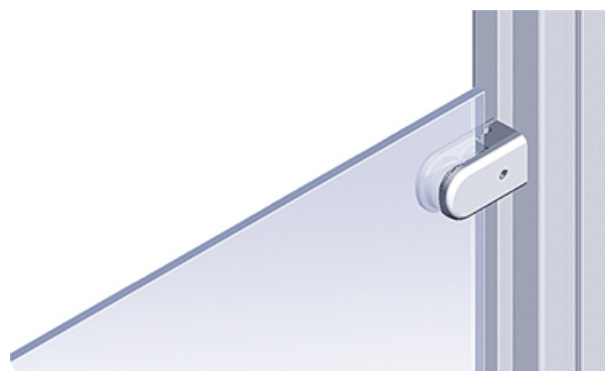
Material: Die-cast zinc, aluminium coloured powder coat

Set: 1 panel bracket, M5 × 16 screw,

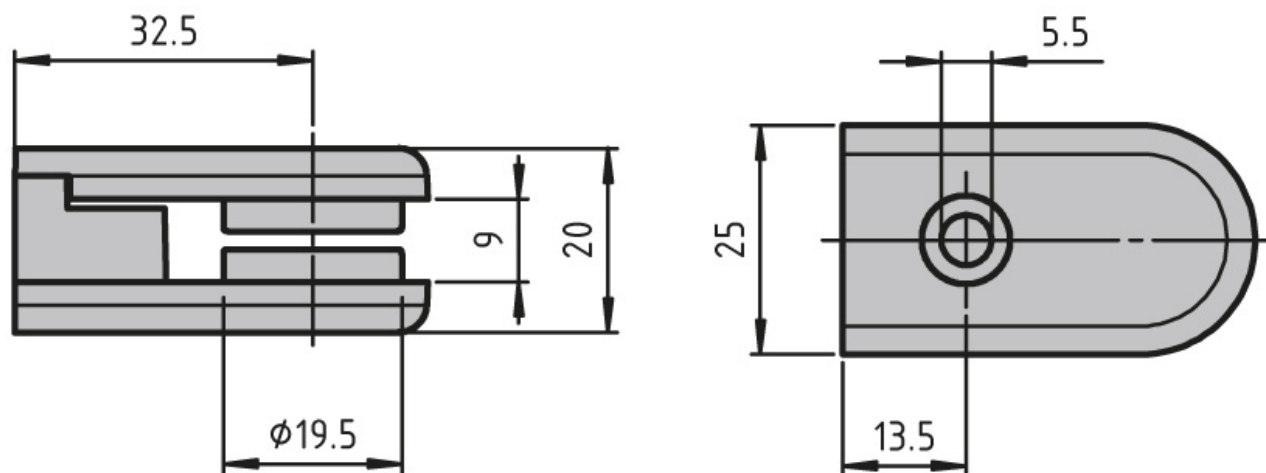
5 rubber pads for 2–9 mm plates

**System:** 40 - Slot 8; 30 - Slot 6; 20 - Slot 5

**Type:** Fixing Blocks/Fastening Elements



## General Data



Designation	Description
PZ5069	Panel bracket

## Earthing Strap

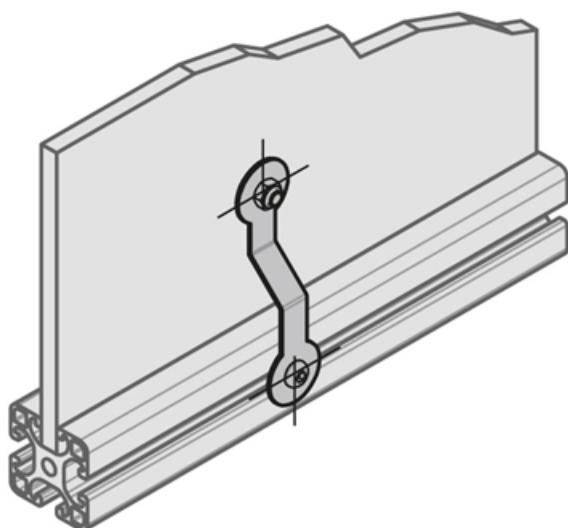
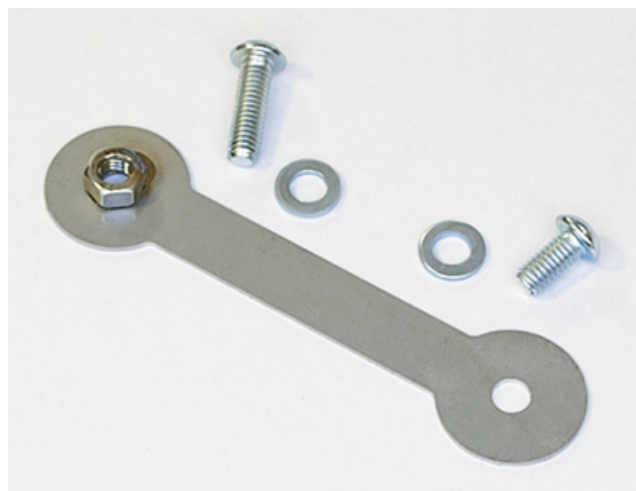
Creates a conductive link between surface elements and brace profiles.

Material: Stainless strip steel

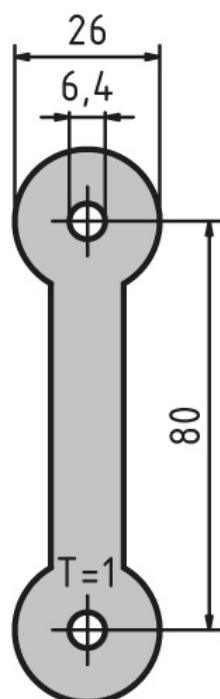
Package includes: 1× M6 × 20 fillister head screw (DIN7380), galvanised, 1× M6 × 12 fillister head screw (DIN7380), galvanised

**System:** 40 - Slot 8; 30 - Slot 6; 20 - Slot 5

**Type:** Fixing Blocks/Fastening Elements



## General Data



Designation	Description
PZ5070	Earthing strap with welded-on nut