

## Die-Cast Zinc Hinge with Oblong Holes, No Unhinging

Directly links to frameless surface elements and, by creating an articulated link between two profiles, allows surfaces with frames to connect to the base frame.

No unhinging.

Material: Wing: Die-cast zinc with a black powder coat; Pin:

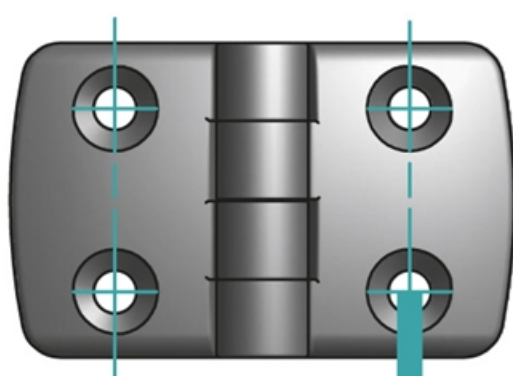
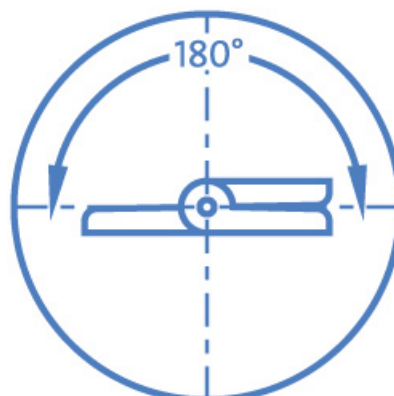
Stainless steel

On-site mount

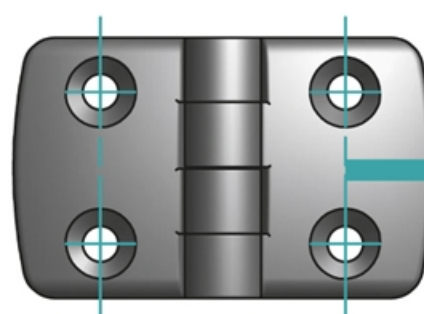
Note: Use a notched slot nut to ensure that the connection is ESD-ready.

**System:** 30 - Slot 6

**Type:** Hinges



axial:  $F_{Amax}$

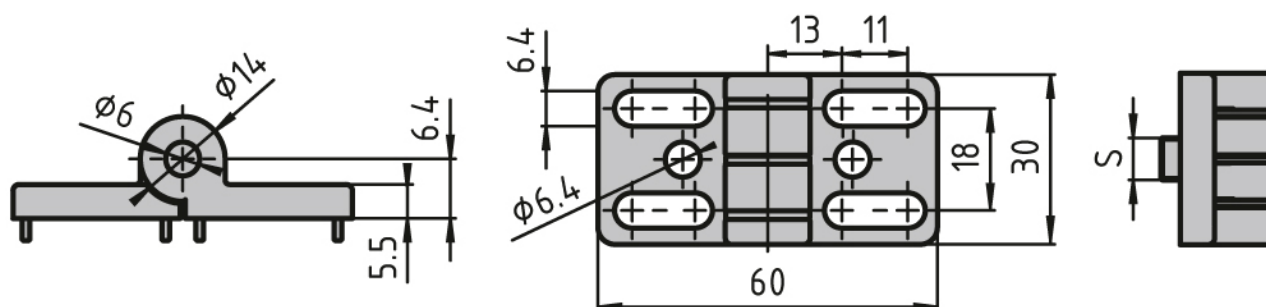


radial:

$F_{Rmax}$



## General Data



Designation	Description	System	F <sub>Amax</sub> (N)	F <sub>Rmax</sub> (N)
<b>PZ3230</b>	Hinge 30	30 - Slot 6	250	1000
<b>PZ5114</b>	Hinge 30	30 - Slot 6	350	1000