

Panel Bracket

Fastens the surface element on the profile without further changes.

Tightening the clamping screw fastens the collet to both the surface element and the profile.

Do not use for grids or wave grids.

For 2-9 mm surface elements.

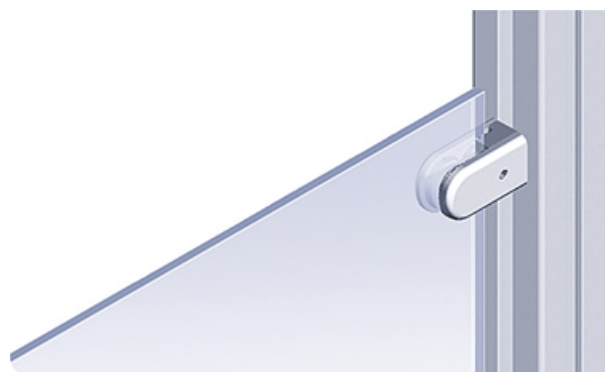
Material: Die-cast zinc, aluminium coloured powder coat

Set: 1 panel bracket, M5 × 16 screw,

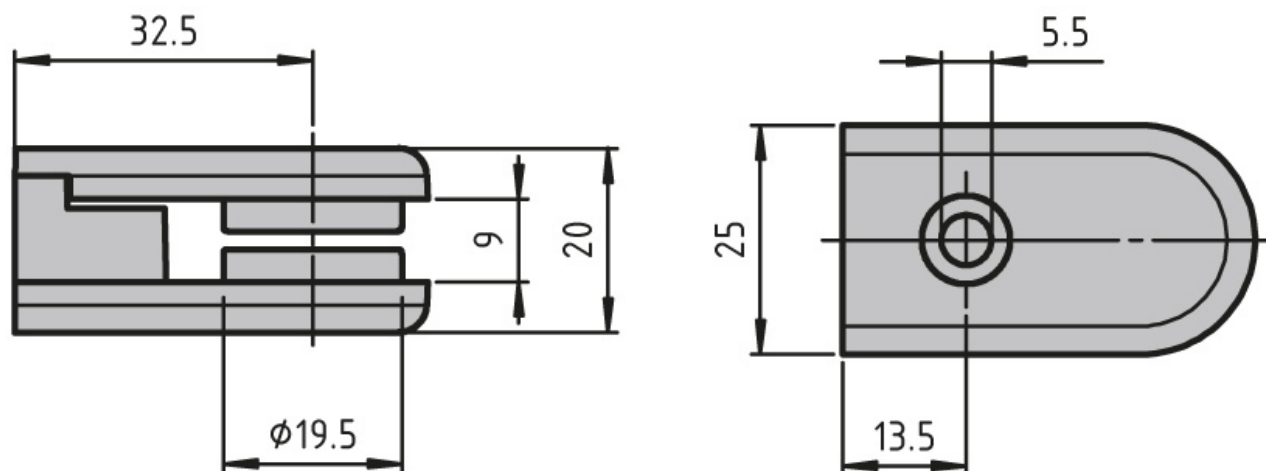
5 rubber pads for 2–9 mm plates

System: 40 - Slot 8; 30 - Slot 6; 20 - Slot 5

Type: Fixing Blocks/Fastening Elements



General Data



| Designation | Description |
|-------------|---------------|
| PZ5069 | Panel bracket |