

Table of contents

- **Wiring Duct Caps**
- **Wiring Duct 40 x 40**
- **Wiring Duct 40 x 80**
- **Wiring Duct 80 x 80**
- **Wiring Duct 80 x 120**
- **Wiring Duct 16 x 40**
- **Wiring Duct 30 x 30**
- **Wiring Duct 30 x 60**
- **Wiring Duct 60 x 60**
- **Wiring Duct Cover 30**
- **Wiring Duct Cover 60**
- **Turntable Sets**
- **Turntables**
- **Cable Joints**

Wiring Duct Caps

Application:
End caps for wiring ducts.

Supply:
2x / 4x sheet metal screw ST 4.2 x 9.5, DIN 7981

System: 40 - Slot 8; 30 - Slot 8



General Data

Designation	Description	Weight (g)	Compatible with
SZ0053S	Wiring Duct Cap 16 x 40	3	System 40 - Slot 8
SZ0050S	Wiring Duct Cap 40 x 40	8	System 40 - Slot 8
SZ0051S	Wiring Duct Cap 40 x 80	14	System 40 - Slot 8
SZ0052S	Wiring Duct Cap 80 x 80	30	System 40 - Slot 8
SZ0055S	Wiring Duct Cap 80 x 120	32	System 40 - Slot 8
SZ0047S	Wiring Duct Cap 30 x 30	-	Note! System 30 - Slot 8
SZ0048S	Wiring Duct Cap 30 x 60	-	Note! System 30 - Slot 8
SZ0049S	Wiring Duct Cap 60 x 60	-	Note! System 30 - Slot 8

Wiring Duct 40 x 40

Application:

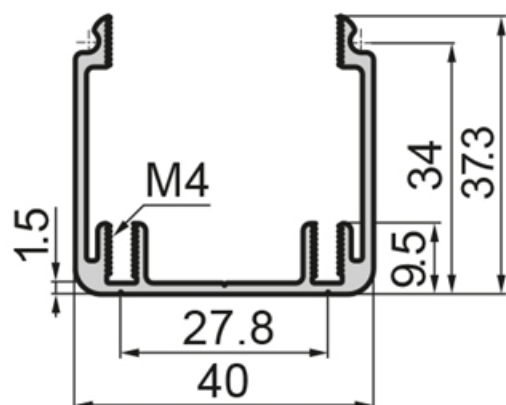
Comprises wiring duct 40 x 40 and wiring duct cover 40.

Acc.:

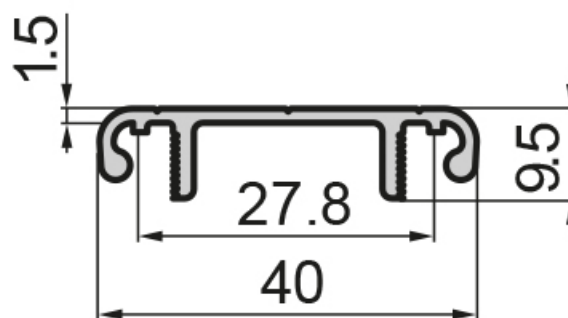
SZ0050S: wiring duct cap 40 x 40

System: 40 - Slot 8

Length (mm): 6000



SP1310N



SP1370N

General Data

Designation	Description	Ix (cm ⁴)	Iy (cm ⁴)	Wx (cm ³)	Wy (cm ³)
SP1310N	Wiring Duct 40x40	3.13	5.93	1.24	2.97
SP1370N	Wiring Duct Cover 40	0.08	2.01	0.12	1.01

Designation	A (cm ²)	Mass (kg/m)
SP1310N	2.28	0.62
SP1370N	1.17	0.32

Wiring Duct 40 x 80

Application:

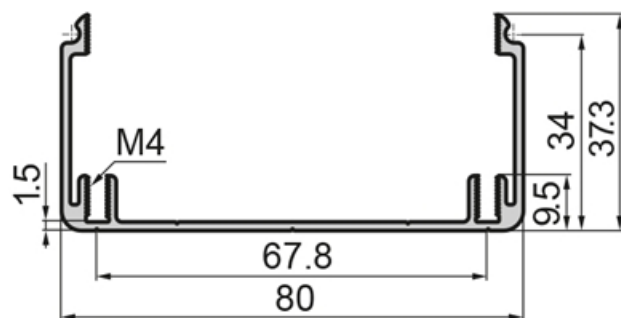
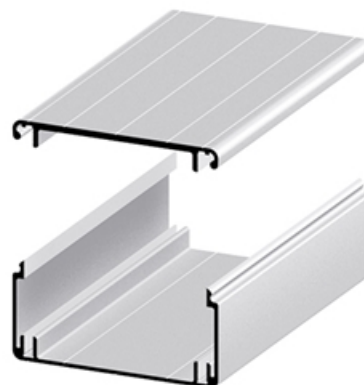
Comprises wiring duct 40 x 80 and wiring duct cover 80.

Acc.:

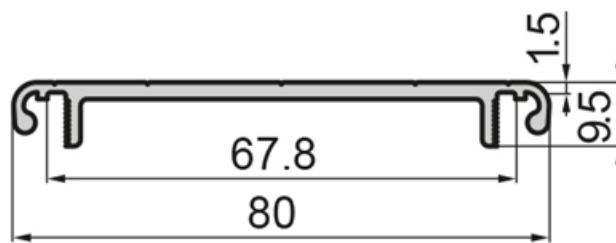
SZ0051S: wiring duct cap 40 x 80

System: 40 - Slot 8

Length (mm): 6000



SP1320N



SP1380N

General Data

Designation	Description	Ix (cm ⁴)	Iy (cm ⁴)	Wx (cm ³)	Wy (cm ³)
SP1320N	Wiring Duct 40x80	3.74	29.82	1.36	7.46

Designation	A (cm ²)	Mass (kg/m)
SP1320N	2.87	0.78

Wiring Duct 80 x 80

Application:

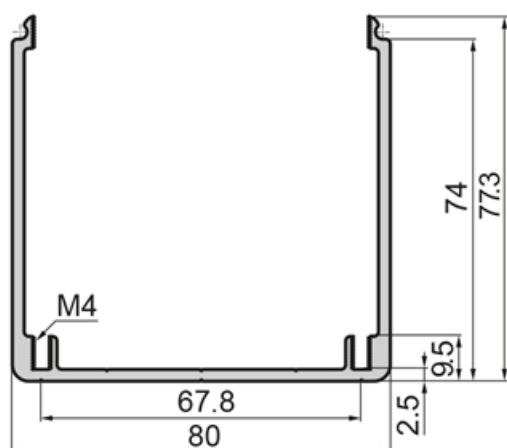
Comprises wiring duct 80 x 80 and wiring duct cover 80.

Acc.:

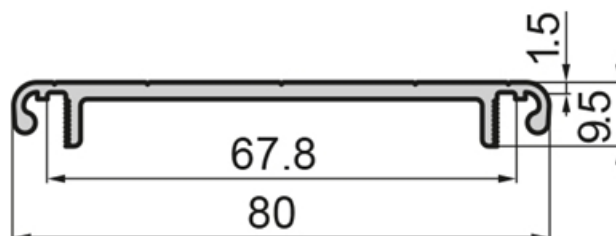
SZ0052S: wiring duct cap 80 x 80

System: 40 - Slot 8

Length (mm): 6000



SP1330N



SP1380N

General Data

Designation	Description	Ix (cm ⁴)	Iy (cm ⁴)	Wx (cm ³)	Wy (cm ³)
SP1330N	Wiring Duct 80x80	37.6	70.95	7.17	17.74
SP1380N	Wiring Duct Cover 80	0.1	14.91	0.14	3.73

Designation	A (cm ²)	Mass (kg/m)
SP1330N	6.14	1.66
SP1380N	2.37	0.64

Wiring Duct 80 x 120

Application:

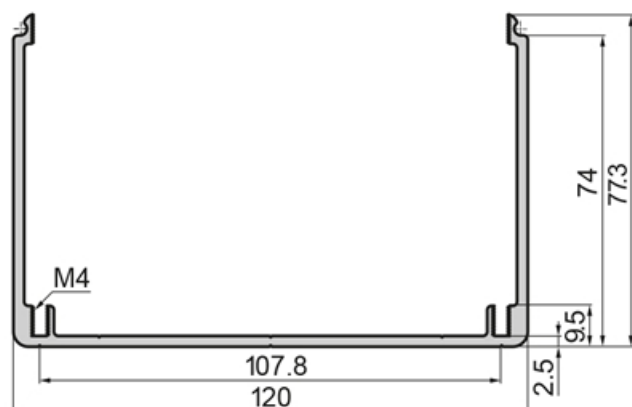
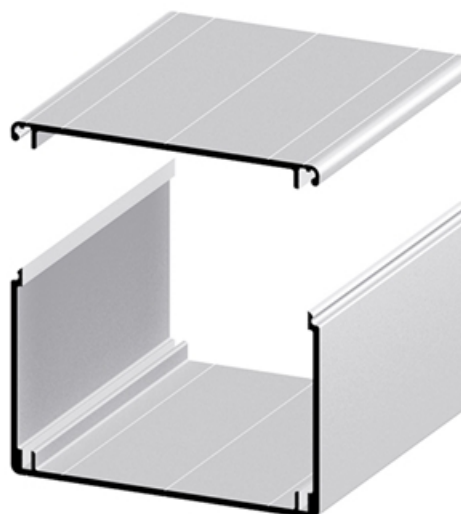
Comprises wiring duct 80 x 120 and wiring duct cover 120.

Acc.:

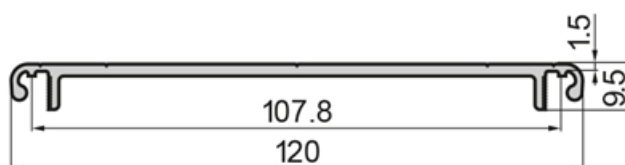
SZ0055S: wiring duct cap 80 x 120

System: 40 - Slot 8

Length (mm): 6000



SP1340N



SP1390N

General Data

Designation	Description	Ix (cm ⁴)	Iy (cm ⁴)	Wx (cm ³)	Wy (cm ³)
SP1340N	Wiring Duct 80x120	42.39	175.96	7.6	29.33
SP1390N	Wiring Duct Cover 120	0.11	46.7	0.15	7.78

Designation	A (cm ²)	Mass (kg/m)
SP1340N	7.14	1.93
SP1390N	3.37	0.91

Wiring Duct 16 x 40

Application:

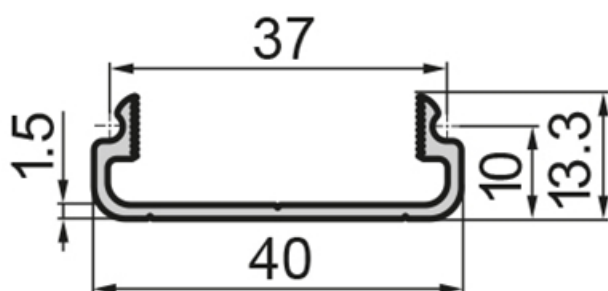
Comprises wiring duct 16 x 40 and wiring duct cover 40.

Acc.:

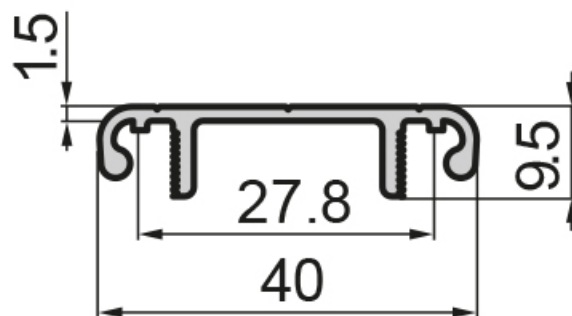
SZ0053S: wiring duct cap 16 x 40

System: 40 - Slot 8

Length (mm): 6000



SP1300N



SP1370N

General Data

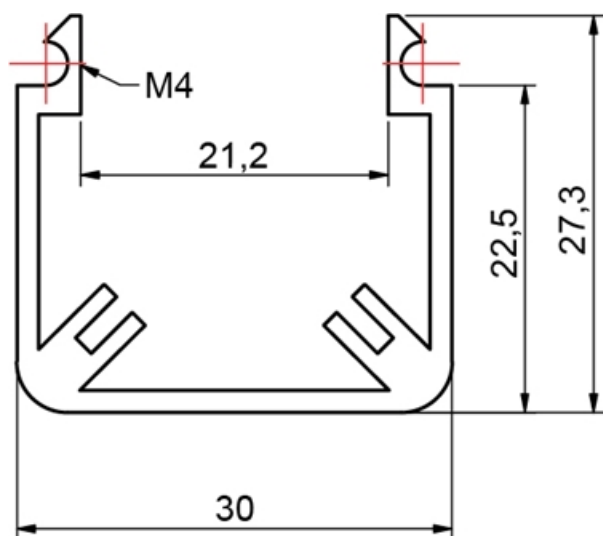
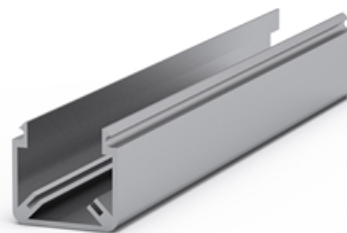
Designation	Description	Ix (cm ⁴)	Iy (cm ⁴)	Wx (cm ³)	Wy (cm ³)
SP1300N	Wiring Duct 16 x 40	0.15	2.18	0.16	1.09

Designation	A (cm ²)	Mass (kg/m)
SP1300N	1.04	0.28

Wiring Duct 30 x 30

System: 40 - Slot 8; 30 - Slot 8

Length (mm): 6000



General Data

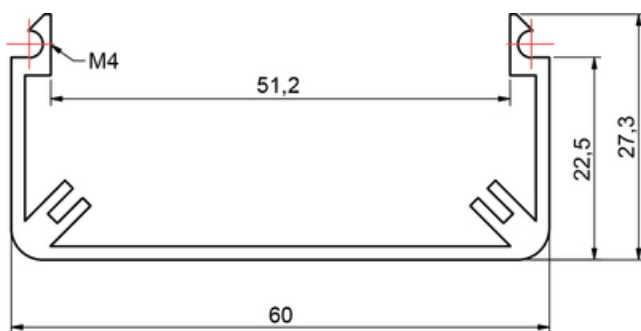
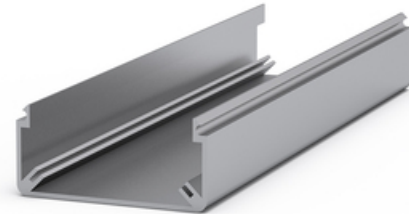
Designation	Ix (cm ⁴)	Iy (cm ⁴)	Wx (cm ³)	Wy (cm ³)	A (cm ²)
SP1250N	1.22	2.47	0.66	1.65	1.83

Designation	Mass (kg/m)
SP1250N	0.49

Wiring Duct 30 x 60

System: 40 - Slot 8; 30 - Slot 8

Length (mm): 6000



General Data

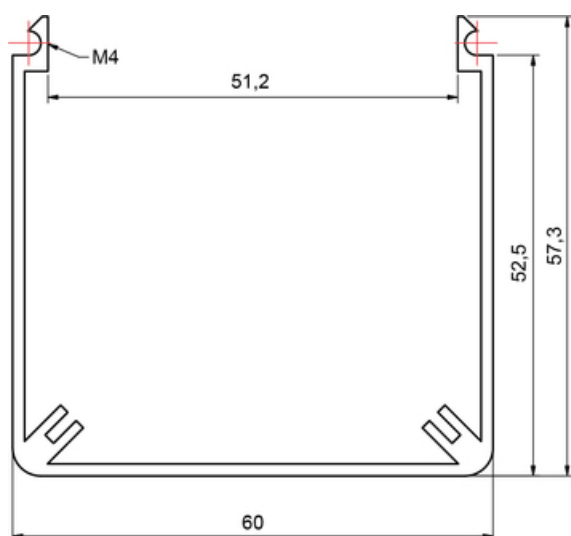
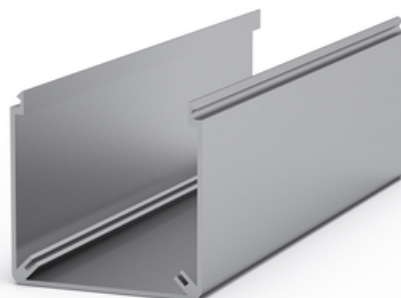
Designation	I _x (cm ⁴)	I _y (cm ⁴)	W _x (cm ³)	W _y (cm ³)	A (cm ²)
SP1260N	1.46	13.02	0.73	4.34	2.28

Designation	Mass (kg/m)
SP1260N	0.61

Wiring Duct 60 x 60

System: 40 - Slot 8; 30 - Slot 8

Length (mm): 6000



General Data

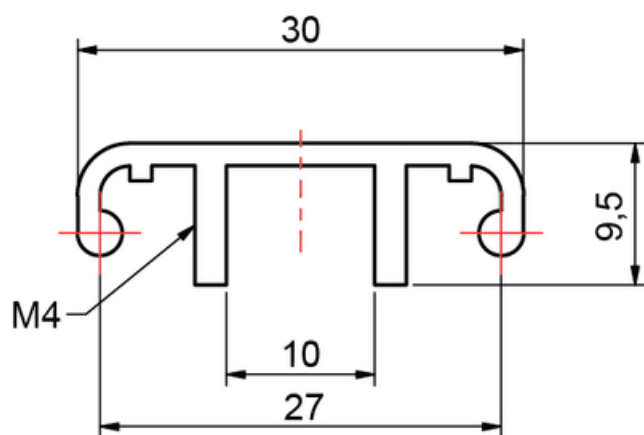
Designation	Ix (cm ⁴)	Iy (cm ⁴)	Wx (cm ³)	Wy (cm ³)	A (cm ²)
SP1270N	11.28	20.73	2.89	6.91	3.18

Designation	Mass (kg/m)
SP1270N	0.86

Wiring Duct Cover 30

System: 40 - Slot 8; 30 - Slot 8

Length (mm): 6000



General Data

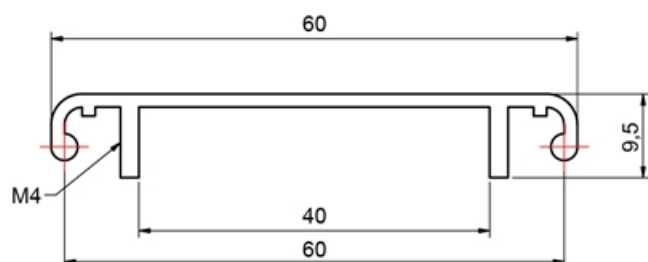
Designation	Ix (cm ⁴)	Iy (cm ⁴)	Wx (cm ³)	Wy (cm ³)	A (cm ²)
SP1280N	0.07	0.89	0.11	0.59	1.02

Designation	Mass (kg/m)
SP1280N	0.28

Wiring Duct Cover 60

System: 40 - Slot 8; 30 - Slot 8

Length (mm): 6000



General Data

Designation	Ix (cm ⁴)	Iy (cm ⁴)	Wx (cm ³)	Wy (cm ³)	A (cm ²)
SP1290N	0.09	6.11	0.13	2.04	1.47

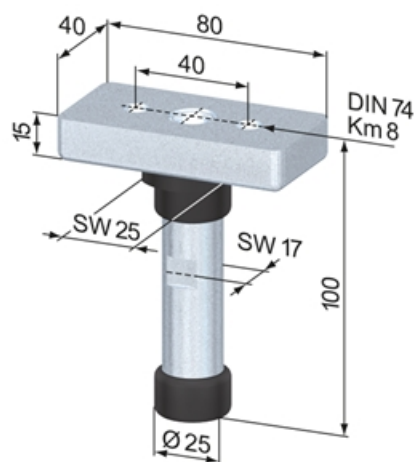
Designation	Mass (kg/m)
SP1290N	0.4

Turntable Sets

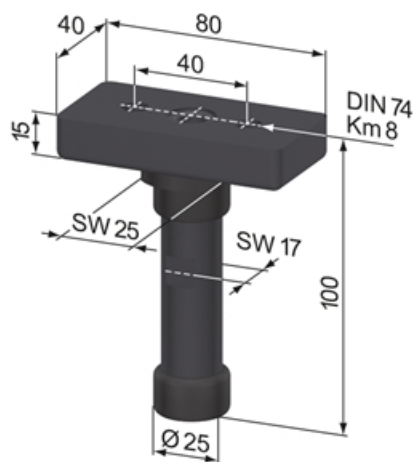
Application:

The turntable set forms an ideal unit for creating swivel arms for monitors, control desks, etc. The turntable set 80 is installed in a section of profile 80 x 80 round, 120 mm long, and is supplied complete.

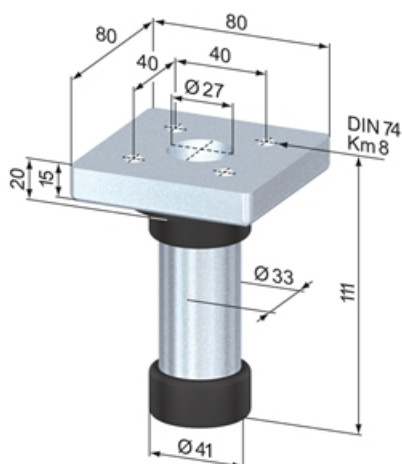
System: 40 - Slot 8



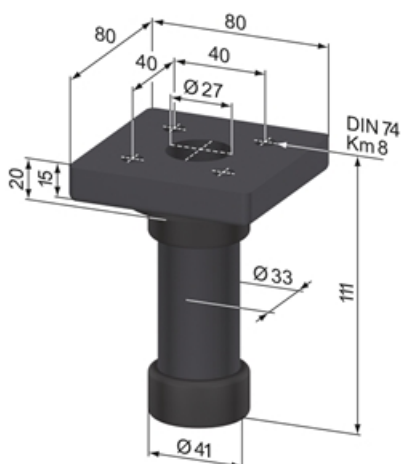
SA5220N



SA5220S

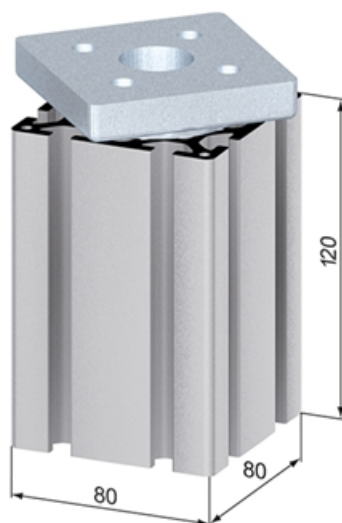


SA5210N



SA5210S

Turntable Sets



General Data

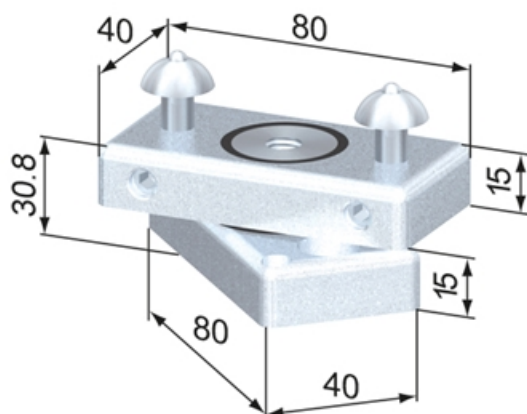
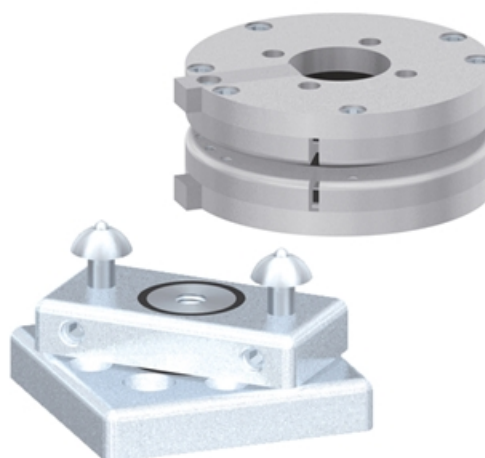
Designation	Description	Material	Weight (g)
SA5220N	Turntable Set 40, natural	Steel, zinc-plated; POM, black	474
SA5220S	Turntable Set 40, black	Steel, zinc-plated black; POM, black	474
SA5210N	Turntable Set 80, natural	Steel, zinc-plated; POM, black	800
SA5210S	Turntable Set 80, black	Steel, zinc-plated black; POM, black	800

Turntables

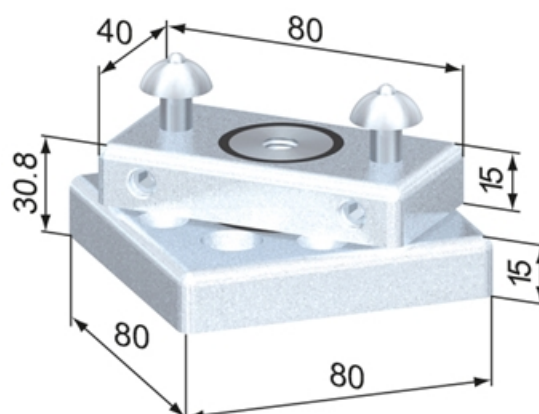
Application:

The turntables are used to construct moving swivel arms.
The turntable 80 allows for cable runs in the open profiles to enter the turntable through the core hole.

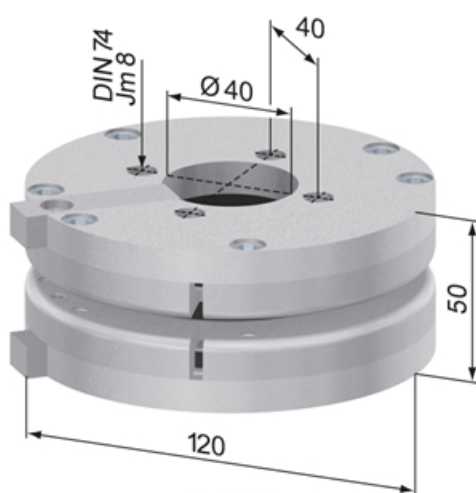
System: 40 - Slot 8



SA5225N



SA5215N



SA5250N



General Data

Designation	Description	Material	Weight (kg)
SA5225N	Turntable 40	Steel, zinc-plated	1.03
SA5215N	Turntable 80	Steel, zinc-plated	1.03
SA5250N	Turntable 80, open	Aluminium, natural anodized; Glide bearing: plastic	0.99

Cable Joints

Application:

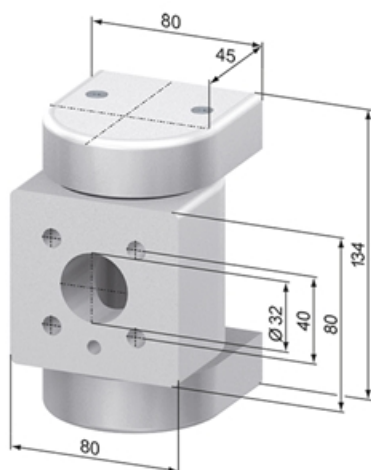
Together with the cable arm, the cable joint forms an ideal unit for running electrical data or control cables from switch box/control cabinets to the control desk. The cable runs entirely in the profile, providing the best possible protection to the cables.

SZ1720V includes:

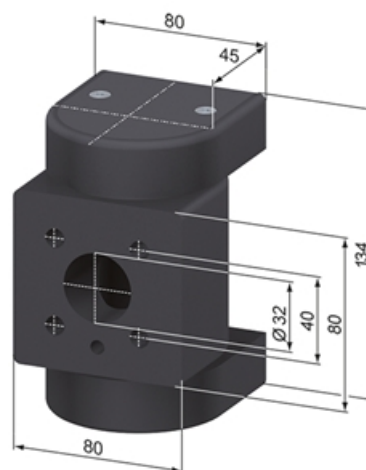
4x cap head screw M 8 x 70, DIN 912

4x central fastener 40 EQ

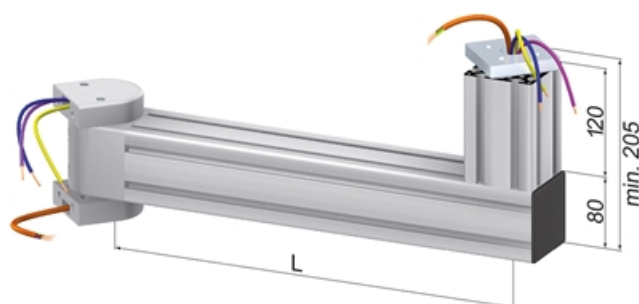
System: 40 - Slot 8



SA5200N



SA5200S



General Data

Designation	Description	Material	Weight (kg)
SA5200N	Cable Joint 80, natural	Aluminium, natural anodized	1.87
SA5200S	Cable Joint 80, black	Aluminium, black anodized	1.87
SZ1720V	Fixing Set For Cable Joints	-	-