

Adjustable Feet Ø 79 with anti-vibration pad

Application:

Height adjustable foot for leveling machines and structures.

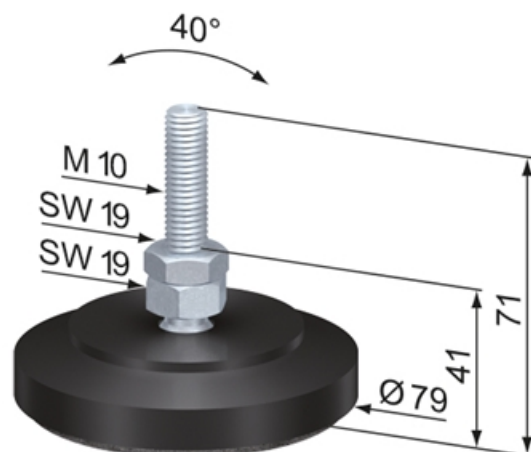
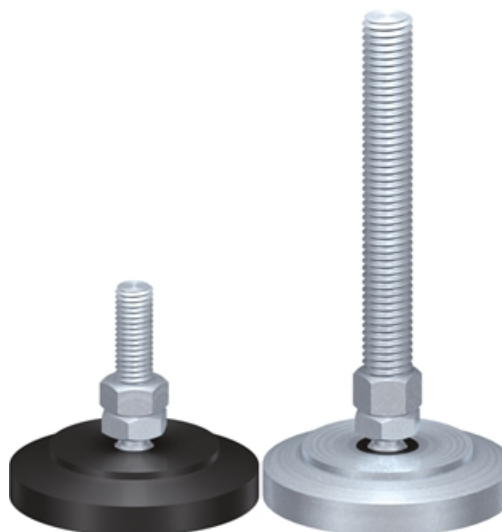
Any tipping is compensated by a ball and striker pad.

Material: Spindle & Hexagon nut: Steel, zinc-plated

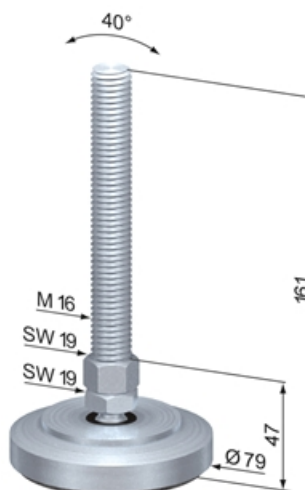
Max. Load (kg): 750

System: 40 - Slot 8; 30 - Slot 6; 20 - Slot 5

Type: Feet



SF0447S



SF0481V

General Data

Designation	Description	Pad Material	Hmin (mm)	Weight (g)
SF0443S	Adjustable Foot Ø 79 M8 PSD / L 71	"POM, black; with anti- vibration pad"	41	153
SF0447S	Adjustable Foot Ø 79 M10 PSD / L 71	"POM, black; with anti- vibration pad"	41	162
SF0449S	Adjustable Foot Ø 79 M12 PSD / L 71	"POM, black; with anti- vibration pad"	46	179
SF0481V	Adjustable Foot Ø 79 M16 SVD / L 161	"Steel, zinc-plated; with anti-vibration pad"	47	692