

Fixing Angles 70 x 70

Application:

For right-angled fixing of profiles without the need of machining the profiles. Comes with required fixing set.

Supply:

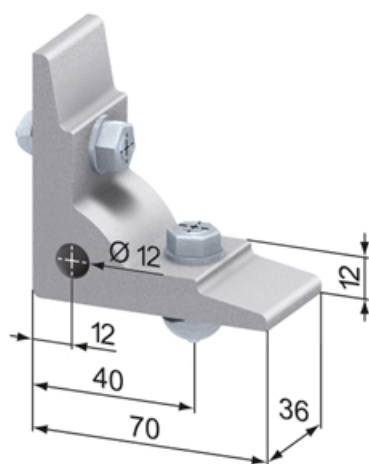
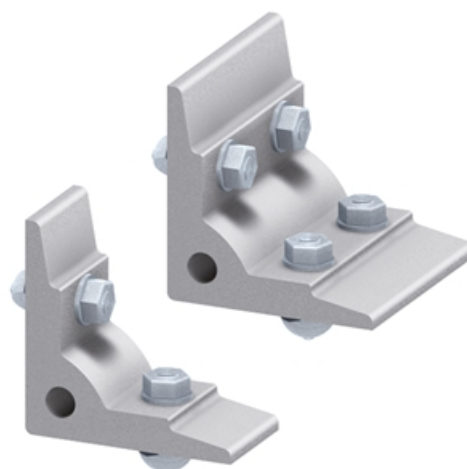
SZ0941N: 4x anchor screw (M8 x 32)

SZ0940N: 2x anchor screw (M8 x 32), 2x anti-twist set screw

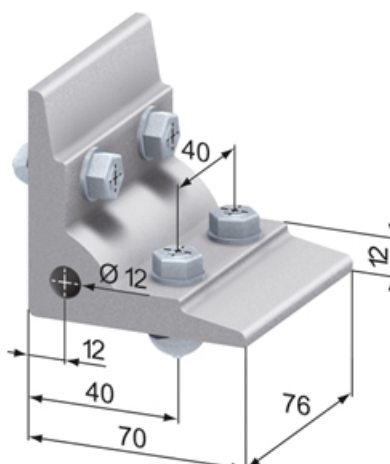
Material: Aluminium, natural anodized

System: 40 - Slot 8

Type: Angles Brackets and Corners; Fasteners



SZ0940N



SZ0941N

General Data

Designation	Description	System	Weight (g)
SZ0940N	Fixing Angle 70 x 70 x 36	40 - Slot 8	166
SZ0941N	Fixing Angle 70 x 70 x 76	40 - Slot 8	344