

Corner Fasteners

Application:

For right-angled fixing of profiles.

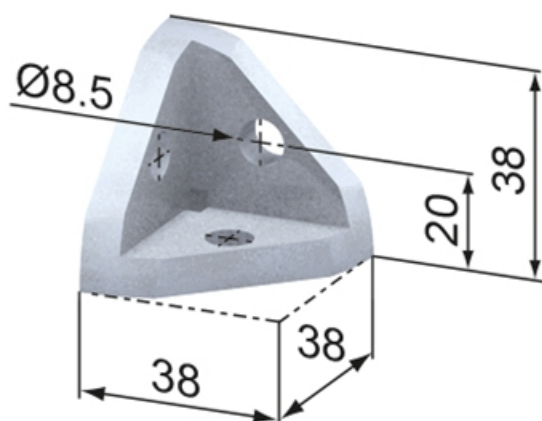
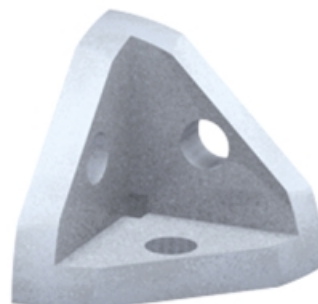
Supply:

Corner fastener sets contain the corner fastener 40 x 40 45°, three button head screws M 8 x 20, ISO 7380, and the appropriate cap.

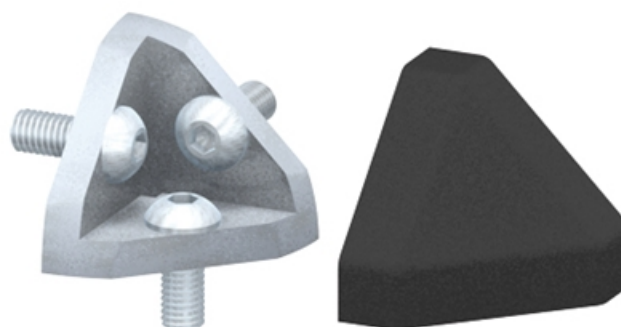
Material: GDZn (zinc diecasting), natural & PA 6, black

System: 40 - Slot 8

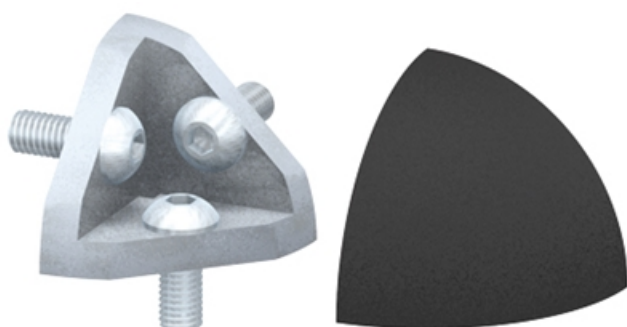
Type: Angles Brackets and Corners; Fasteners



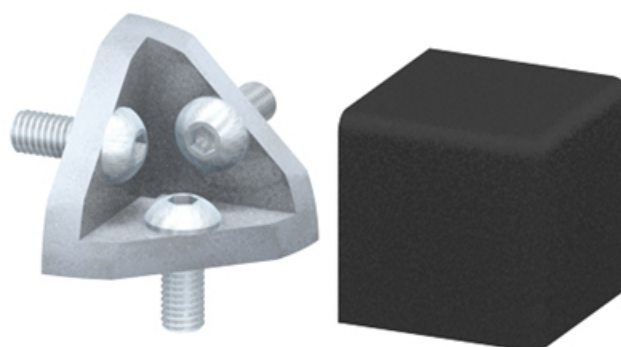
SZ0931S



SZ0930S



SZ0932S



SZ0933S

General Data

Designation	Description	System	Weight (g)
SZ0931S	Corner Fastener 40 x 40 45°	40 - Slot 8	89
SZ0930S	Corner Fastener Set 40 x 40 45°	40 - Slot 8	127
SZ0932S	Corner Fastener Set 40 x 40, round	40 - Slot 8	127
SZ0933S	Corner Fastener Set 40 x 40, edge	40 - Slot 8	135