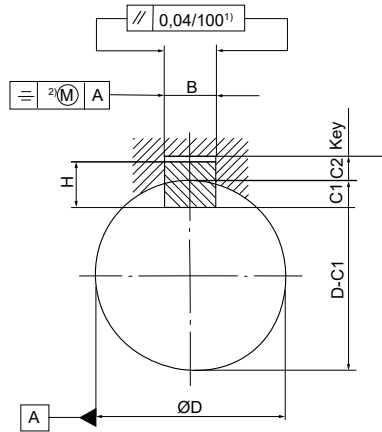
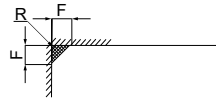


# STANDARD TOLERANCES KEYWAYS FOR FLAT KEYS IN CYLINDRICAL SHAFTS AND HUBS



Key in shaft and hub



The key may be rounded or straight within the marked area

<sup>1</sup> Reversible tolerance requirement (applies in both directions). For surfaces less than 100 mm, the tolerance is reduced by 0,04 mm in direct proportion to the actual extension, but not to less than 0,02 mm.  
<sup>2</sup> Tolerance value = four times the tolerance range of B.

D	Base dimension	Width of keyway Tolerances				Depth of track				R min	F max
		Normal keyways <sup>3</sup>		Narrow keyways <sup>3</sup>		Base dimension		Boundary dimension			
		Shaft N9 Limit dimension		Shaft and hub P9 Limit dimension		C <sub>1</sub>	C <sub>2</sub>	Top	Bottom		
		Top	Bottom	Top	Bottom						
(6) - 8	2	-0,004	-0,029	-0,006	-0,031	1,2	1	+0,1	0	0,08	0,16
(8) - 10	3	-0,004	-0,029	-0,006	-0,031	1,8	1,4	+0,1	0	0,08	0,16
(10) - 12	4	0	-0,030	-0,012	-0,042	2,5	1,8	+0,1	0	0,08	0,16
(12) - 17	5	0	-0,030	-0,012	-0,042	3	2,3	+0,1	0	0,16	0,25
(17) - 22	6	0	-0,030	-0,012	-0,042	3,5	2,8	+0,1	0	0,16	0,25
(22) - 30	8	0	-0,036	-0,015	-0,051	4	3,3	+0,2	0	0,16	0,25
(30) - 38	10	0	-0,036	-0,015	-0,051	5	3,3	+0,2	0	0,25	0,4
(38) - 44	12	0	-0,043	-0,018	-0,061	5	3,3	+0,2	0	0,25	0,4
(44) - 50	14	0	-0,043	-0,018	-0,061	5,5	3,8	+0,2	0	0,25	0,4
(50) - 58	16	0	-0,043	-0,018	-0,061	6	4,3	+0,2	0	0,25	0,4
(58) - 65	18	0	-0,043	-0,018	-0,061	7	4,4	+0,2	0	0,25	0,4

<sup>3</sup> Here, keyways according to SMS 2306 and 2307 with keyway width tolerance h9 are assumed. If a grip fit is required, the keyway width tolerance for narrow wedges should be reduced, e.g. to h7.