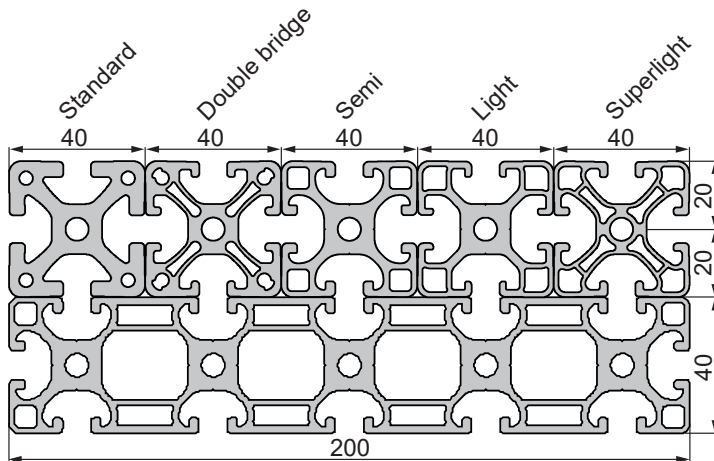


Profile Ranges

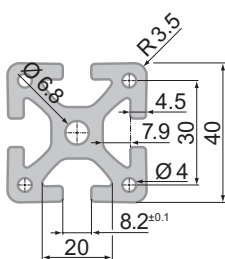
System 40

The System 40 profile is the most frequently used profile range. The name indicates a distance of 40 mm grooves. The range includes different versions from Standard to Superlight. All profiles in the System 40 range are interchangeable.

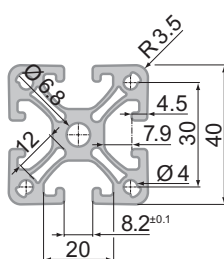
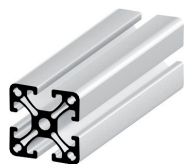


- T-slot 8
- Center hole for M8

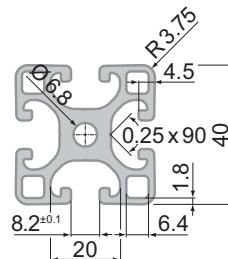
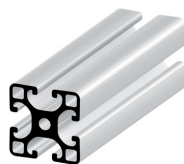
Standard



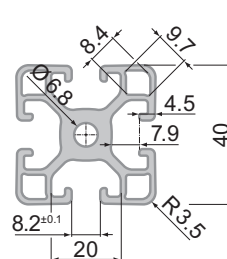
Double bridge



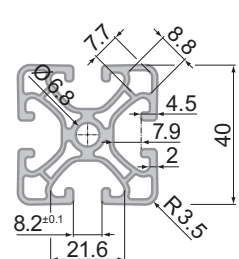
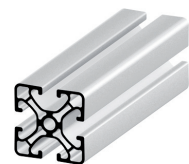
Semi



Light



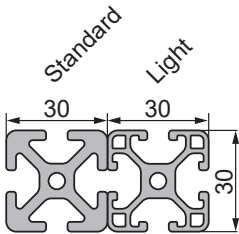
Superlight





System 6

The System 6 profile is designed for any kind of construction with optimised weight. The range includes two versions, Standard and Light.

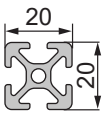


- T-slot 6
- Center hole for M6



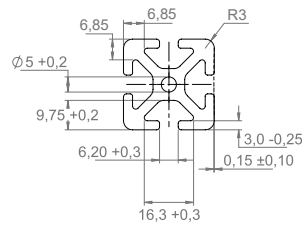
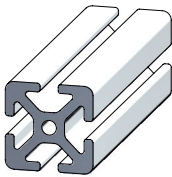
System 5

The System 5 profile has small outer dimensions which particularly fit compact equipment with minor design space requirements, covers and handling mechanisms.

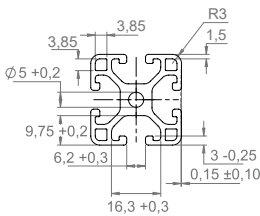
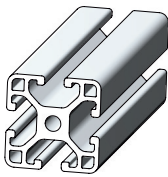


- T-slot 5
- Center hole for M5

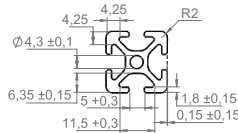
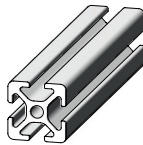
System 6, Normal



System 6, Light



System 5



I_x (cm ⁴) I_y (cm ⁴)	Moment of inertia	
W_x (cm ³) W_y (cm ³)	Resistive moment	
A (cm ²)	Profile surface	